

Apparo Fast Edit

Connecting to MS SQL Server



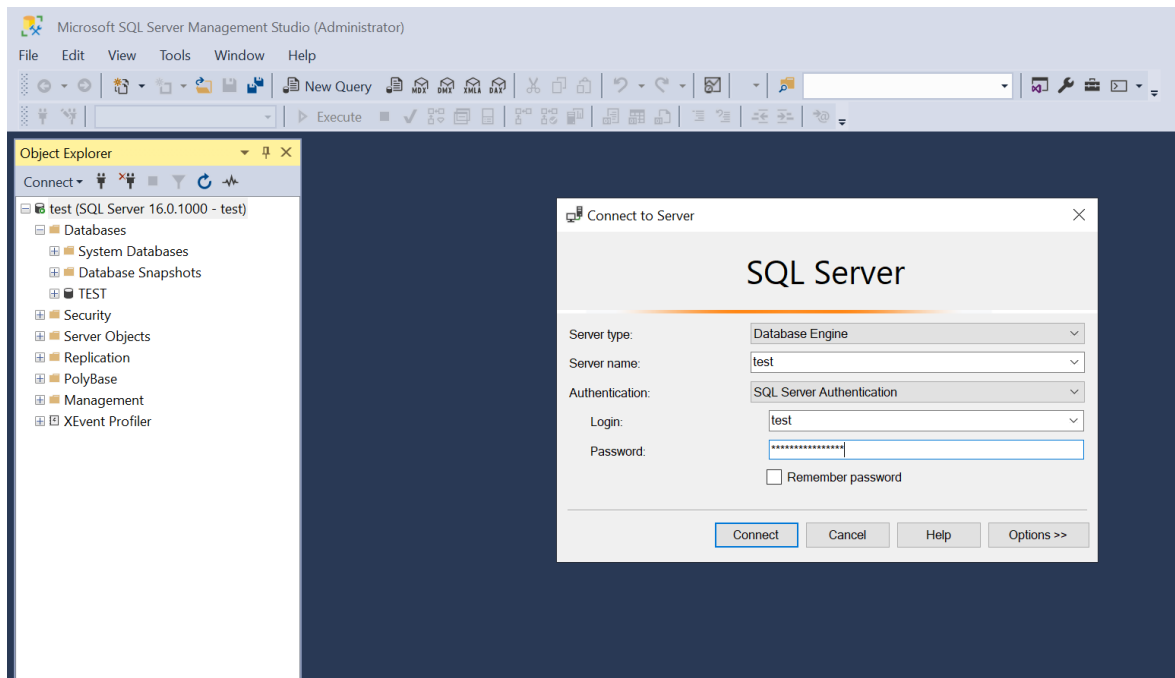
1	Situation	3
1.1	Open SQL Server Management Studio	3
1.2	Open the SQL Server Configuration Manager	4
1.3	Check if port 1433 is used	5
1.4	Checking Network protocols	7

1 Situation

Apparo is using JDBC to connect to a MS SQL Server.

It can happen that it is not possible to open a database connection from Apparo because some settings of the MS SQL server network must be changed first.

1.1 Open SQL Server Management Studio

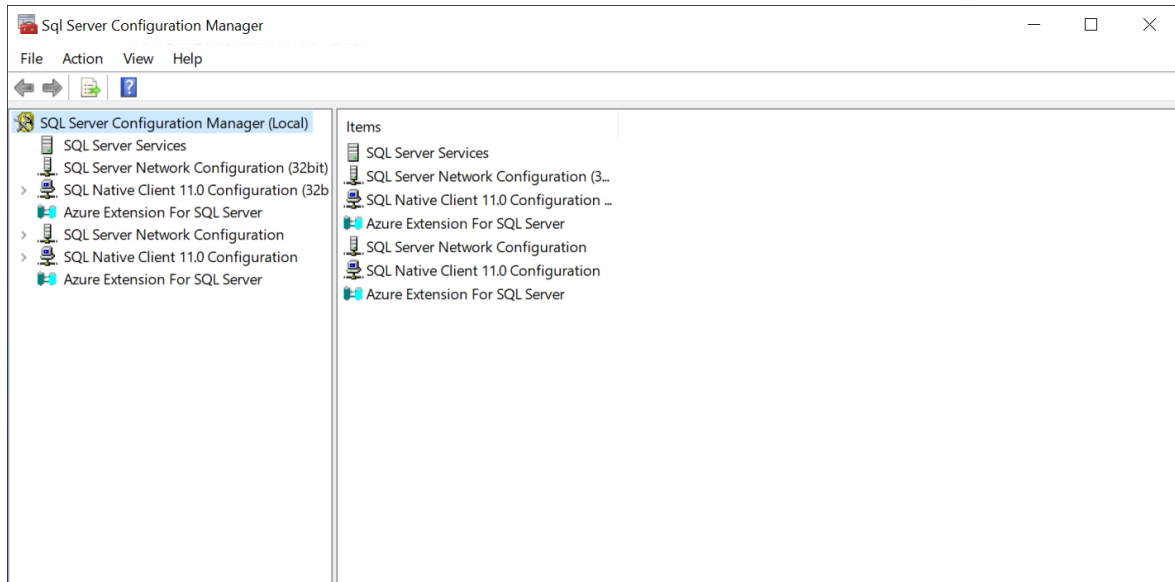


Try to login into your database instance. If this is not working then the problem is a configuration issue of the database instance or login and must be fixed using the SQL Server Management Studio.

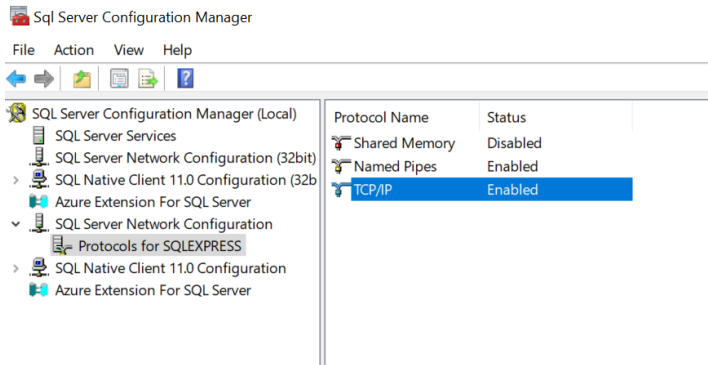
1.2 Open the SQL Server Configuration Manager

You can find this program on the SQL Server machine.

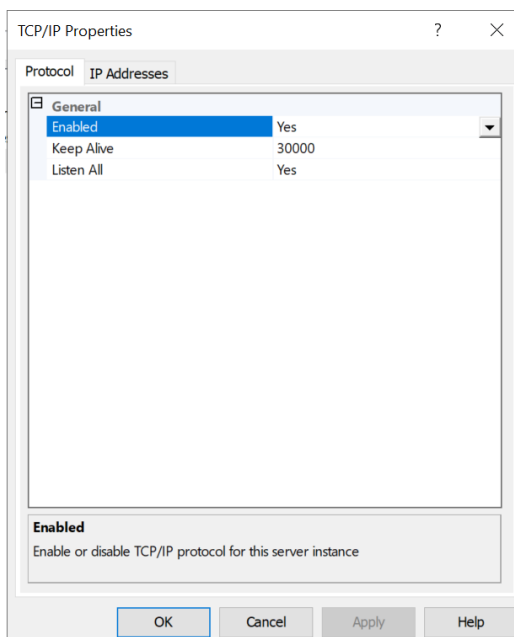
Select “SQL Server Network Configuration and open it.



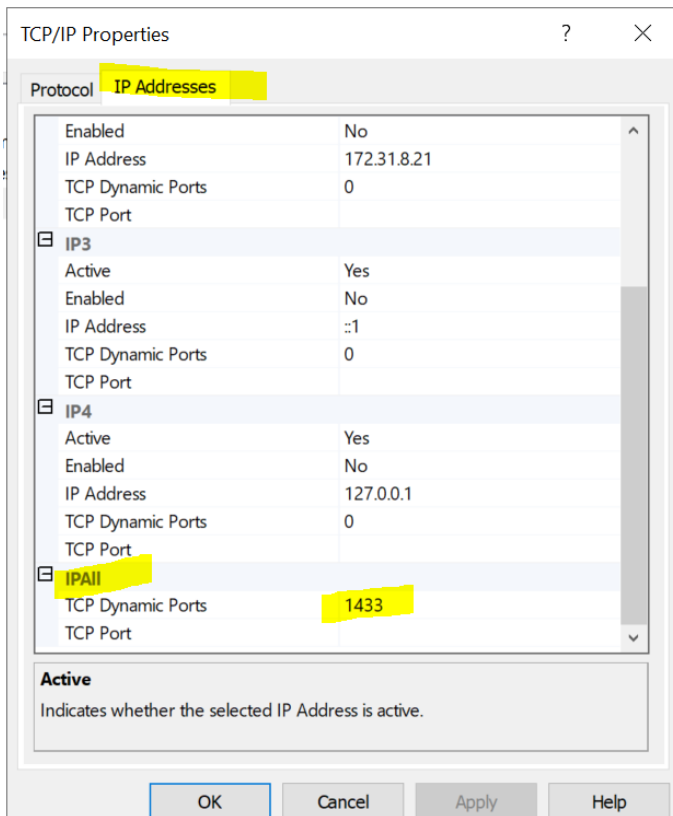
1.3 Check if port 1433 is used



Select properties of TCP/IP:

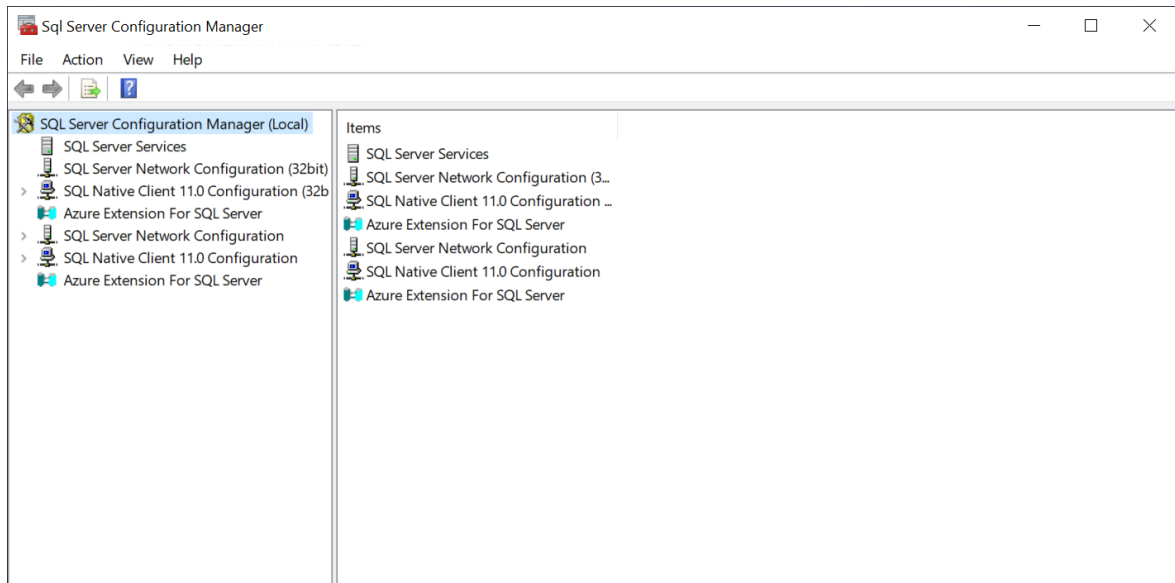


Select tab "IP Addresses"

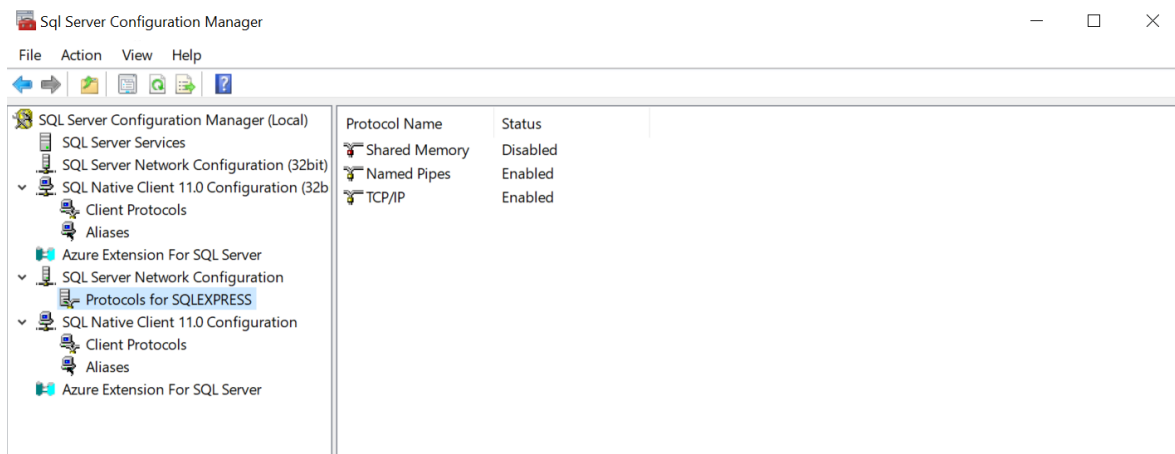


The TCP Dynamic Ports value must be 1433.
If not then change it to 1433 and, Apply and restart the whole machine.

1.4 Checking Network protocols



Check if TCP/IP and Names Pipes are enabled.



If not then enable the protocol and after that restart the whole machine.