

Apparo Fast Edit

Database configuration
for the Apparo repository
and others



Table of content

1	<i>Prior to Installation</i>	3
2	<i>Using Oracle for repository</i>	4
2.1	Creating a new user	4
2.2	Granting the rights to the user	5
3	<i>Using Microsoft SQL Server for repository</i>	6
3.1	Creating a new Database	7
3.2	Creating a new Login	8
3.3	User Mapping	9
4	<i>Using IBM DB/2 for repository</i>	11
4.1	Creating a new user	11
4.2	Granting the rights to the user	12
4.3	Creating table spaces	13
5	<i>Automated repository handling</i>	18
6	<i>Special requirements for Informix databases</i>	19
7	<i>Support</i>	20

1 Prior to Installation

Apparo Fast Edit is storing all of your definitions into a **database repository**.

If you want to install

- a **test or development environment** that doesn't need high performance
- and this system is not a **cluster environment**

then you can use the "internal database" setting too (that is the default choice).

When using this internal database then no database configuration is necessary and you can close this document now.

A database repository is a group of database tables that must be stored into an own database schema using an new database user. The creation of the database tables will be done by installation time but not the creation of the database user.

Therefore it is necessary to define manually a new database user login. This document is explaining for each supported database type the steps.

Before you can start the installation of Apparo Fast Edit you must configure the database for the repository first.

Apparo Fast Edit can use following databases for the repository:

- **Oracle 11g and newer**
- **MS SQL Server 2012 and newer**
- **IBM DB2 9.5 and newer**
- **Internal database for testing (no configuration is necessary)**

If you are not familiar with the configuration then this document is helping you.

Please be sure that your database is able to store all characters of your language perfectly. That means normally a UTF character set is the best solution.

2 Using Oracle for repository

Following steps are necessary:

- Creating a new database user
- Granting the rights to this user

Open SQLPLUS and connect to the database instance for the new repository.

With this connect it must be possible to create a new database user:

Example:

sqlplus "sys/oracle@orcl as sysdba (in your environment the account is different)

2.1 Creating a new user

CREATE USER AFE IDENTIFIED BY AFE;

Hint: The user **SYS** is not adequate to store the repository in its own schema.

You can use a freely definable user name.

2.2 Granting the rights to the user

Now grant the necessary rights to this new user:

```
GRANT CONNECT TO afe;  
GRANT RESOURCE TO afe;  
GRANT UNLIMITED TABLESPACE TO afe;
```

Now you have a database user with the name “AFE” and the password “AFE”.

Hint: Character case is very important in the Configuration Manager.

The database preparation is now complete.

Now it's time to start the installation of Apparo Fast Edit.

Please open the “**Installation**” document.

3 Using Microsoft SQL Server for repository

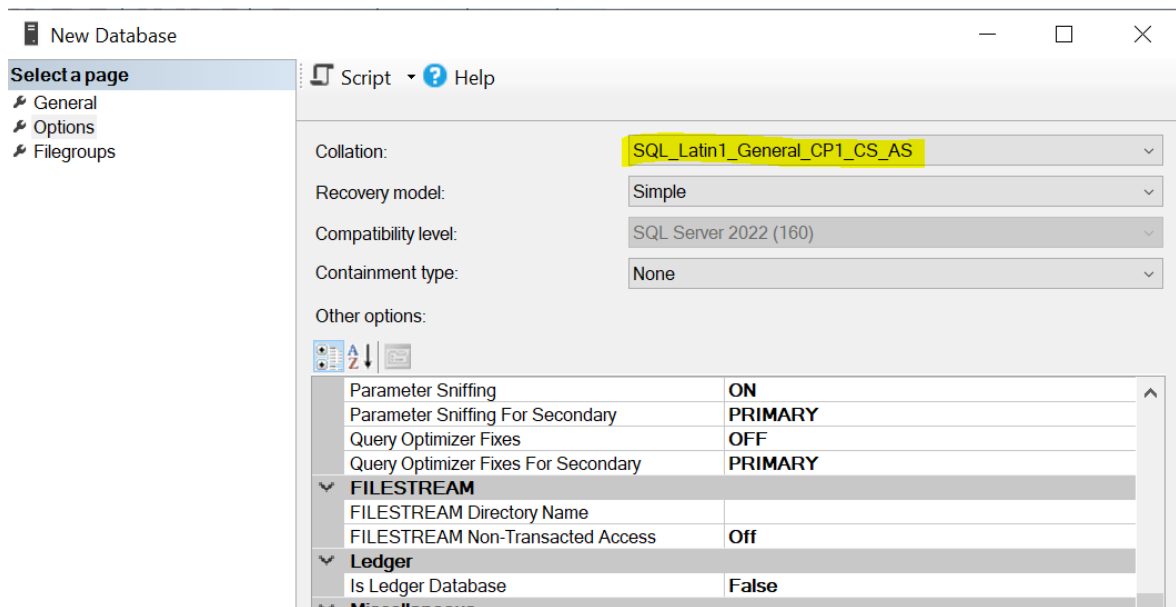
Following steps are necessary:

- Optional: creating a new Database for Apparo repository
- Creating a new login, user and (optional) a new schema
- Optional: Granting the schema to this user

The database must use SQL authentication and TCP/IP for communication.

Please open the Microsoft SQL Server Management Studio now.

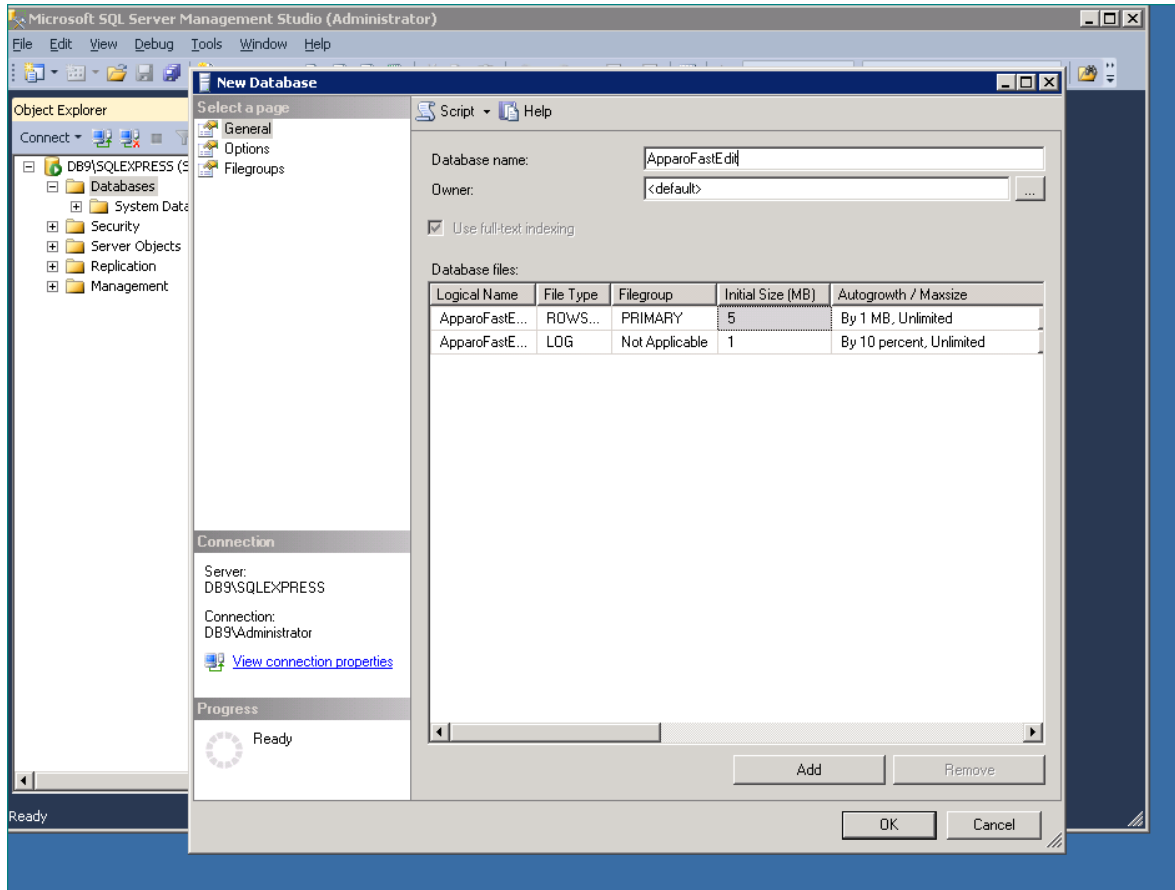
Please check that your **collation is not using UTF character set**.
UTF is not supported.



3.1 Creating a new Database

In this example the database has the name “ApparoFastEdit”.

Right-click on Databases and select ,New database’



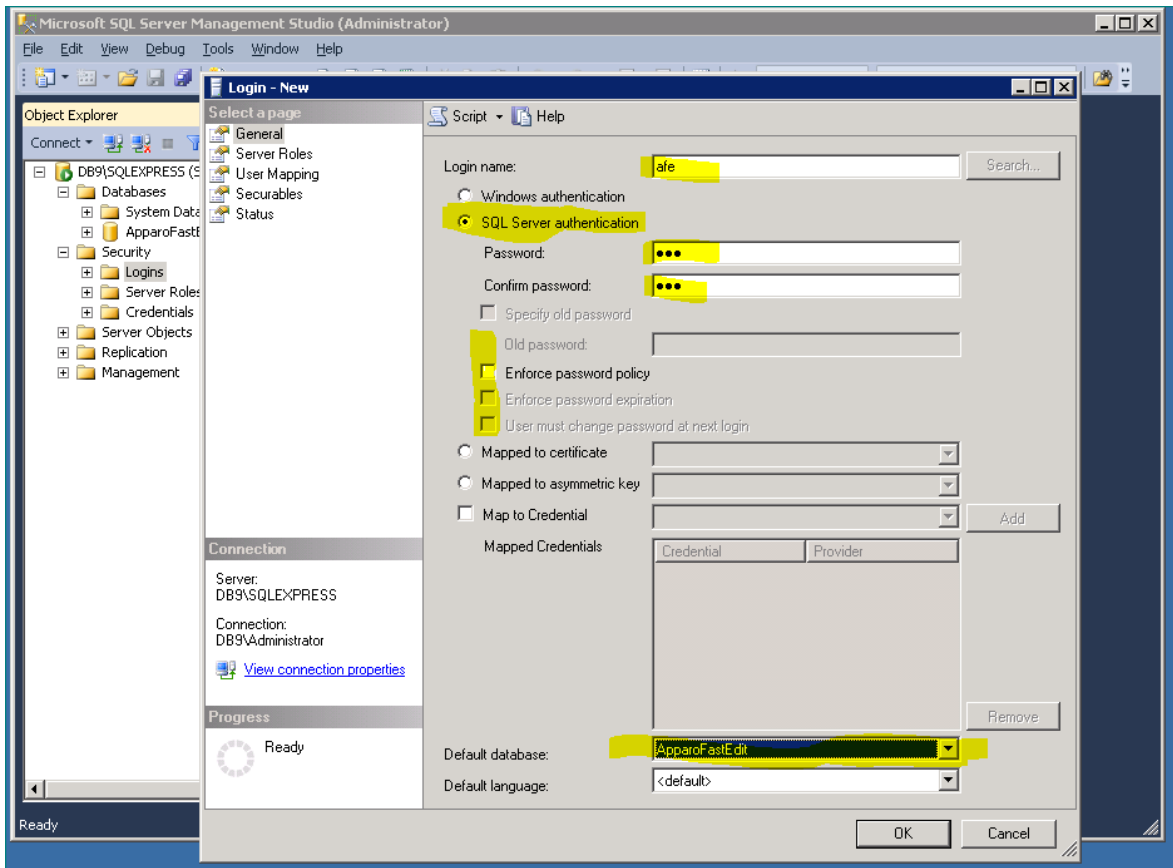
Insert the name and click ,OK’

3.2 Creating a new Login

In this example the new Login has the name „afe“.

You can use a freely definable login name.

Create a new login with right-click

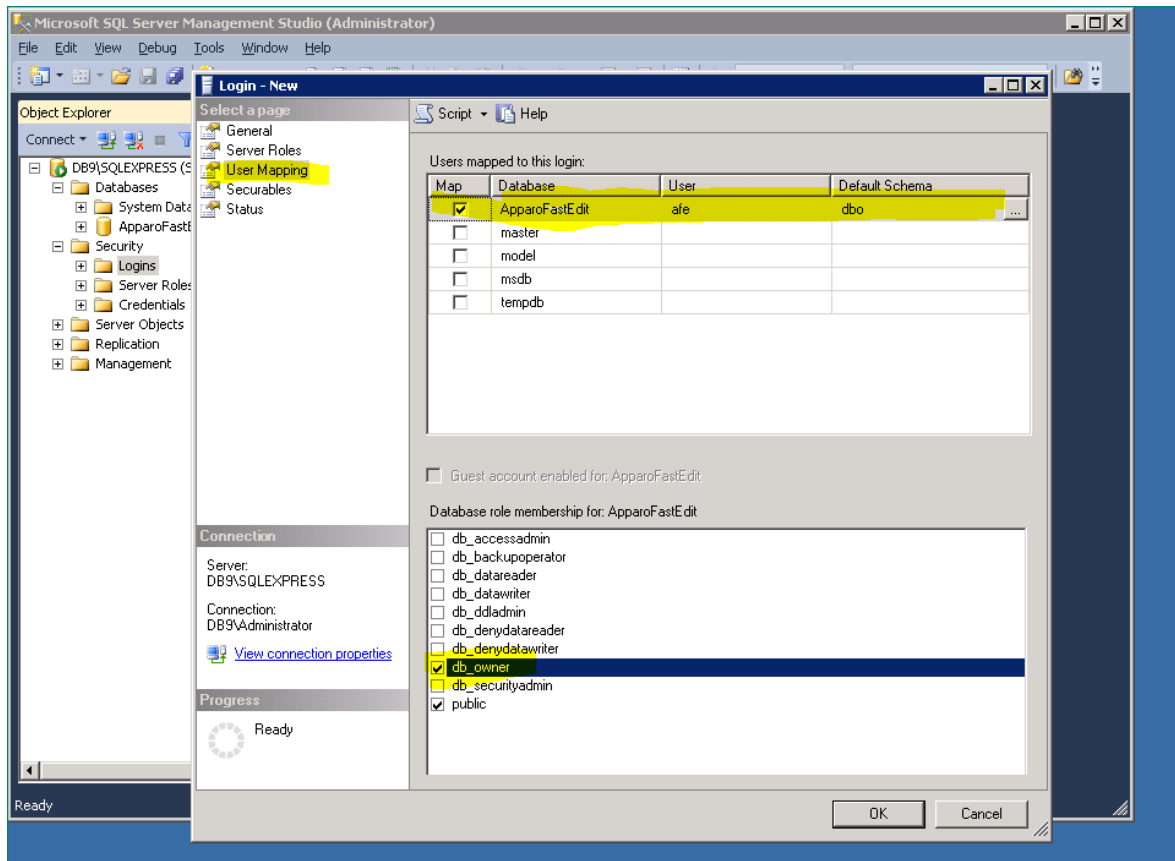


Insert the necessary information here.

3.3 User Mapping

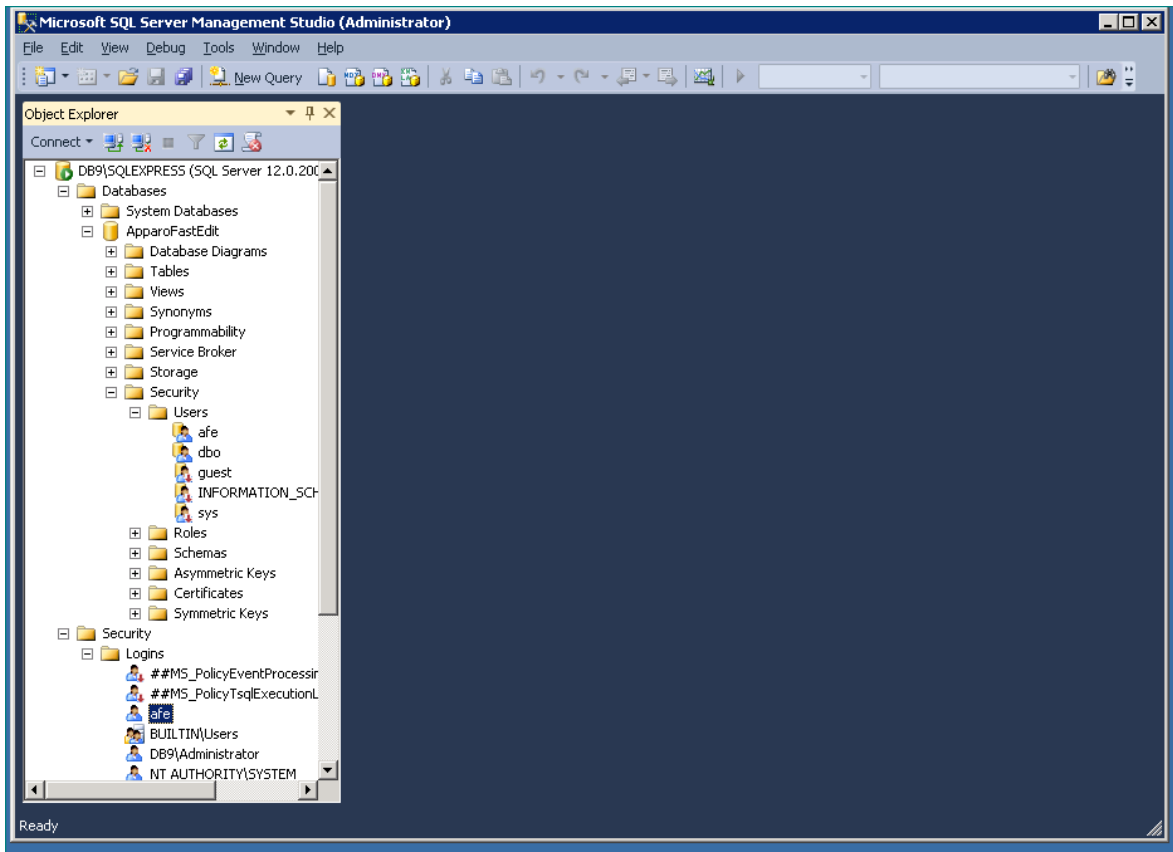
In this example the new user has the name „afe“ and is mapped to default schema dbo.

You can use a freely definable user name.



Role membership:

- db_owner

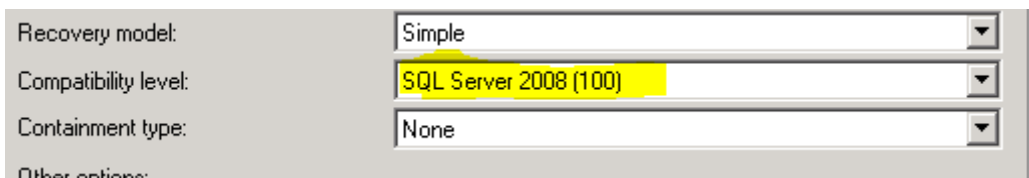


The database preparation is now complete.

Now you have a database user with the name “afe” and the password “afe”.

Performance tuning for MS SQL Server 2012 and MS SQL Server 2014:

You can improve the performance if you set the “Compatibility level” to “SQL Server 2008”:



Now it's time to start the installation of Apparo Fast Edit.

Please open the “**Installation**” document.

4 Using IBM DB/2 for repository

Following steps are necessary:

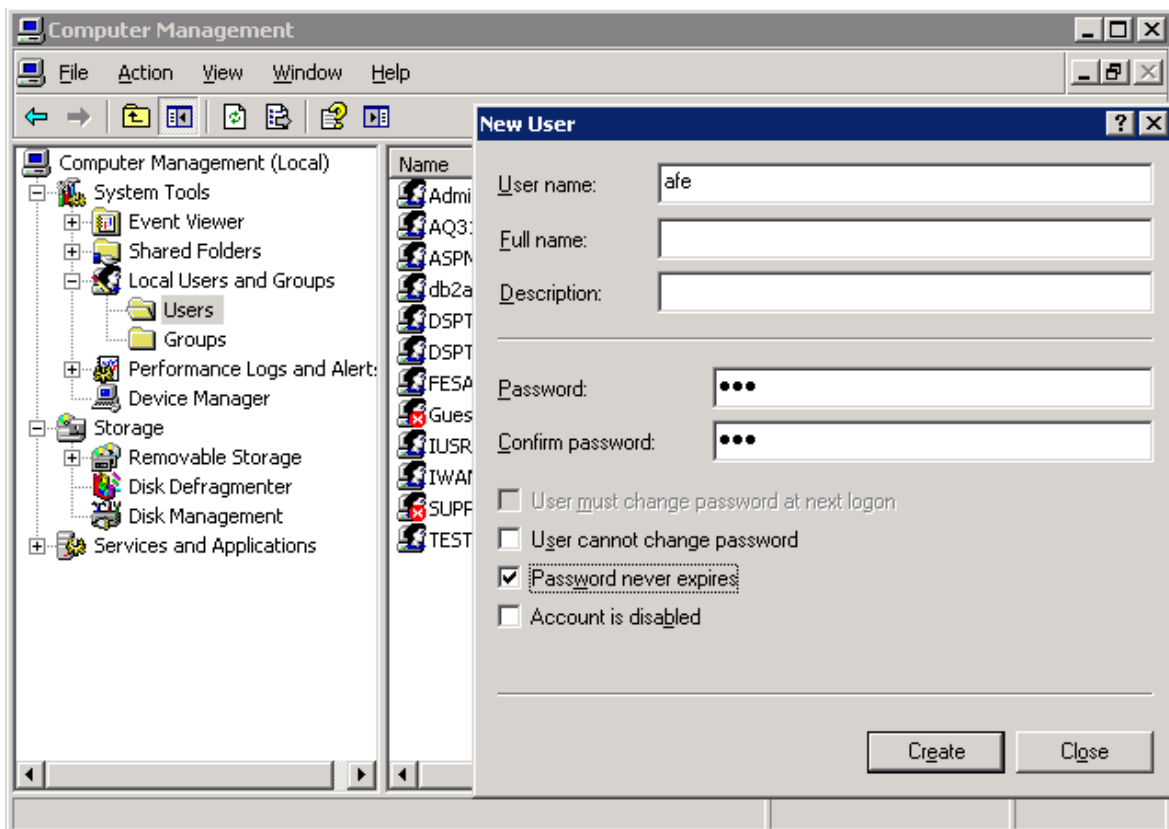
- Creating a new database user
- Granting the rights to this user
- Creating tablespaces

4.1 Creating a new user

The easiest way is to create a new user in the IBM Control Center with name “afe” and password “afe”. For the installation of Apparo Fast Edit the user must be defined in the operation system at first.

You can use a freely definable user name.

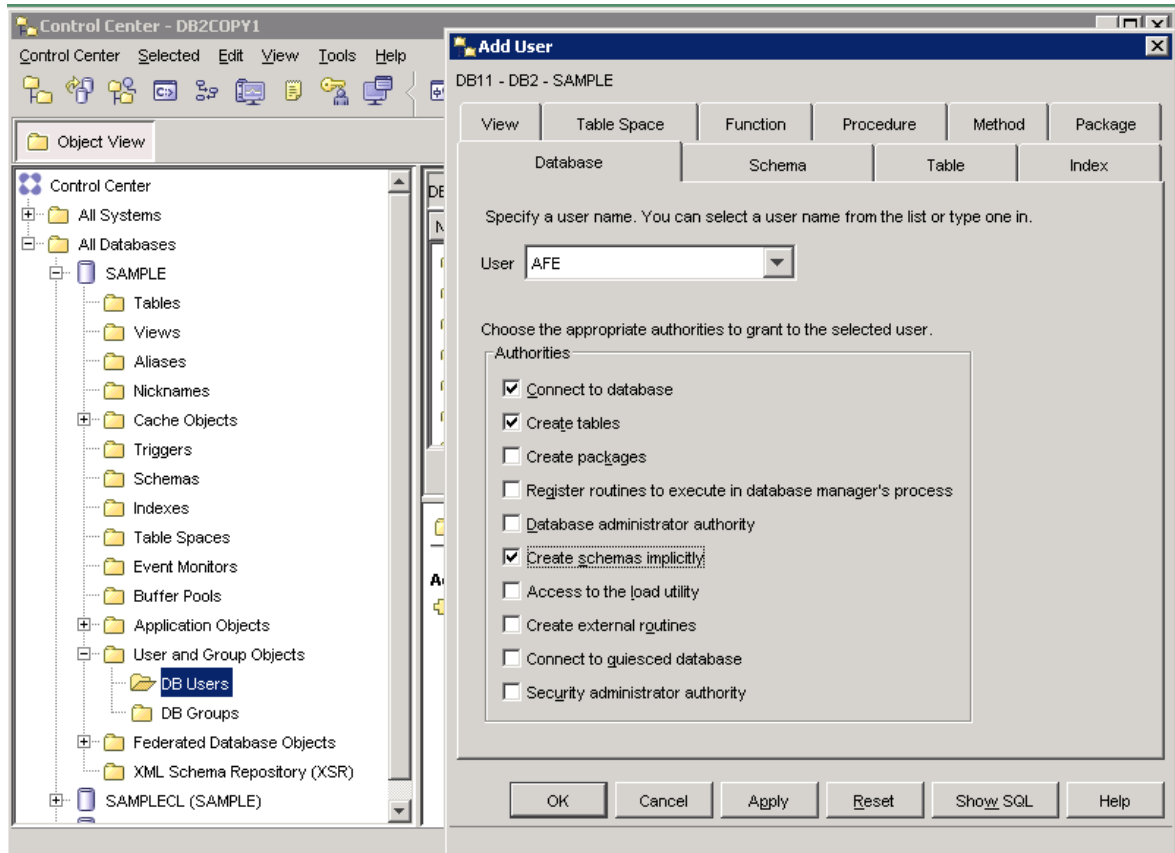
Example for a Windows environment:



4.2 Granting the rights to the user

The user must have following rights:

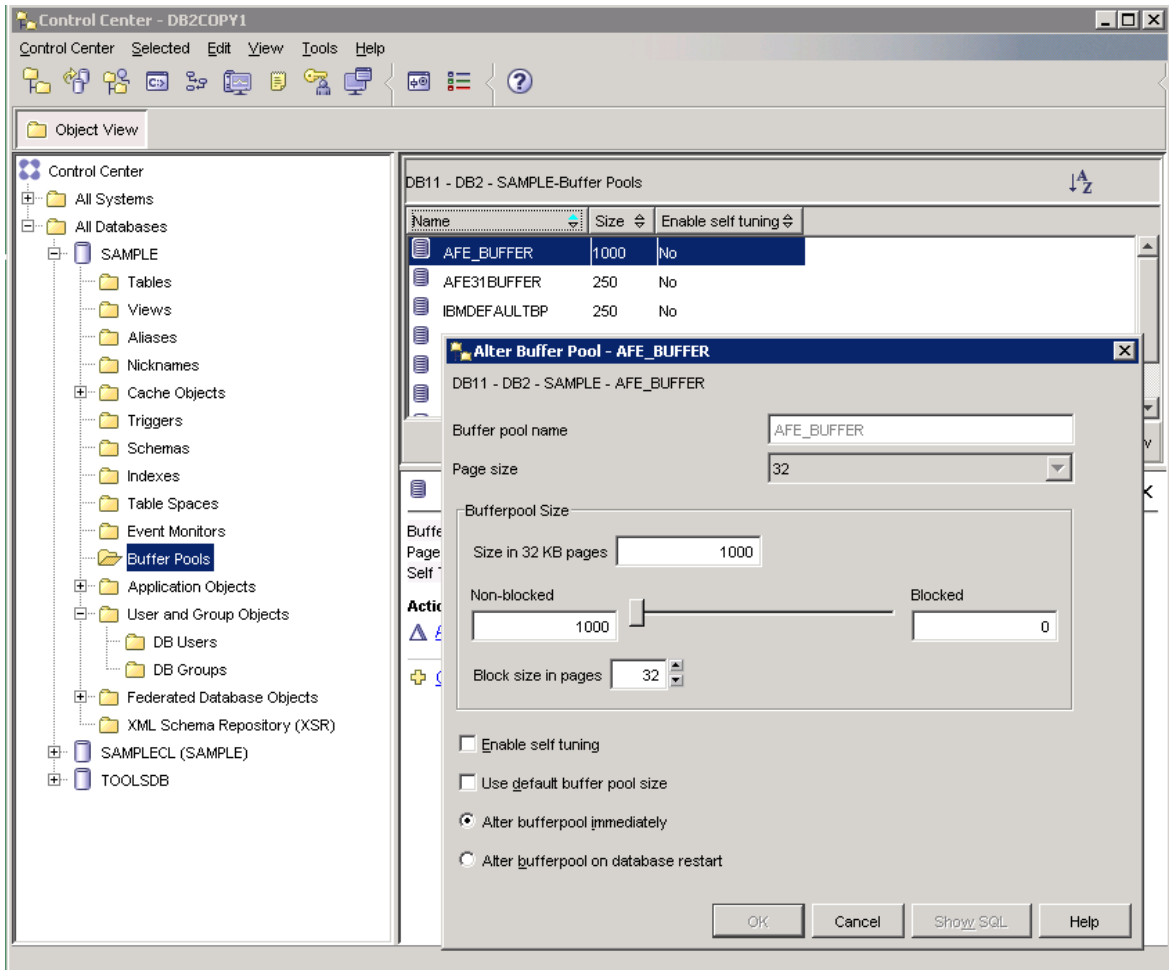
- **Connect to database**
- **Create tables**
- **Create schemas implicitly**



4.3 Creating table spaces

Create following buffer pool and table spaces:

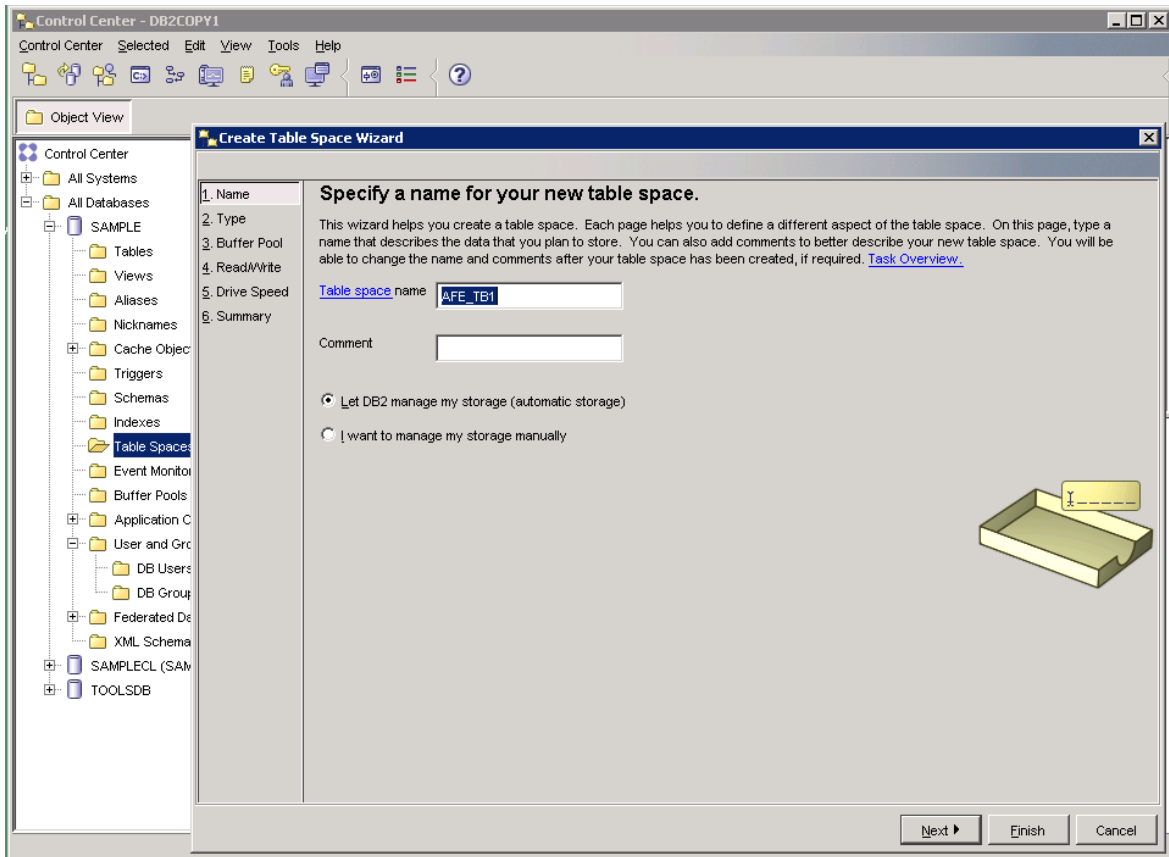
- a. Create a new **buffer pool** with a page size of **32k** and size in **32 KB pages of 1000**.



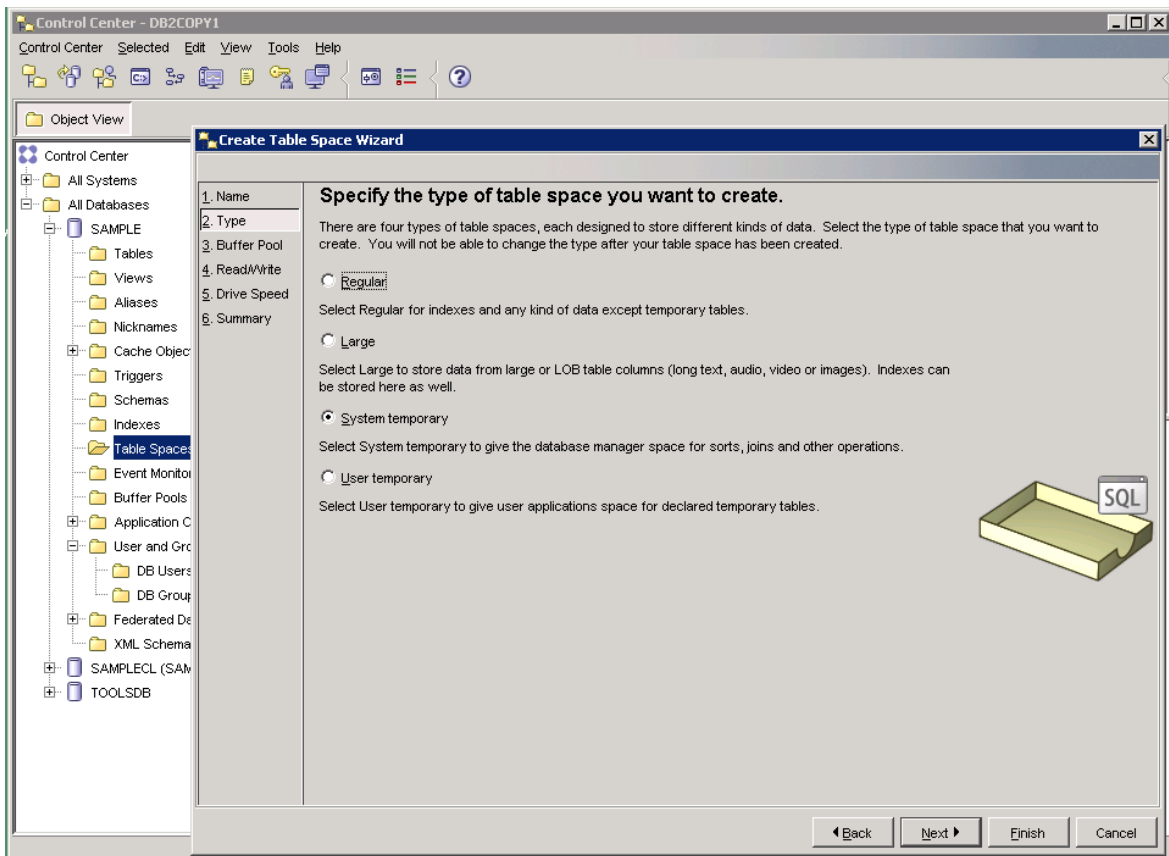
Alternative script:

```
CONNECT TO SAMPLE;
CREATE BUFFERPOOL AFE_BUFFER IMMEDIATE SIZE 1000 PAGESIZE 32 K;
CONNECT RESET;
```

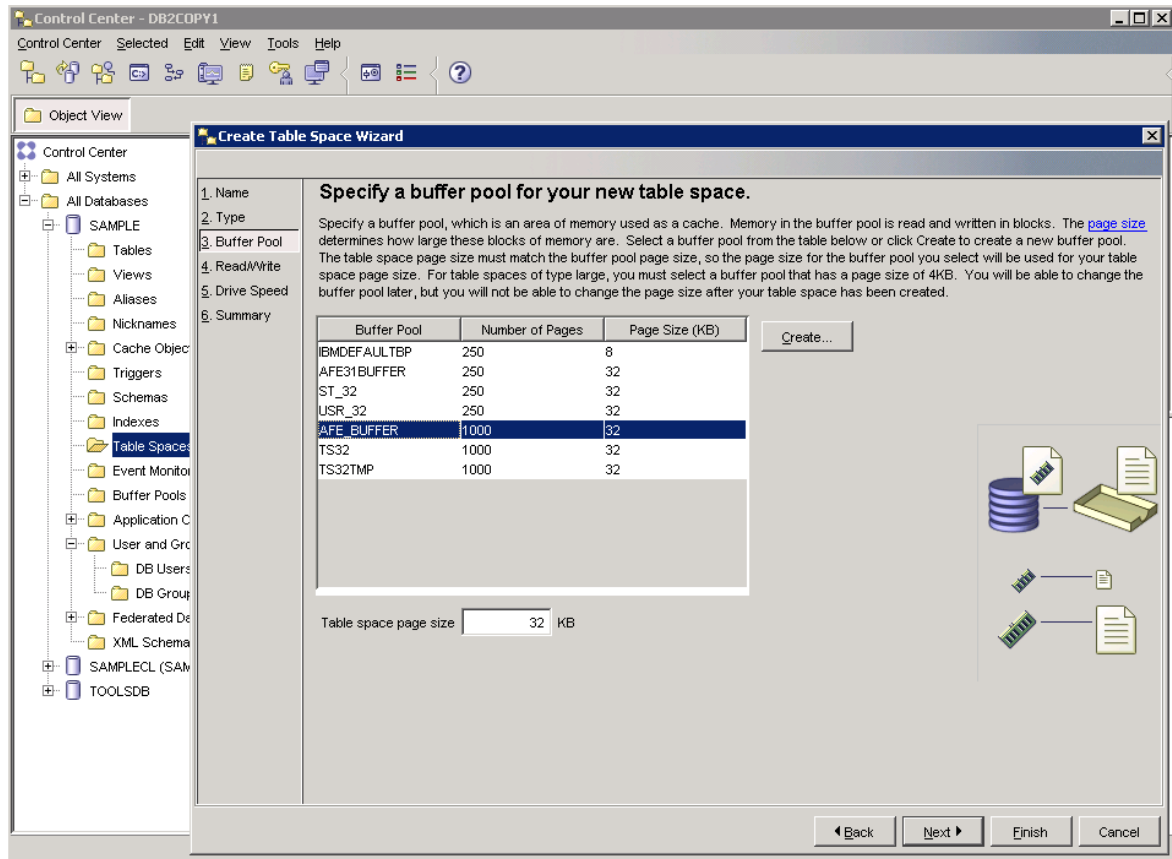
- b. Create a new **system temporary table space** using this 32k buffer pool



New table space



System temporary table space

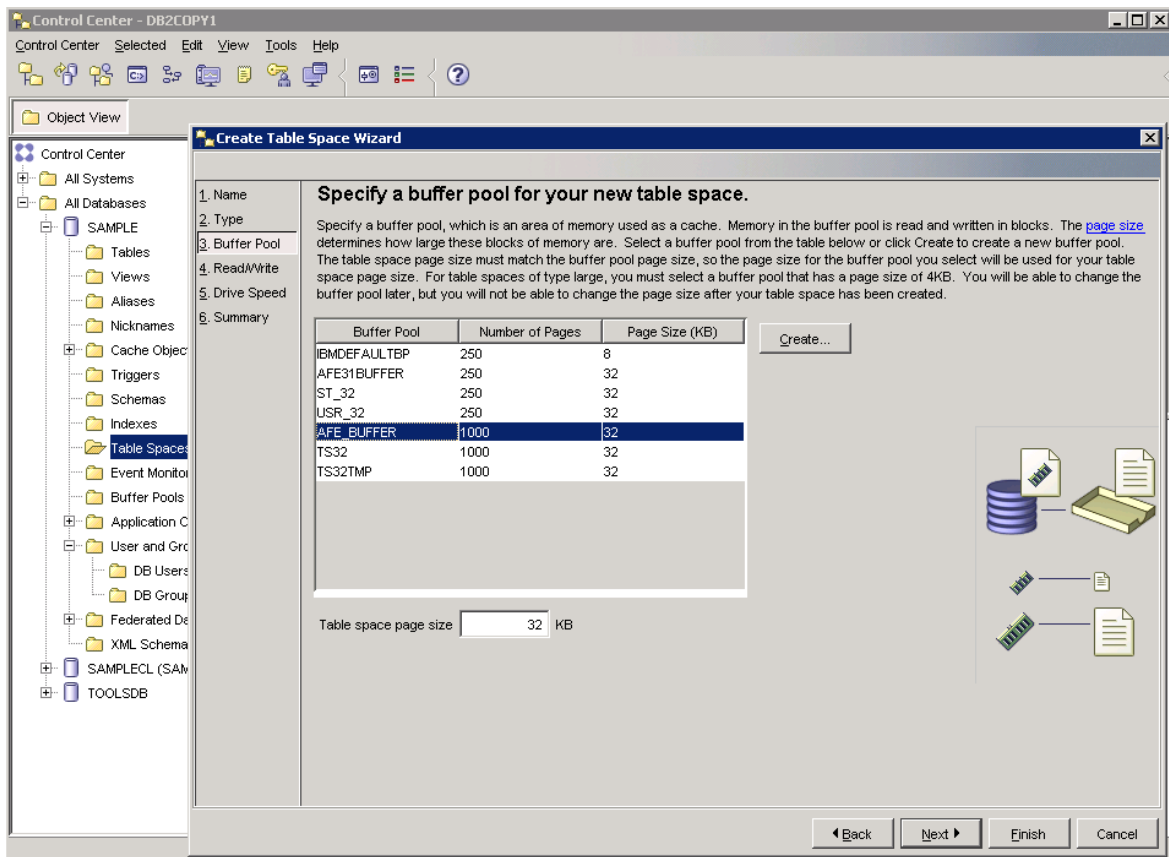
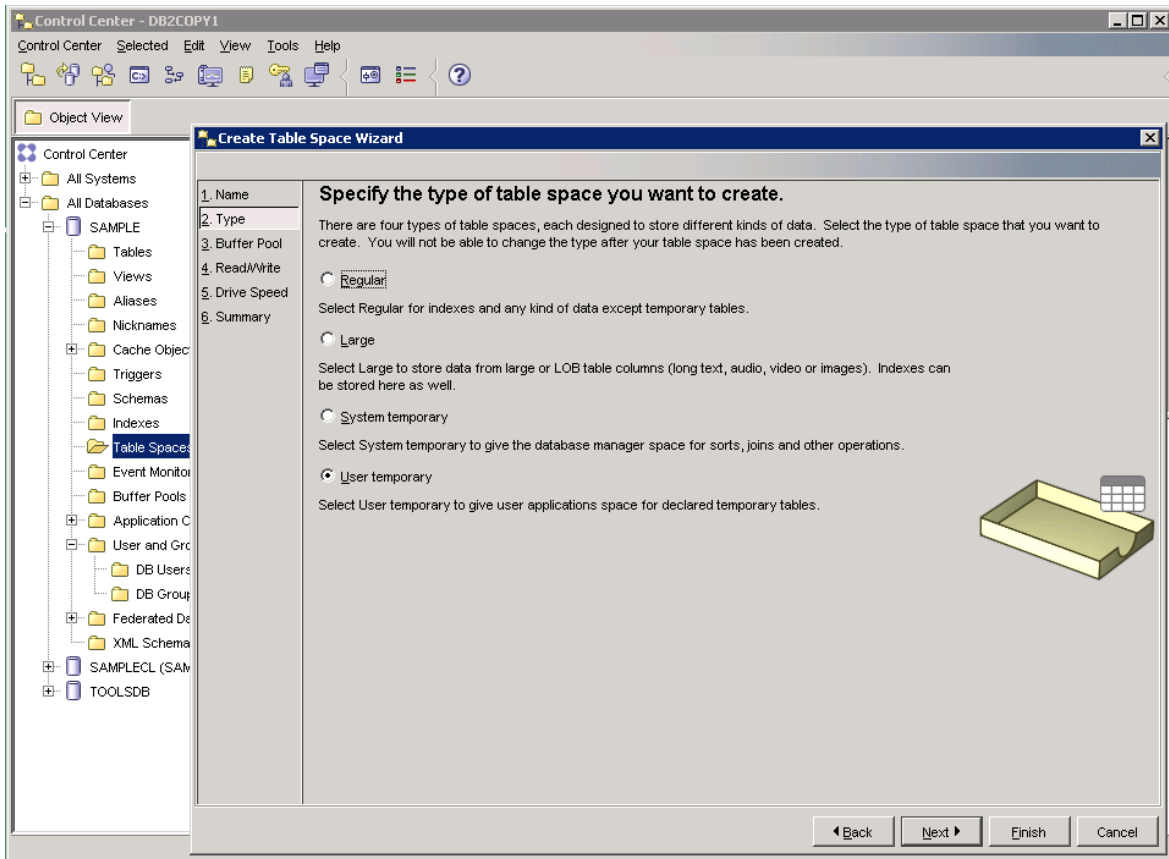


Specify buffer pool

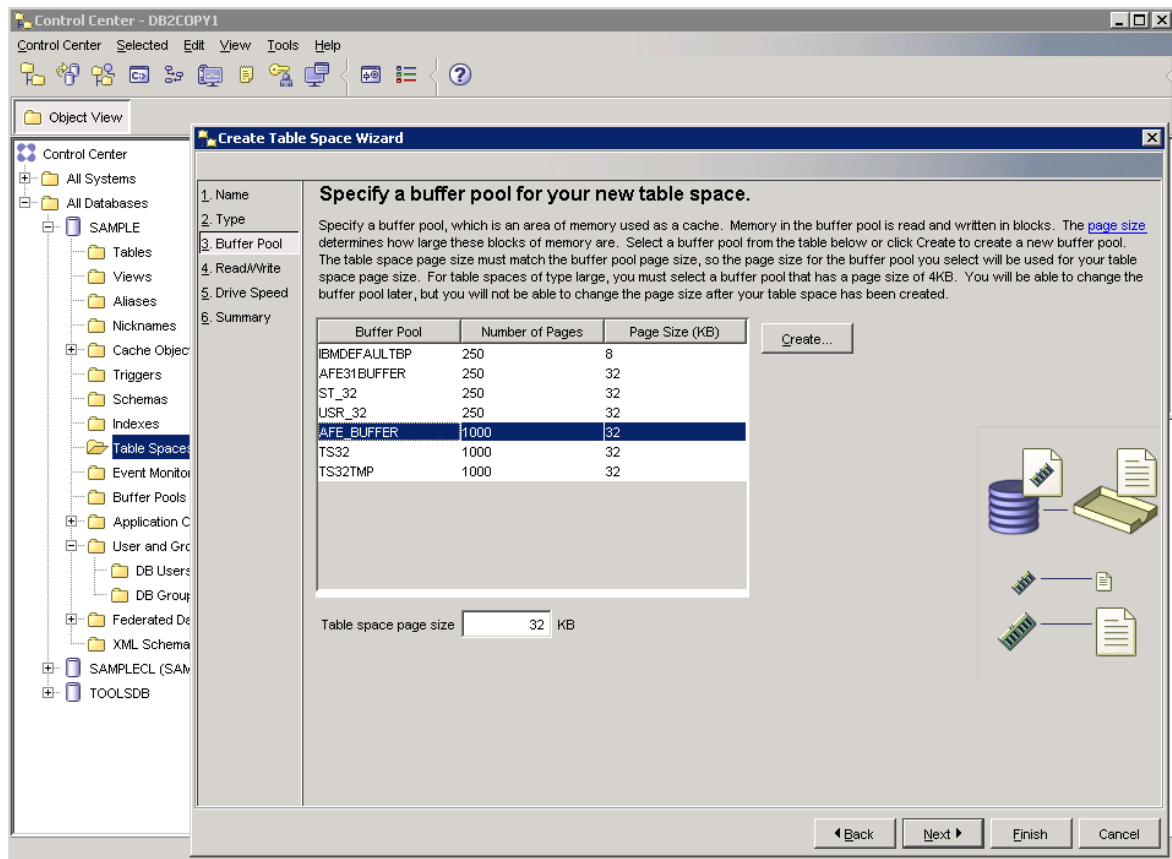
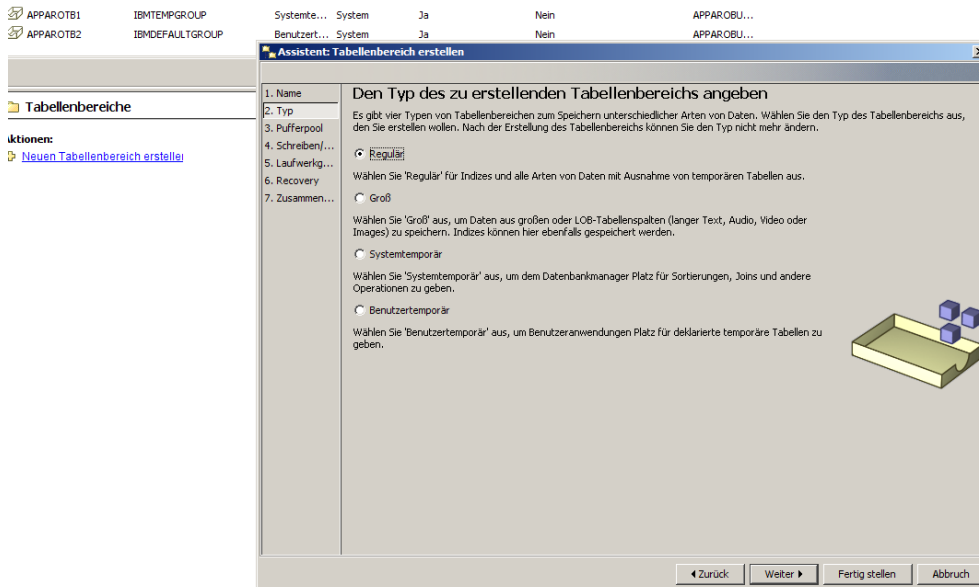
Alternative script:

```
CONNECT TO SAMPLE;
CREATE REGULAR TABLESPACE AFE_TB1 PAGESIZE 32 K MANAGED BY
AUTOMATIC STORAGE EXTENTSIZE 16 OVERHEAD 10.5 PREFETCHSIZE 16
TRANSFERRATE 0.14 BUFFERPOOL AFE_BUFFER DROPPED TABLE RECOVERY ON;
CONNECT RESET;
```

c. Create a new user temporary table space using this 32k buffer pool



d. Create a new **regular user table space** with a page size of **32k**.



Hint: You must grant the usage rights to the database user too!

The database preparation is now complete.

Now it's time to start the installation of Apparo Fast Edit.

Please open the "Installation" document.

5 Automated repository handling

By default, is Apparo Fast Edit managing the creating of repository automatically. That means by default is Apparo Fast Edit creating all necessary database tables automatically if there are no database table accessible.

You can turn this option off in the file afe.properties in file directory

[APPARO-HOME]\FastEdit\tomcat\webapps\KFE\WEB-INF

Search for the property:

flyway.manageRepository=true

flag for AFE repository manager whether it should create and update repository automatically

true - AFE repository is created and updated automatically

false - no automatic repository management, it must be created and updated manually

Please save this file after a text change.

After that you can open the Apparo Configuration manager.

6 Special requirements for Informix databases

Since version 3.70 does not support save points properly due a bug. We recommend to use driver version 4.10.

Apparo Fast Edit is delivering a limited version of this JDBC driver in: [Apparo-Home]\FastEdit\tomcat\webapps\KFE\WEB-INF\lib\ifxjdbc-4.10.JC8DE.jar.

It is a development version with some limitations, e.g. it supports only one connection. For a production system it must be deleted and new valid driver must be placed into the directory.

7 Support

If you need support please write an email to:

support@apparo.solutions