

Installation Guide

Apparo Fast Edit

Single Instance

Qlik Sense

Version 3.2.2



1	<i>Prior to Installation.....</i>	4
1.1	Installation video	5
2	<i>Preparation.....</i>	9
2.1	Creation of a database user for the Apparo Repository	10
3	<i>Installation of Apparo Fast Edit.....</i>	11
3.1	License agreement	12
3.2	Selecting the architecture	13
3.3	Defining the start menu entry and the target file directory	13
3.4	Carrying out the installation	15
3.5	Installation finish	15
4	<i>Configuration of Apparo Fast Edit.....</i>	16
4.1	Architecture.....	20
4.2	Application server.....	20
4.3	Qlik Sense.....	21
4.4	File system paths	23
4.5	Web security system.....	24
4.6	eMail security system	24
4.7	Repository	25
4.8	License key	26
4.9	Starting Apparo	26
5	<i>Adding Qlik Sense Extensions.....</i>	27
6	<i>Installation Apparo clients</i>	29
7	<i>Training movies & documentation.....</i>	31
8	<i>Import/Export definitions using command line.....</i>	32
8.1	Exporting definitions.....	32
8.2	Importing definitions	33
9	<i>Browser requirements</i>	34
9.1	Supported browsers and versions.....	34
9.2	Supported operating systems for client browsers	34
9.3	Additional settings for all browsers	34
10	<i>Using https</i>	35
10.1	Self signed certificate	35
10.1.1	Firefox browser and https	35
10.2	Importing certificate of Qlik Sense.....	37
10.2.1	Export of the Qlik Sense certificate from the certificate store	37

11	<i>Support.....</i>	<i>41</i>
-----------	----------------------------	------------------

1 Prior to Installation

Installing Apparo Fast Edit can be done in 1/2 hour if you prepare your environment.

Please be aware of the following points before starting installation:

Hardware requirements

- File system about 1 GB file storage
- Main Memory about 2 GB main memory

Supported operating systems

- Windows Server 2008 – 2019

Supported Qlik Sense versions and products

- Qlik Sense 2020 January and higher

Supported security systems

- All security systems that are currently in use for Qlik Sense
Apparo is using the security system of Qlik Sense only

Supported virtual environments

- VMware ESX, ESXi
- Amazon AWS

Apparo Fast Edit must be installed using a **local Windows administrator** account.

Qlik Sense Enterprise must be already installed and running.

1.1 Installation video

You can find an installation movie on youtube using:

<http://inst-gliksense.apparo.solutions>

Following steps are necessary in this order:

1	Database preparation for Apparo Repository
2	Installation and configuration of all Apparo Fast Edit
3	Adding Apparo Extensions into Qlik Sense

Apparo Fast Edit can be installed **parallel to the Qlik Sense installation on the same host.**



1	Preparation <ul style="list-style-type: none"> • Analysing environment • Creation of a database user for the Apparo repository
2	Installation of Apparo Fast Edit
3	Configuration of Apparo Fast Edit Configuration using the Apparo Configuration Manager
4	Adding Apparo Extensions into Qlik Sense
5	Installing clients

2 Preparation

1	Preparation <ul style="list-style-type: none"> Analysing environment Creation of a database user for the Apparo repository
2	Installation of Apparo Fast Edit
3	Configuration of Apparo Fast Edit Configuration using the Apparo Configuration Manager
4	Adding Apparo Extensions into Qlik Sense
5	Installing clients

2.1 Creation of a database user for the Apparo Repository

Apparo Fast Edit requires a database repository. In this repository all of your definitions are stored.

Following databases are supported:

- Oracle
- IBM DB2
- MS SQL Server
- Internal database (**for presentation and development only**)

This database user must be defined before starting the Apparo Fast Edit setup.

You can find a detail description in the document "Installation – creating database user".

Essential grants:

- The database user must be able to create database tables
- A Login with this user must be possible

3 Installation of Apparo Fast Edit

1	Preparation <ul style="list-style-type: none"> • Analysing environment • Creation of a database user for the Apparo repository
2	Installation of Apparo Fast Edit
3	Configuration of Apparo Fast Edit Configuration using the Apparo Configuration Manager
4	Adding Apparo Extensions into Qlik Sense
5	Installing clients

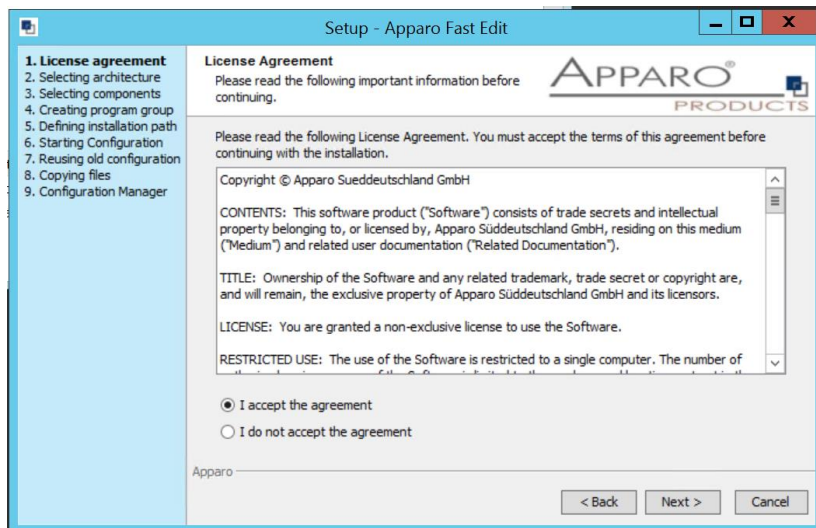
Start the Installation by execute the file

FastEdit3.2.2.0.yyy_windows_tomcat_qliksense.exe



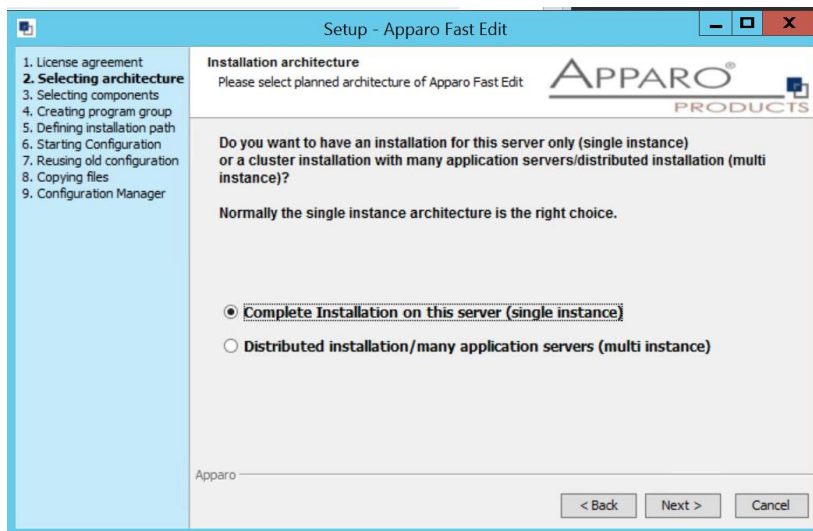
Confirm the beginning of the installation by clicking „**Next**“.

3.1 License agreement



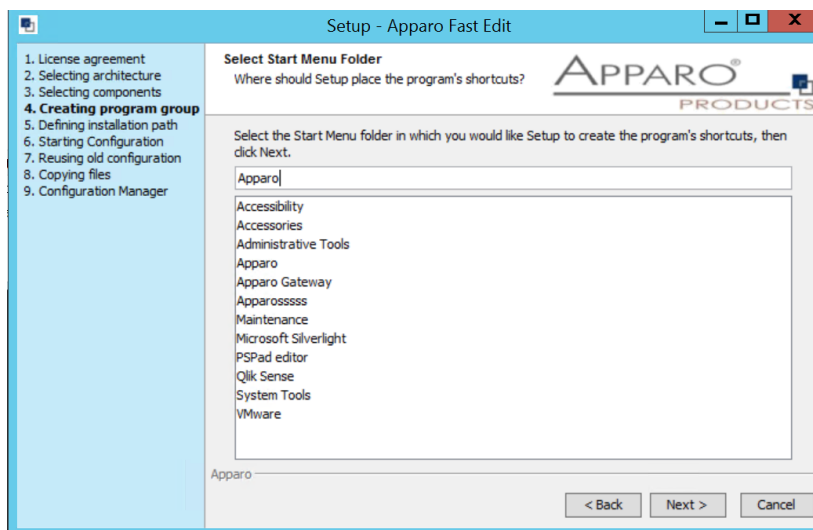
Read and confirm the license agreement by clicking „**Next**“.

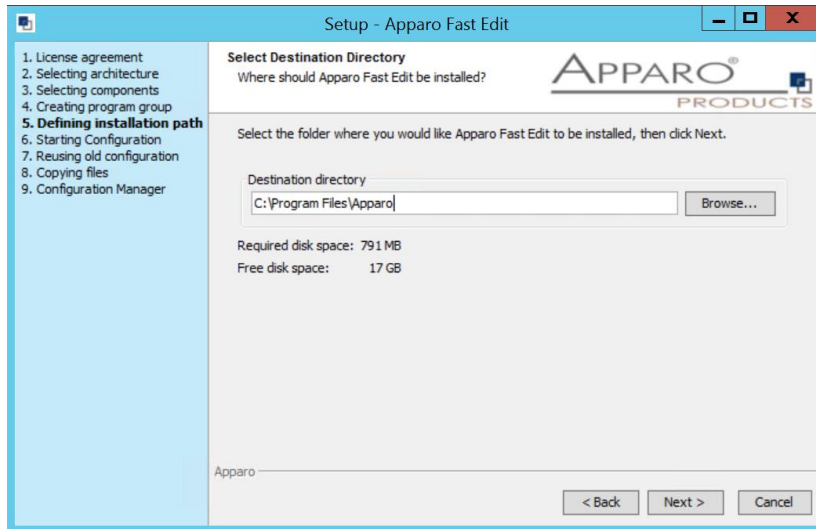
3.2 Selecting the architecture



Select **“Complete Installation on this server”** and click **„Next>“**.

3.3 Defining the start menu entry and the target file directory

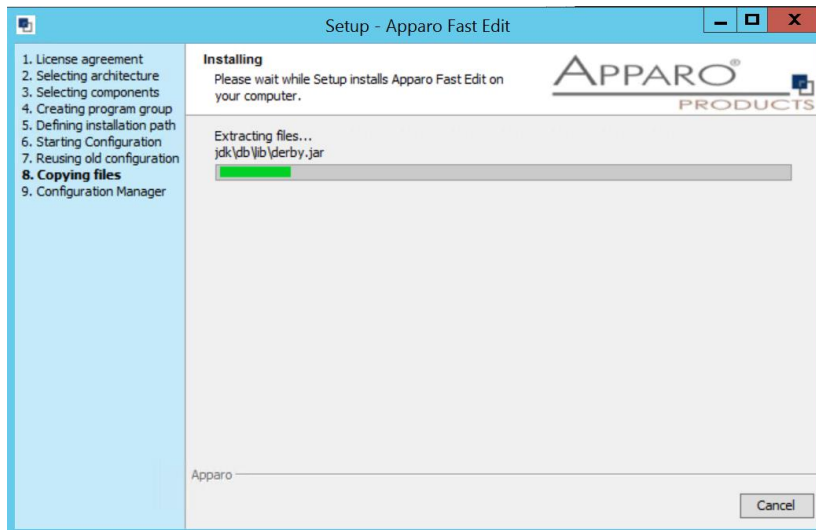




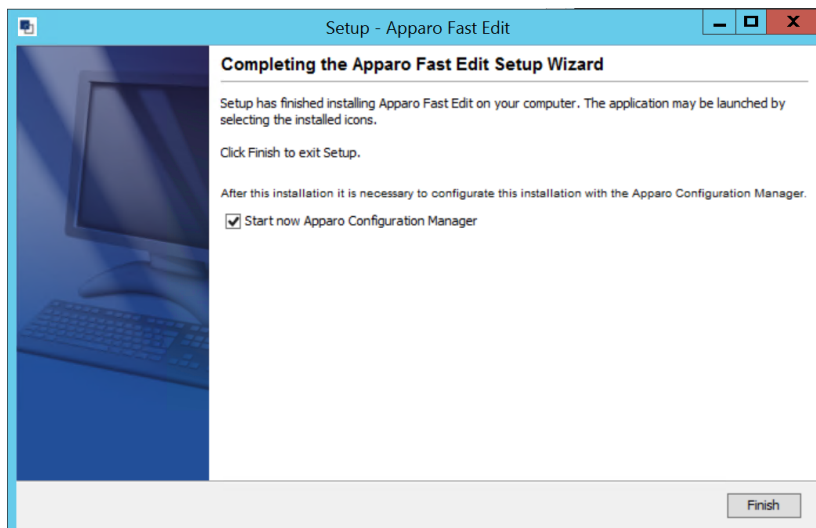
Please define the installation path and choose „**Next >**“.

3.4 Carrying out the installation

Finally the installation of Apparo Fast Edit with the selected architecture will start.
After that this installation must be configured with the **Apparo Configuration Manager**.



3.5 Installation finish



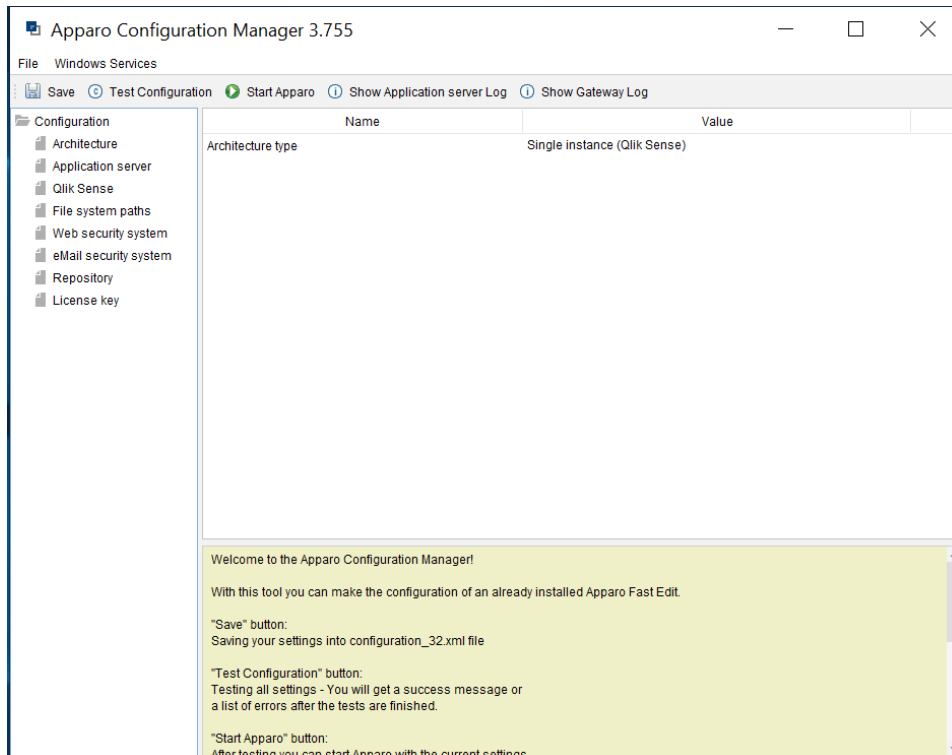
Now it's time to **configure** the installation with the **Apparo Configuration Manager**.

Click „**Finish**“ for completing the installation and to start the configuration.

4 Configuration of Apparo Fast Edit

1	Preparation <ul style="list-style-type: none"> Analysing environment Creation of a database user for the Apparo repository
2	Installation of Apparo Fast Edit
3	Configuration of Apparo Fast Edit Configuration using the Apparo Configuration Manager
4	Adding Apparo Extensions into Qlik Sense
5	Installing clients

With the **Apparo Configuration Manager** you are able to configure and start the already installed Apparo Fast Edit.



The settings are grouped into chapters (left side).

For each setting you can read a helpful description text in the yellow box.

To do list:

1	Define all settings
2	Press the „Test Configuration“ button for testing all settings.
3	Press the „ <u>Start Apparo</u> “ button for starting the application server
4	<p>You can see the log file of the application server with pressing „<u>Show Application server Log</u>“</p> <p>If the application server is running then you can see in the log:</p> <pre> 2019-11-07 02:37:41,831 INFO com +++++ + Apparo Fast Edit 3.2.2.x (Build nnn) was successfully started at 07.03.2019 02:37:41 + +++++ </pre>

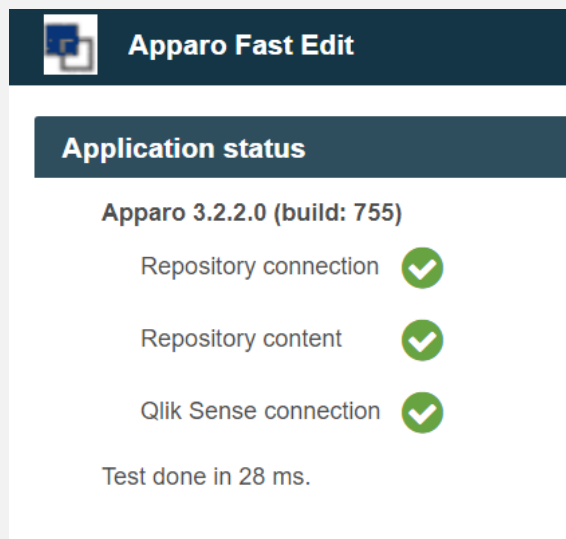
Test of an Apparo application server:

<http://<applicationserver:<start port>/apparo/pages/apptest.xhtml>

Example: <http://server1:18000/apparo/pages/apptest.xhtml>

With this URL you can test if the Apparo application server is running fine or has problems.

Example:



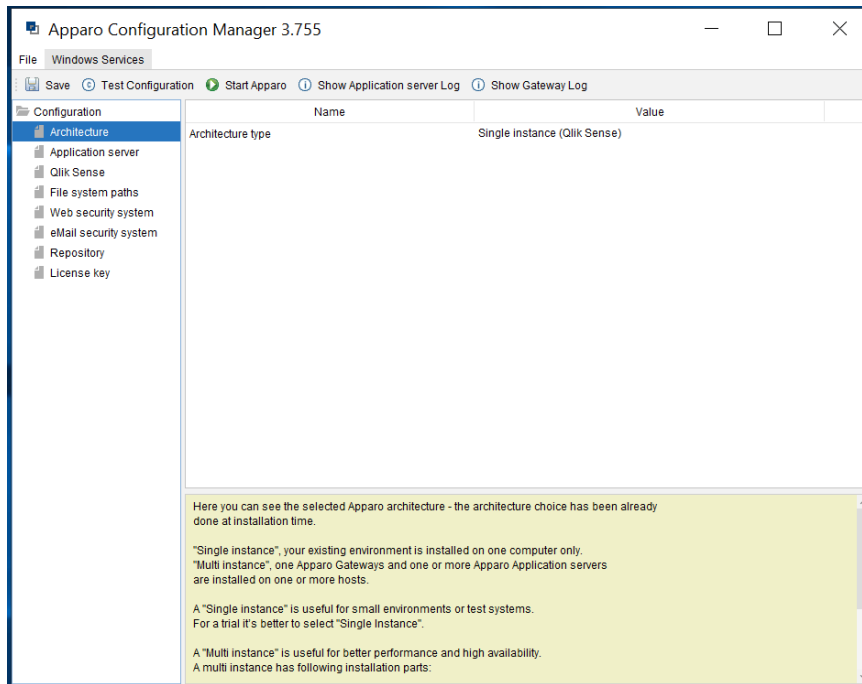
The configuration of Apparo Fast Edit is stored in file configuration.xml in file directory [APPARO_HOME]\FastEdit\cm .

If you plan a parallel/cluster system then it's sometimes comfortable to copy this file into the target system.

If you open the Apparo Configuration Manager then you will see the same configuration settings like of your source system and it's possible to change it comfortable.

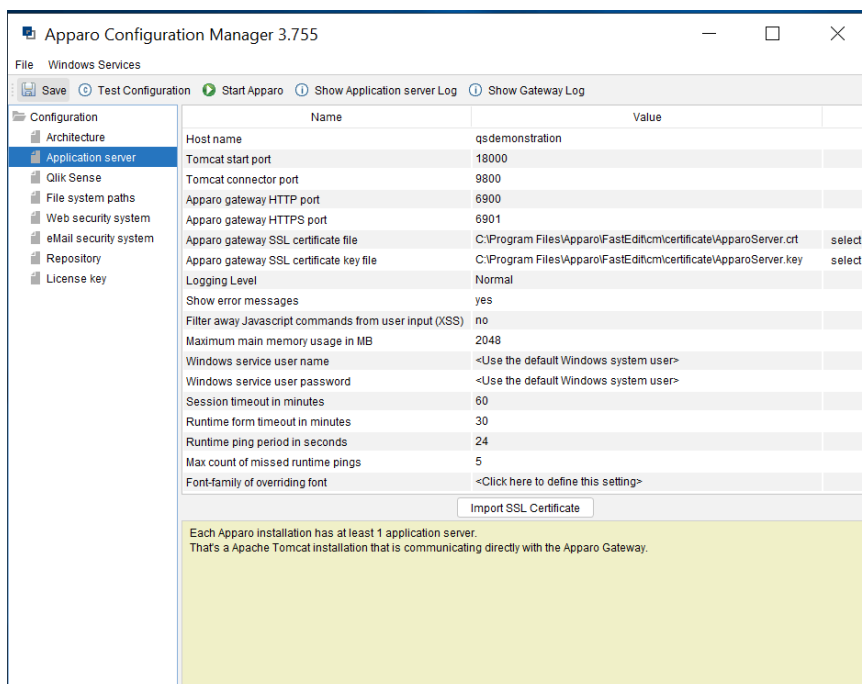
4.1 Architecture

In this section of the Configuration Managers you can find the selected Fast Edit architecture. This architecture was defined at installation time and is not changeable now.



4.2 Application server

Settings for the Apparo Application Server:

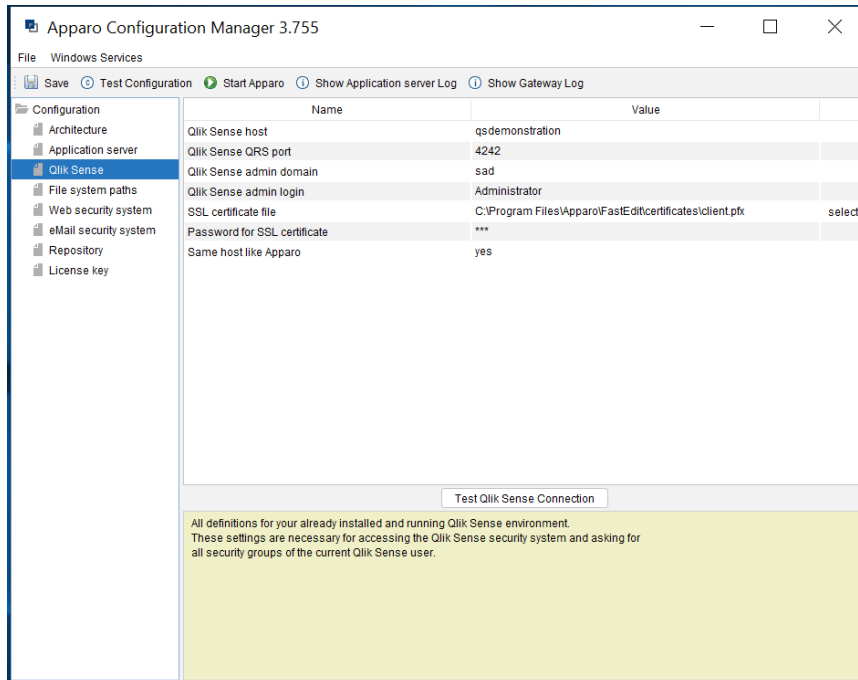


Apparo is automatically reusing the SSL certificate of Qlik Sense that you have specified in tab "Qlik Sense".

4.3 Qlik Sense

Settings for the already installed Qlik Sense environment:

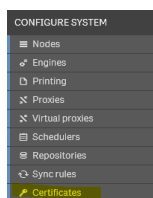
Qlik Sense host: The name that is used for calling the Qlik Sense proxy system. It can be an external host name or internal host name.



Apparo Fast Edit must be able to read user data from the Qlik Sense proxy system. Because the Qlik Sense system is secured it is necessary to use a security certificate from the installed Qlik Sense system.

How to generate this certificate:

Please open the Qlik Sense Management Console and select “**Certificates**” from the left panel:



Press “Add machine name” and use the name of the Qlik Sense host that is defined in setting “**Qlik Sense host**” (see screenshot) , e.g. MYMACHINE.mydomain.com or if it is a internal name like srv222.

Hint: Upper/lower case is important.



After that enter the necessary password information **and include secret key**:

Certificate password	<input type="password"/>
Retype password	<input type="password"/>
Include secret key	<input checked="" type="checkbox"/>
Export file format for certificates	Windows format

Certificates will be exported to this disk location on the server: C:\ProgramData\Qlik\Sense\Repository\Exported Certificates

Certificates will be exported to this disk location on the server:

[Installation Drive]:\ProgramData\Qlik\Sense\Repository\Exported Certificates\[name]

Now you can select the **client.pfx** file for setting „SSL certificate file“.

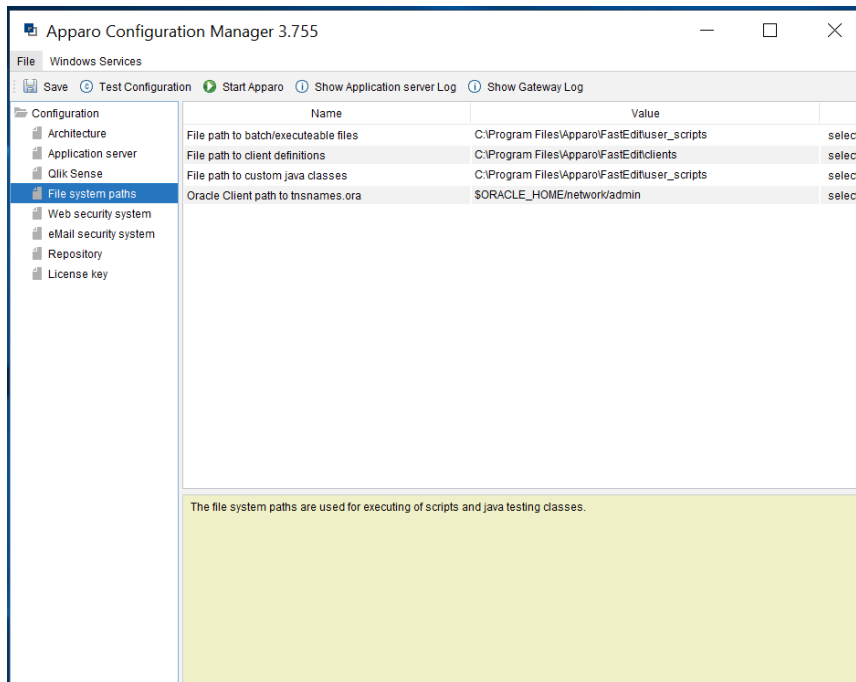
Hint: User for login into the Qlik Sense repository service:

This Windows user must have the Qlik Sense role “RootAdmin”.

If not then the login will be not possible.

4.4 File system paths

File directories for the server-side scripts and user defined Java classes:



It is important that the Windows system user or the user that is running the Windows Service of Apparo Fast Edit has write and read access to these file directories.

Hint: If you use many application servers then all application server must use the same file directory.

Therefore it's possible to use Windows shares, e.g. [\\server1\scripts](#)

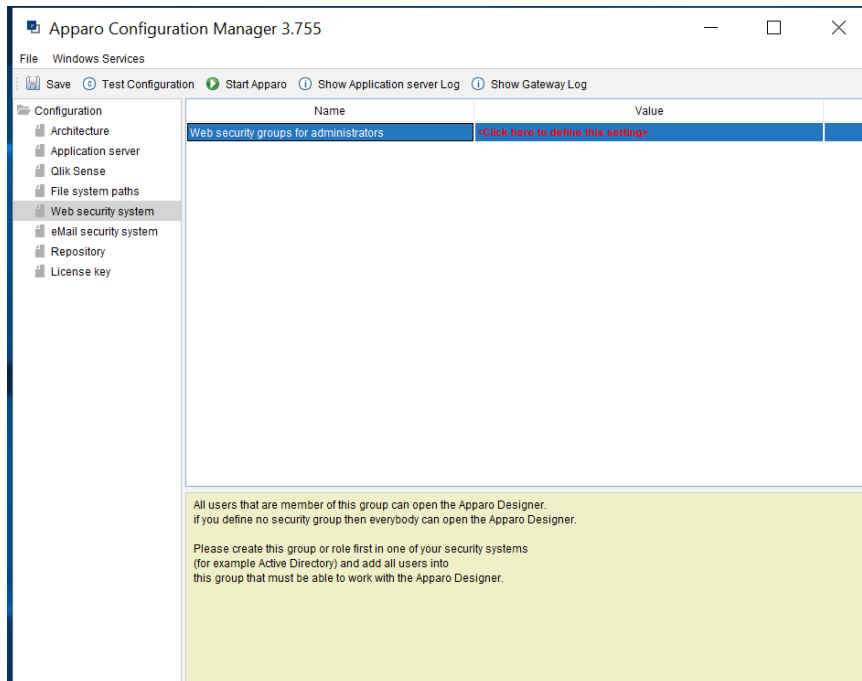
If using shares it's necessary that the Windows service of Apparo Fast Edit must not use a local system account.

Using a Windows Administrator account is for example a solution.

4.5 Web security system

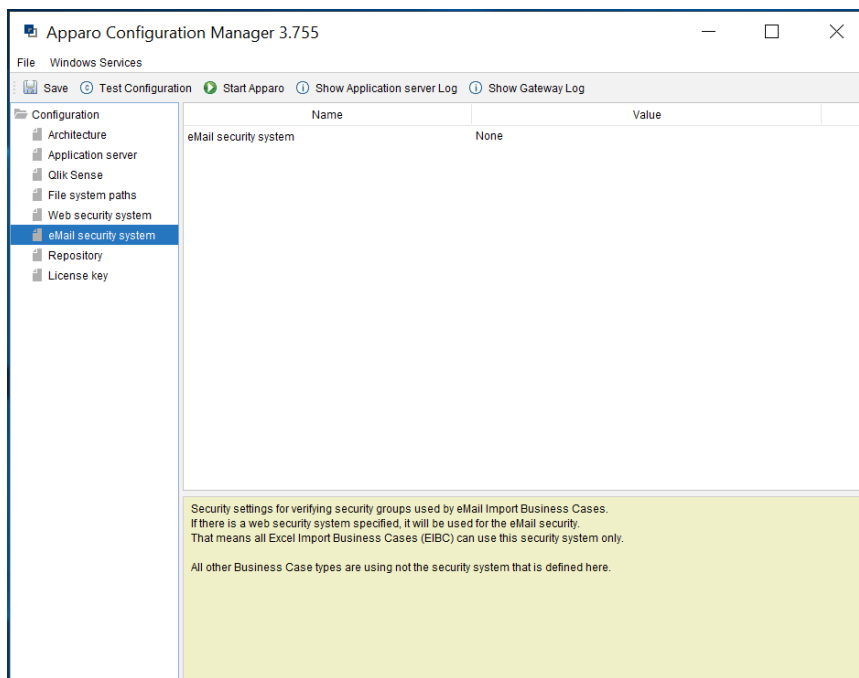
In this chapter you can define the **security group** of all users that is necessary to be able to open the Apparo Designer **with full access**.

If there is no security group defined then all users can open the Apparo Designer with full access.



4.6 eMail security system

The Excel Import Business Case is running outside of the Qlik Sense security and need therefore an own security system.



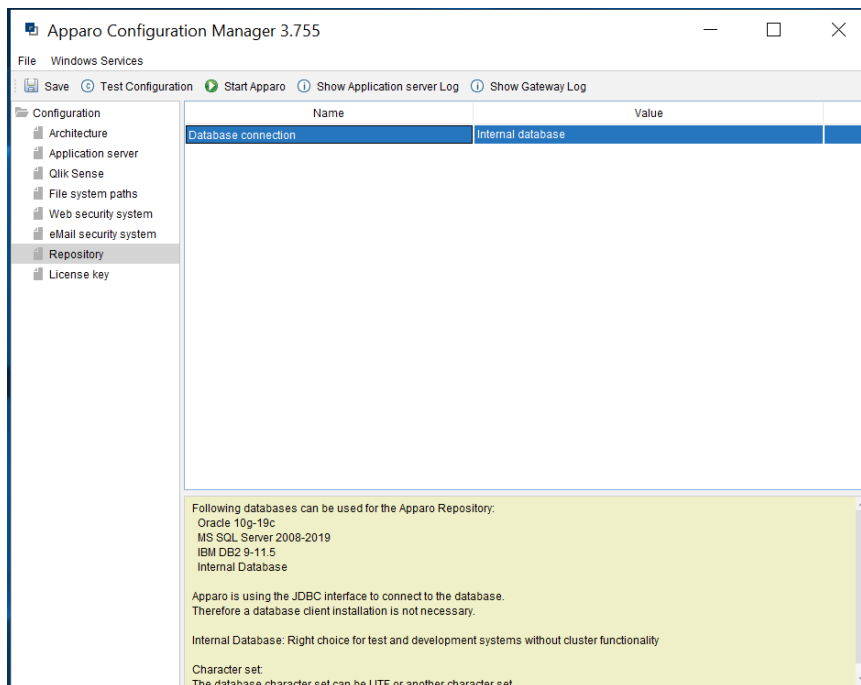
4.7 Repository

The database connection to the Apparo repository.

The repository are many database tables in that all definitions are stored.

For testing you can use the “internal database” too.

This database is slower than a normal database like Oracle, MS SQL Server or IBM DB2 but you don’t need an installation.

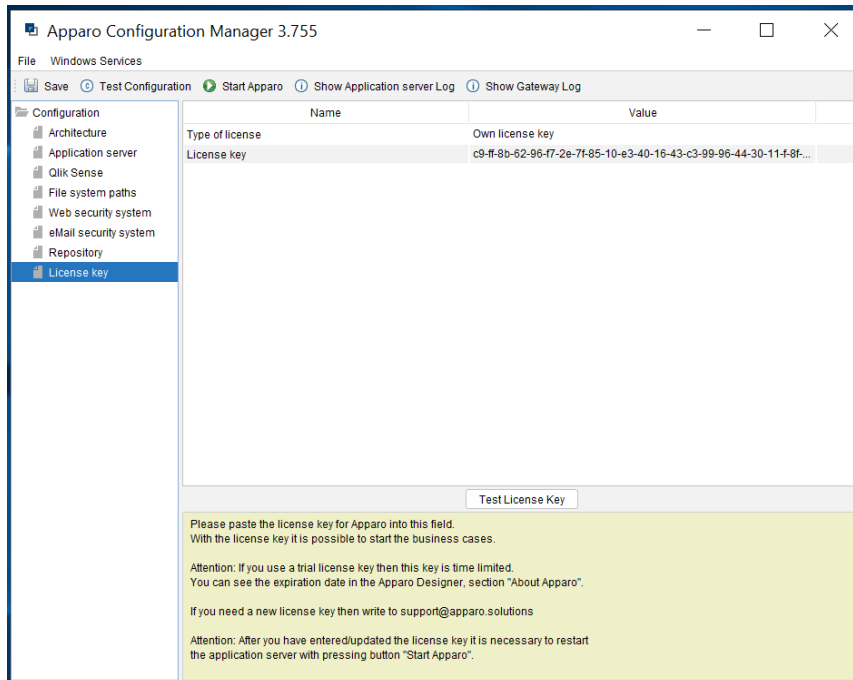


4.8 License key

In this section you can add & change the license key. This key is necessary to run Apparo Fast Edit.

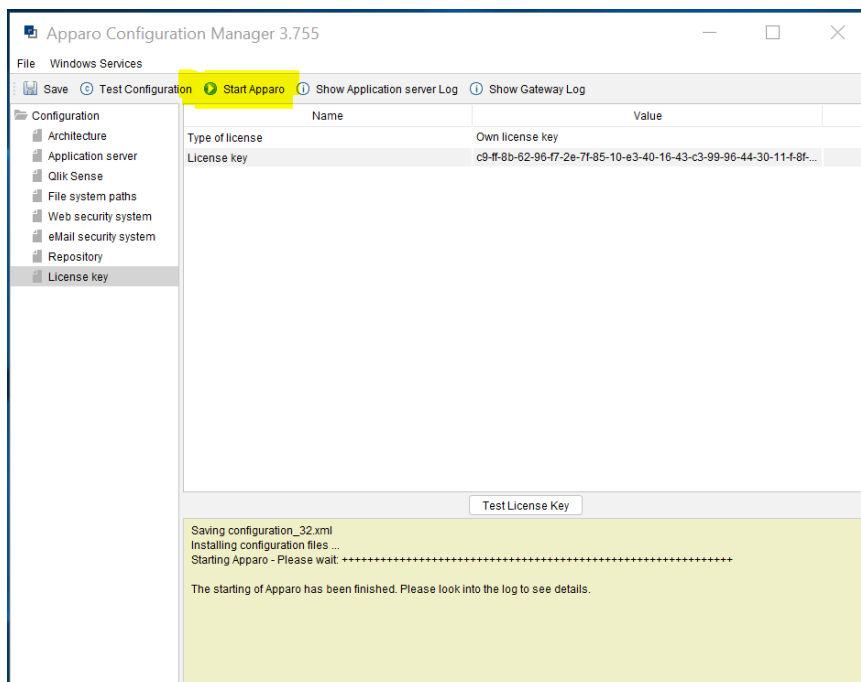
You can choose the “APPARO SMALL LICENSE” too.

This license is **for up to 3 named users and 10 Business Cases. It is not limited in time.**



4.9 Starting Apparo

After you have entered all setting values it is time to start Apparo with pressing “Start Apparo” button:

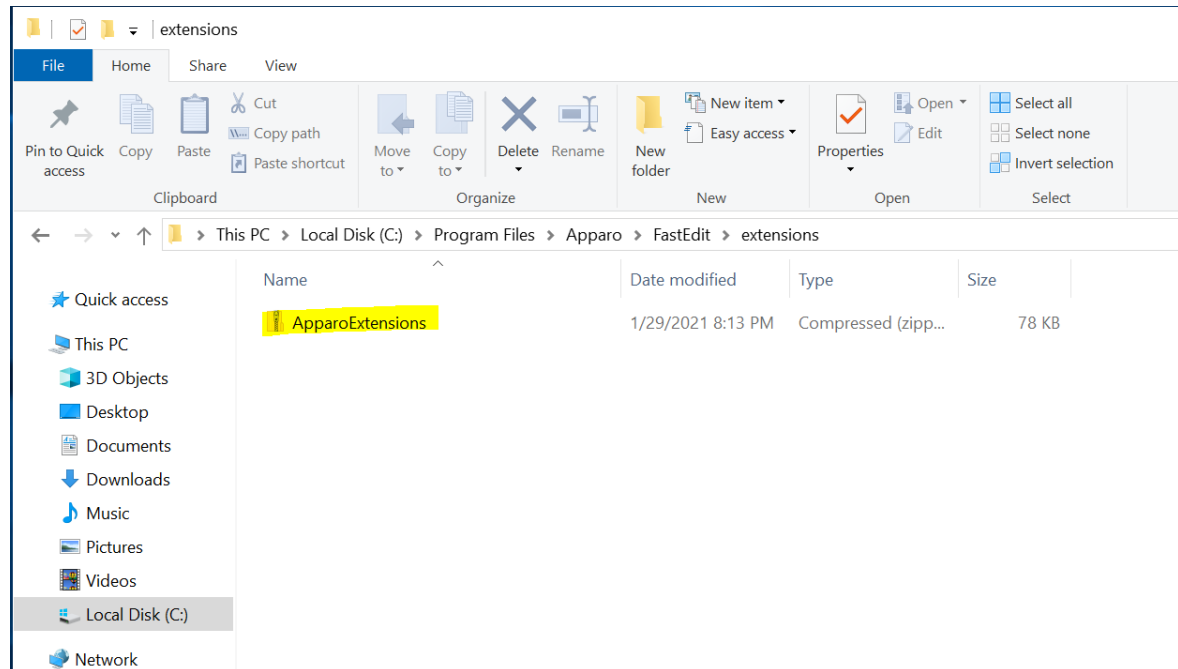


5 Adding Qlik Sense Extensions

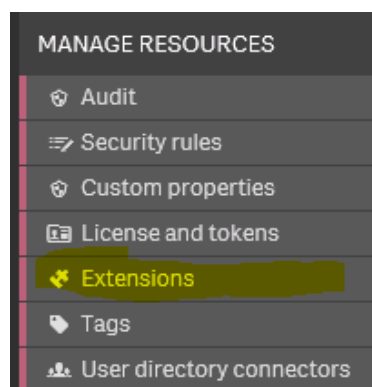
Apparo Fast Edit is using Qlik Sense Extensions.
Therefore, they must be first installed into your existing Qlik Sense system.

Open your Windows Explorer in [APPARO_HOME]\FastEdit\extensions

You can see:




Please open now the Qlik Sense Management Console and select “Extensions”:





Please import now the file ApparoExtensions.zip


After that please open Qlik Sense Hub and create a new App.


Now you can see some new Apparo widgets:


-  Apparo BC

-  Apparo Button BC

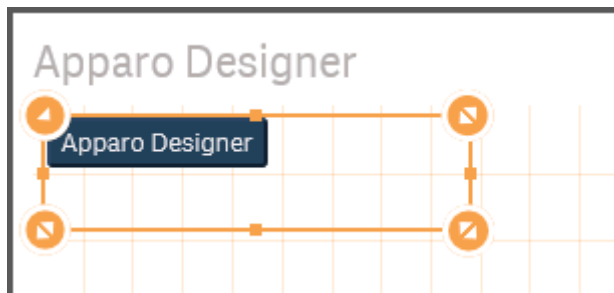
-  Apparo Check

-  Apparo Comment

-  Apparo Designer Button

-  Apparo Table

Drag & Drop the new widget “**Apparo Designer**” into your sheet and press the button.



You should see:

Apparo Fast Edit
Client management and settings
Administrator

Connections

Business Cases

Settings

Clients

Training

About Apparo

The table below lists all existing clients of this environment. A client is a separated world with own connections, Business Cases, languages and security.

+ New
Import
Export

Installed clients					
<input type="checkbox"/>	Client ID	Client name	Associated security groups	Order	Actions
No client is currently installed. Please create one client first					

Show description

6 Installation Apparo clients

1	Preparation <ul style="list-style-type: none"> • Analysing environment • Creation of a database user for the Apparo repository
2	Installation of Apparo Fast Edit
3	Configuration of Apparo Fast Edit Configuration using the Apparo Configuration Manager
4	Adding Apparo Extensions into Qlik Sense
5	Installing clients

Now it is necessary to install the clients.

Apparo Fast Edit Client management and settings Administrator

The table below lists all existing clients of this environment. A client is a separated world with own connections, Business Cases, languages and security.

[+ New](#) [Import](#) [Export](#)

Client ID	Client name	Associated security groups	Order	Actions
No client is currently installed. Please create one client first				

Show description

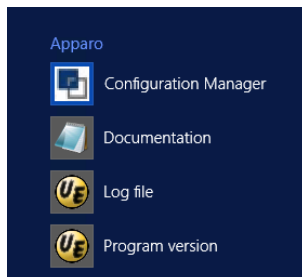
Please read now the document “**Configuration Guide**” for defining/importing clients.

The installation & configuration on serverside is now successfully completed.

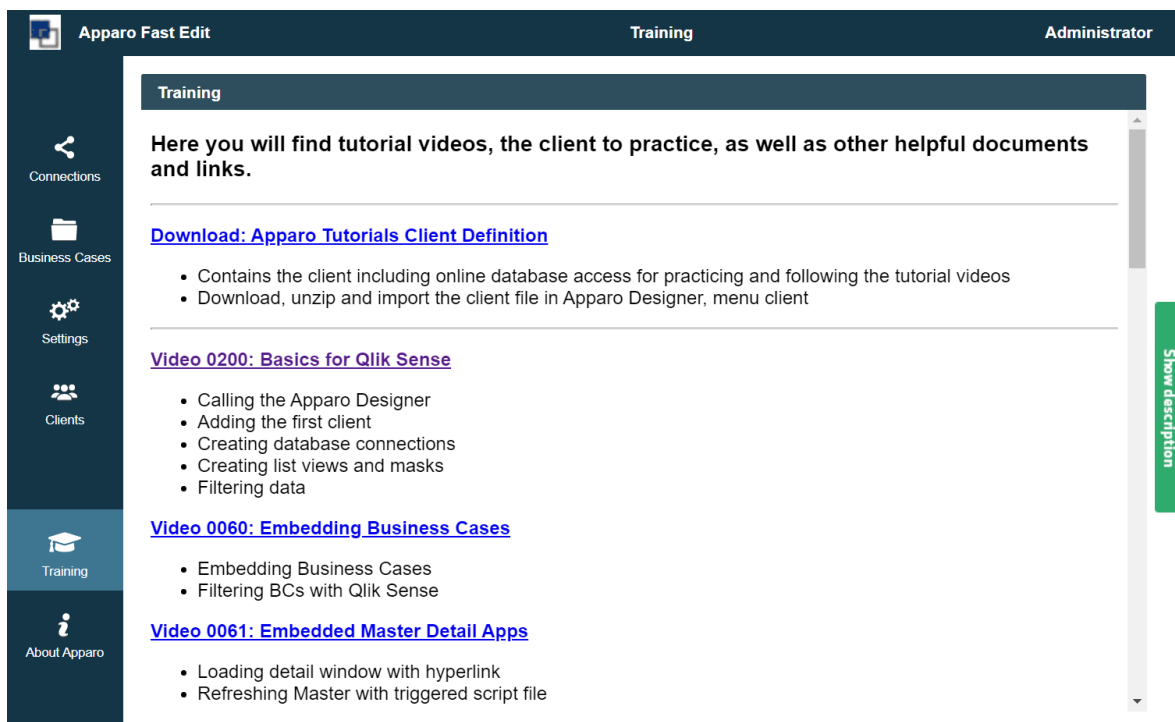
7 Training movies & documentation

You can find all text documentations in

Windows Start (left corner) / All Programs / Apparo / Documentation



You can find all training movies in the Apparo Designer, choosing chapter “Training”:



General documentation about Apparo Fast Edit:

<http://doc.apparo.solutions>

8 Import/Export definitions using command line

You can export and import clients (including languages, folder, Business Cases, connections, DB-messages), Business Cases, folder and connections using scripts.

8.1 Exporting definitions

The export program is stored in the file directory "export": [APPARO_HOME]\FastEdit\export

Use script **afe-export.bat**

If you start the script without arguments then you can see the possible arguments:

-afeUrl <URL>	The Apparo Fast Edit URL address that will export the data. Example: http://localhost:18000/KFE. If you don't use this argument then the export is using the application server of this installation and its installation port.
-bcid <BUSINESS_CASE_ID>	ID of a Business Case you want to export.
-clientId <CLIENT_ID>	ID of a client you either want to export or an ID of a client the target object (Business Case, folder or connection) belongs to.
-dbc <CONN_NAME>	Name of a database connection you want to export.
-emailc <CONN_NAME>	Name of an email connection you want to export.
-f <FILEPATH>	Filename & path where to write the exported XML.
-folderPath <PATH>	Path of a folder you want to export. It should start with a slash character '/' which should also be used as a path separator.
-h	Displays this help text
-p <password>	The password used to authenticate. This setting is necessary in a secured environment.
-u <username>	The user used to authenticate. This setting is necessary in a secured environment.

All export activities are logged server side in file directory logs, file afeexport.log

Sample: **afe-export.bat -f \etc\definition.xml -clientId DemoClient**

8.2 Importing definitions

The import program is stored in the file directory "import": [APPARO_HOME]\FastEdit\import

Use script **afe-import.bat** (If you start the script without arguments then you see the possible arguments)

-afeUrl <URL>	The Apparo Fast Edit URL address that will export the data. Example: http://localhost:18000/KFE. If you don't use this argument then the export is using the application server of this installation and its installation port.
-clientId <CLIENT_ID>	ID of a client that Business Cases, language definitions, database messages or connection definitions will be imported into.
-f <FILE>	The file that contains the client, Business Case, language definition, database messages or connection definitions.
-h	Displays this help text
-importSecurity <true false>	Business cases and folders may contain a list of user groups defining who can access them. If this option is set to false, such security information will not be imported.
-overwriteBc <true false>	If true then Business Cases from the import file will overwrite already existing Business Cases if their Business Case ID are the same. If false, Business Cases with such conflicting identifiers will be skipped.
-overwriteClient <true false>	If true then clients from the import file will overwrite already existing clients with the same identifiers including client content like Business Cases. If false then clients with such conflicting identifiers will be skipped.
-overwriteClientButRescueExistingConnections <true false>	If this parameter is used, then all connections of an existing client that is currently being re-imported (and overwritten if present) will be left unchanged. Default=false. New connections are created.
-overwriteConnection <true false>	If true then database and email connections from the import file will overwrite already existing connections with the same names. If false then connections with such conflicting names will be skipped.
-p <password>	The password used to authenticate. This setting is necessary in a secured environment.
-u <username>	The user used to authenticate. This setting is necessary in a secured environment.

All import activities are logged server side in file directory logs, file afeimport.log

Sample: **afe-import.bat -f \etc\definition.xml -u aferep -p aferep -clientId Sales**

9 Browser requirements

9.1 Supported browsers and versions

- Microsoft Internet Explorer 11
- Microsoft Edge (current version)
- Mozilla Firefox (current version)
- Google Chrome (current version)
- Apple Safari (current version)

9.2 Supported operating systems for client browsers

Microsoft Windows

9.3 Additional settings for all browsers

- Popup blocker must be **disabled**
- File download (Excel files) must be allowed

10 Using https

10.1 Self signed certificate

If your Qlik Sense environment is running with **https** then Apparo is called **automatically** using https too. In this case the Apparo Gateway need an **SSL certificate** too – same like the Qlik Sense proxy.

In architecture “Single Instance” Apparo is using **automatically** the Qlik Sense certificate.

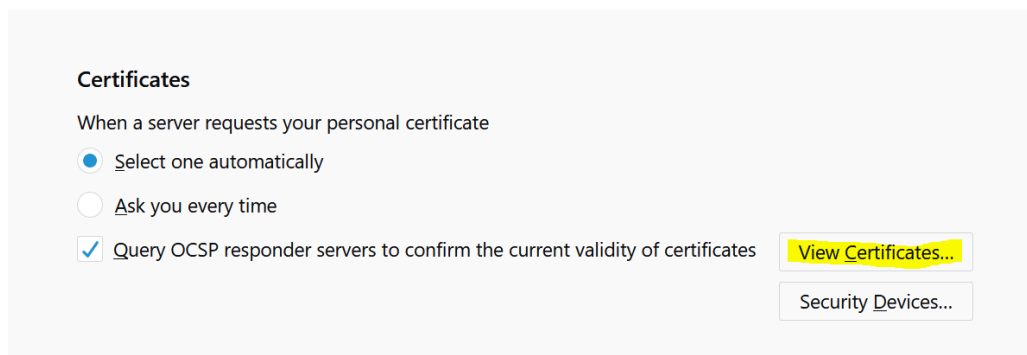
In this case the MS Internet Explorer and Chrome browser do not need additional settings.

10.1.1 Firefox browser and https

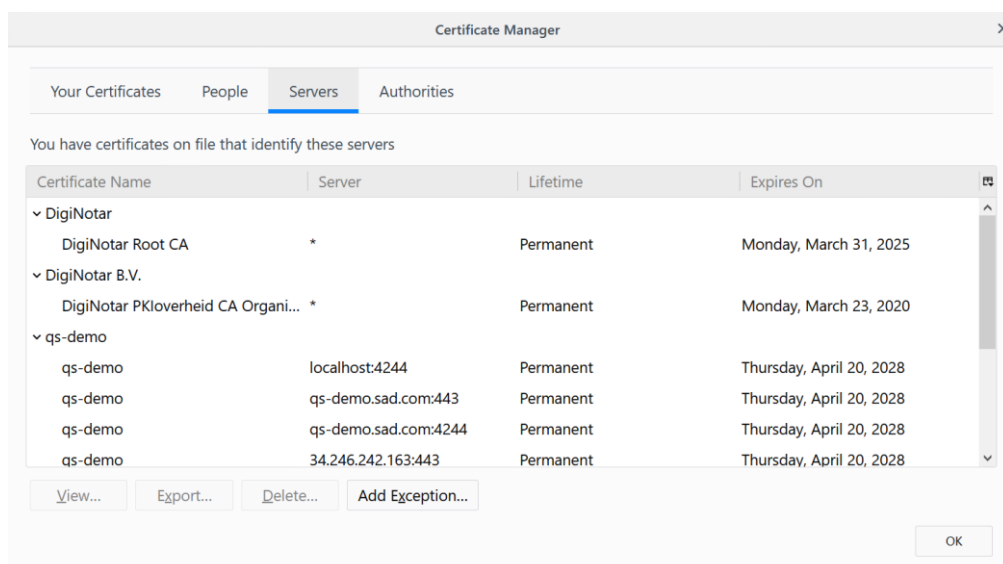
If you use a **self signed certificate** then Firefox is complaining about that and need an exception.

Please use the domain that is used for calling Qlik Sense and use the http-port for Apparo. Default is 6901.

Open the Firefox options and look for:

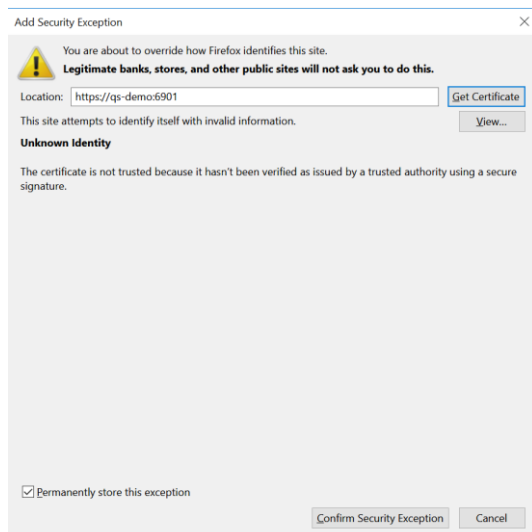
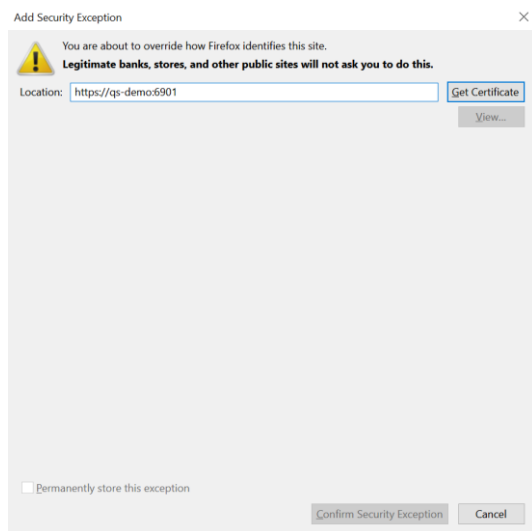


Press the “View Certificates...” button.



Now press button “Add Exception...”:

Enter **https://<domain>:6901** and press the “Get Certificate” button.



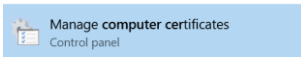
Press “Confirm Security Exception”.

10.2 Importing certificate of Qlik Sense

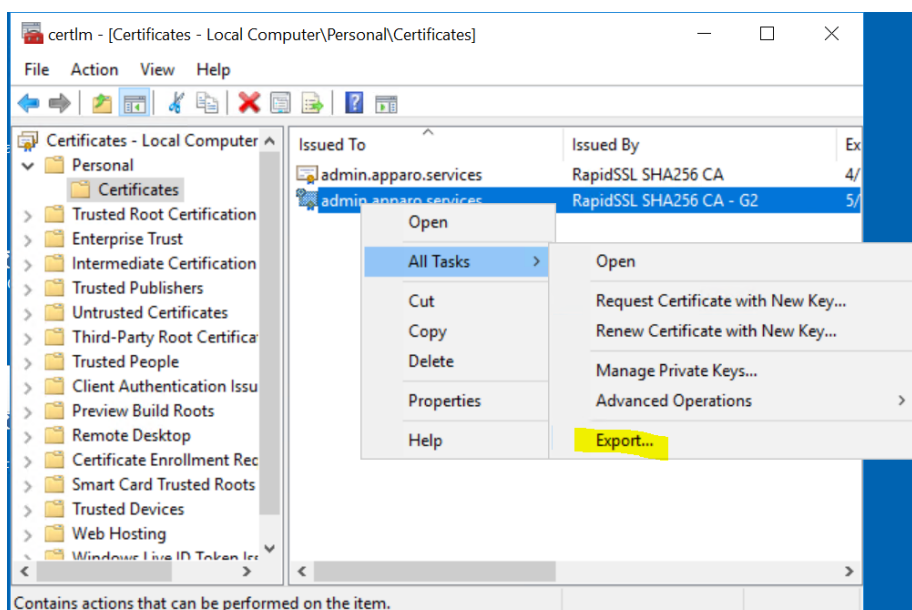
If your Qlik Sense environment is using a certificate then Apparo must use this certificate too. It must be imported into Apparo Configuration Manager.

10.2.1 Export of the Qlik Sense certificate from the certificate store

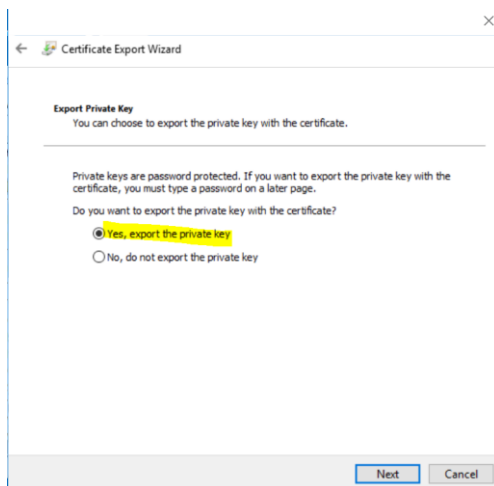
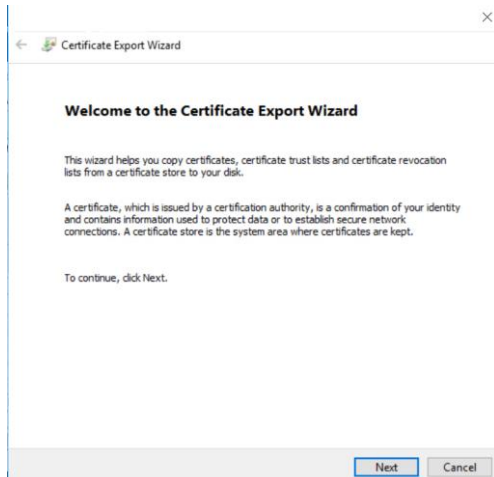
Best match



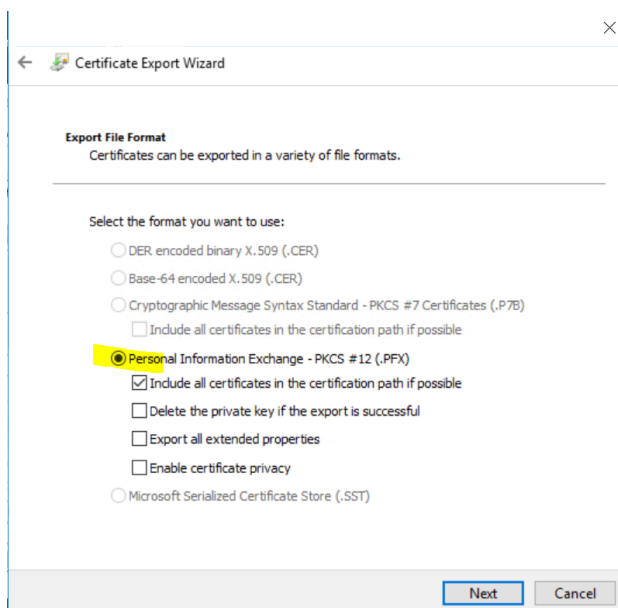
Search for “computer cert” and select “**Manage computer certification**”.

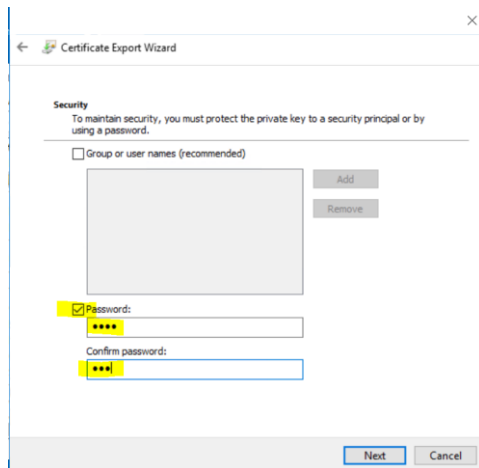


Search for you certificate, press right mouse button and select “Export”.



Export the key with the private key...





Certificate Export Wizard

Security
To maintain security, you must protect the private key to a security principal or by using a password.

☐ Group or user names (recommended)

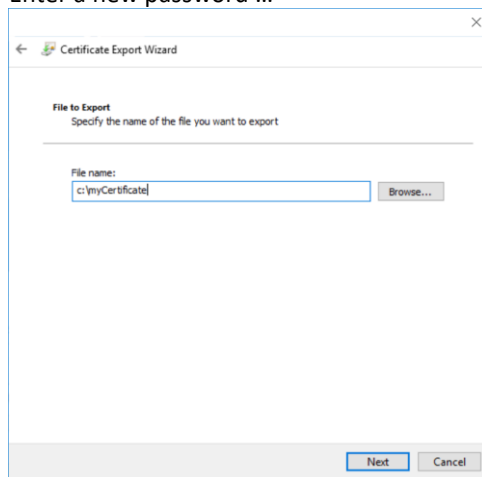
Add
Remove

☒ Password:

Confirm password:

Next Cancel

Enter a new password ...



Certificate Export Wizard

File to Export
Specify the name of the file you want to export

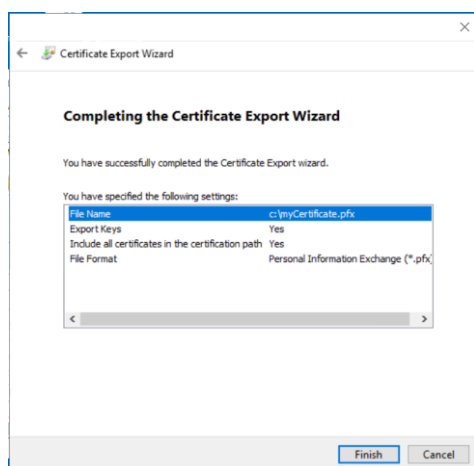
File name:

c:\myCertificate

Browse...

Next Cancel

.. and store it.



Certificate Export Wizard

Completing the Certificate Export Wizard

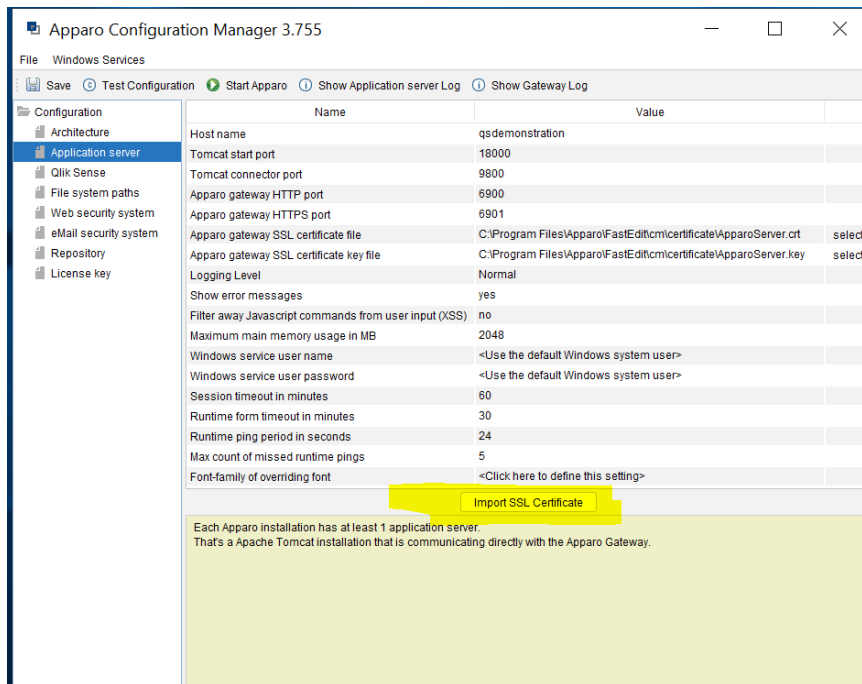
You have successfully completed the Certificate Export wizard.

You have specified the following settings:

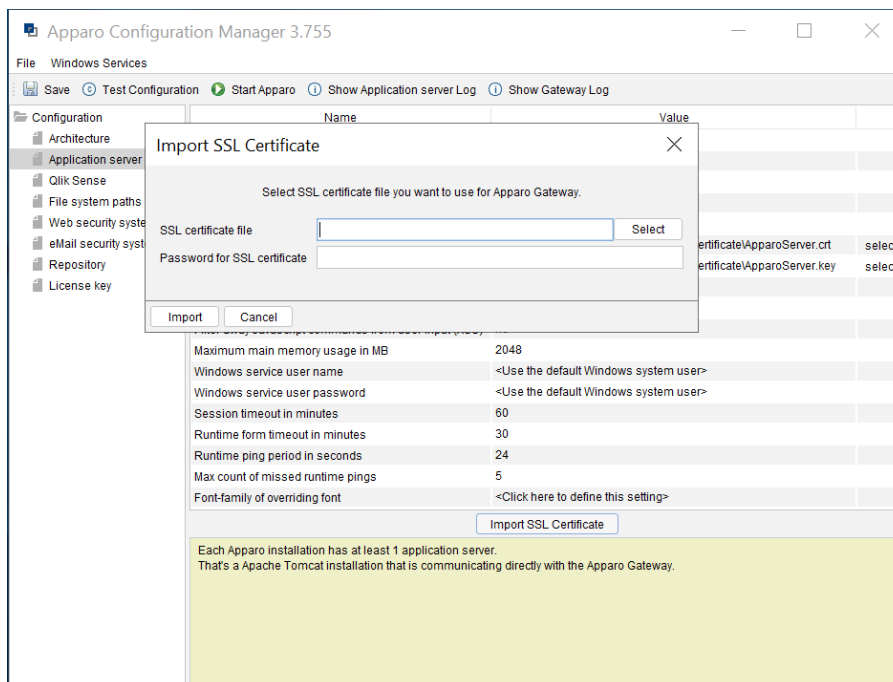
File Name	c:\myCertificate.pfx
Export Keys	Yes
Include all certificates in the certification path	Yes
File Format	Personal Information Exchange (*.pfx)

Finish Cancel

In the Apparo Configuration Manager select chapter “Application Server”...



... and press button “Import SSL Certificate”.



Select your certificate file, enter the password and press button “Import”.

After that please press the “Start Apparo” button for restarting Apparo.

11 Support

If you need support please write an eMail to:

support@apparo.solutions