

Installation Guide

Apparo Fast Edit

Multi Instance

For **Windows 2008 - 2019** / IBM Cognos BI

Version 3.2



1	<i>Prior to Installation</i>	4
1.1	Installation strategy	6
1.2	Architecture.....	7
2	<i>Preparation</i>	9
2.1	Creation of a database user for the Apparo repository	10
2.2	Defining the IBM Cognos Connection folder for the Apparo Designer entry	11
2.3	Preparing an already existing reverse proxy.....	12
3	<i>Installation of all Apparo application servers</i>	13
3.1	License agreement	15
3.2	Selecting the architecture	15
3.3	Defining the target file directory	16
3.4	Carrying out the installation	17
3.5	Installation finish	17
4	<i>Configuration of all Apparo application servers</i>	18
4.1	Architecture.....	21
4.2	Application server.....	21
4.3	IBM Cognos	22
4.4	File system paths	22
4.5	Web security system.....	23
4.6	eMail security system	23
4.7	Repository	24
4.8	License key	24
5	<i>Installation of all Apparo gatewayss</i>	25
5.1	License agreement	27
5.2	Architecture.....	27
5.3	Defining the target file directory	29
5.4	Carrying out the installation	30
5.5	Installation finish	30
6	<i>Configuration of all Apparo gateway</i>	31
6.1	Architecture.....	34
6.2	List of application servers.....	34
6.3	Configuration of the Microsoft Internet Information Server (IIS) 7 and higher.....	35
6.4	Using an own Application Pool	47
6.5	Configuration of the Apache web server	50

7	<i>Creating the Apparo Designer entry in IBM Cognos Connection</i>	52
8	<i>Installation clients</i>	55
9	<i>Configuration of an IBM Cognos BI environment with many dispatchers</i>	60
10	<i>Configuration Manager using command line</i>	61
11	<i>Import/Export definitions using command line</i>	62
11.1	Importing definitions	62
11.2	Exporting definitions.....	63
12	<i>Browser requirements</i>	64
12.1	Supported browsers and versions.....	64
12.2	Supported operating systems for client browsers	64
12.3	Additional settings for Microsoft Internet Explorer only.....	64
12.4	Additional settings for all browsers	65
13	<i>Support</i>	66

1 Prior to Installation

Installing Apparo Fast Edit can be done in 1 hour if you prepare your environment.

Please be aware of the following points before starting installation:

Hardware requirements

- File system about 800 MB
- Main Memory about 1000 MB

Supported operating systems

- Windows 2012 - 2019
- Windows 2008 R2
- Windows 2008 (64 Bit only)

Supported Cognos versions

- IBM Cognos BI 10.2 / 10.2.x
- IBM Cognos BI 10.1 / 10.1.1

Supported Web servers

- MS Internet Information Server (IIS), 32 and 64 Bit
- Apache 2.4.x and higher

Supported security systems

- All security systems that are currently in use for IBM Cognos

Supported virtual environments

- VMware ESX, ESXi
- VMware Player

Apparo Fast Edit must be installed using a **local Windows administrator** account.

IBM Cognos must be already installed and running.

1.1 Installation strategy

Following steps are necessary in this order:

1	Database preparation for Apparo repository Defining a new folder in IBM Cognos Connection for the Apparo Designer entry
2	Installation and configuration of all Apparo application servers
3	Installation and configuration of all Apparo gateway including web servers

1.2 Architecture

Possible Apparo Fast Edit architectures:

<p>1</p>	<p>Single Instance, your existing IBM Cognos environment is installed on <u>one computer only – that’s suitable for testing too.</u></p> <p>A „Single Instance“ is useful for small Cognos environments or test systems.</p>
<p>2</p>	<p>Multi Instance, one or more Apparo gateway and one or more Apparo application servers are installed on one or more hosts.</p> <p>A „Multi Instance“ is useful for better performance and high availability.</p>

This document is describing the installation and configuration process for a **Multi Instance.**

1	Preparation <ul style="list-style-type: none"> • Analysing environment • Creation of a database user for the Apparo repository • Defining the IBM Cognos Connection folder for the Fast Edit Designer entry • Defining the security group for all users that must be able to open the Apparo Designer • Defining a new IBM Cognos Connection entry for the Apparo Designer
2	Installation of all Apparo application servers
3	Configuration of all Apparo application servers Configuration using the Apparo Configuration Manager
4	Installation of all Apparo gateways
5	Configuration of all Apparo gateway Configuration the web servers and the Apparo gateway using the Apparo Configuration Manager
6	Creating the Apparo Designer entry in IBM Cognos Connection Creating the start entry of Apparo Designer
7	Installing clients

2 Preparation

1	Preparation <ul style="list-style-type: none"> • Analysing environment • Creation of a database user for the Apparo repository • Defining the IBM Cognos Connection folder for the Fast Edit Designer entry • Defining the security group for all users that must be able to open the Apparo Designer • Defining a new IBM Cognos Connection entry for the Apparo Designer
2	Installation of all Apparo application servers
3	Configuration of all Apparo application servers Configuration using the Apparo Configuration Manager
4	Installation of all Apparo gateways
5	Configuration Apparo gateway Configuration the web servers and the Apparo gateway using the Apparo Configuration Manager
6	Creating the Apparo Designer entry in IBM Cognos Connection Creating the start entry of Apparo Designer
7	Installing clients

2.1 Creation of a database user for the Apparo repository

Apparo Fast Edit requires a Database repository. In this repository all of your definitions are stored.

Following databases are supported:

- Oracle
- IBM DB/2 LUW
- MS SQL Server
- Internal database (for test and development systems)

This database user must be defined before starting the Apparo Fast Edit setup.

You can find a detail description in the document "Installation – creating database user".

Essential grants:

- The database user must be able to create database tables
- A Login with this user must be possible.

2.2 Defining the IBM Cognos Connection folder for the Apparo Designer entry

Create a new folder in IBM Cognos Connection in that you can define the Apparo designer entry later:

Specify a name and description - New Folder Wizard

Specify a name and location for this entry. You can also specify a description and screen tip.

Name:
Apparo Fast Edit

Description:

Screen tip:

Location:
Public Folders > Apparo Fast Edit
[Select another location...](#) [Select My Folders](#)

Cancel < Back Next > Finish

The searching path is important:

Set properties - Apparo Designer

General **Permissions**

Specify the properties for this entry.

Type: URL
Owner: Administrator
Contact: None

☐ Disable this entry
☐ Hide this entry

The name, screen tip and description

Language:
German

Name:
Apparo Designer

Screen tip:

URL:
Type a URL that contains an acceptable domain. [View acceptable domains](#)
/cognos8/cgi-bin/cognos.cgi?b_action=xts.run&m=portal/bridge.xts&

View the search path, ID and URL

Search path:
/content/folder[@name='Apparo Fast Edit']/URL[@name='Apparo Designer']

ID:
i61A2DBF799864FB5893AB6A6E6B707AE

Default action URL:
/cognos8/cgi-bin/cognos.cgi?b_action=xts.run&m=portal/bridge.xts&c_mode=post&backLink=/content/folder[@name='Apparo Fast Edit']&c_env=/portal/FastEditDesigner.xml

Close

2.3 Preparing an already existing reverse proxy

If the IBM Cognos system is accessible through a **reverse proxy server** then the folder **/KFE/**, e.g. <http://servername/KFE> must be allowed.

That means the administrator for this proxy server must be informed to add this URL to the useable list of URLs too.

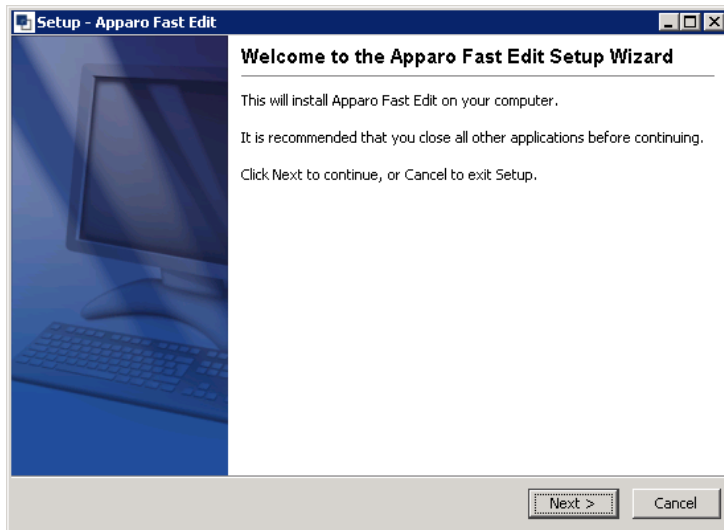
If the reverse proxy settings are not changed then Apparo Fast Edit can't run successfully.

3 Installation of all Apparo application servers

1	Preparation <ul style="list-style-type: none"> • Analysing environment • Creation of a database user for the Apparo repository • Defining the IBM Cognos Connection folder for the Apparo Designer entry • Defining a new IBM Cognos Connection entry for the Apparo Designer
2	Installation of all Apparo application servers
3	Configuration of all Apparo application servers Configuration using the Apparo Configuration Manager
4	Installation of all Apparo gateways
5	Configuration of all Apparo gateway Configuration the web servers and the Apparo gateway using the Apparo Configuration Manager
6	Creating the Apparo Designer entry in IBM Cognos Connection Creating the start entry of Apparo Designer
7	Installing clients

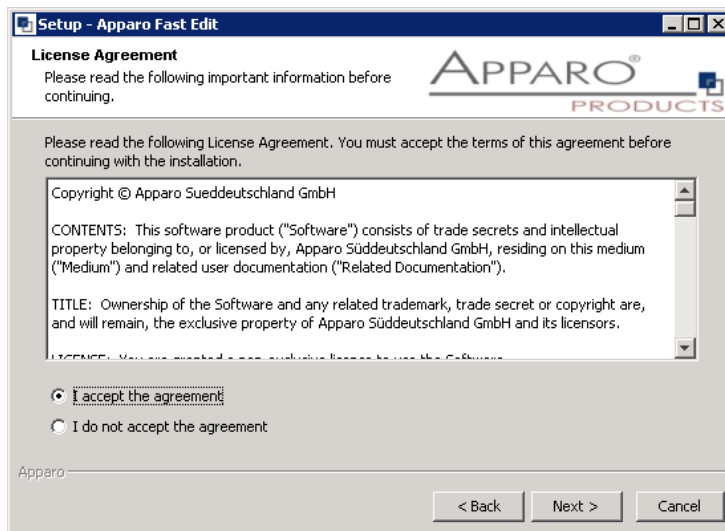
Start the Installation by execute the file

FastEdit3.2.x.x_yyy_win64_tomcat_cognos.exe



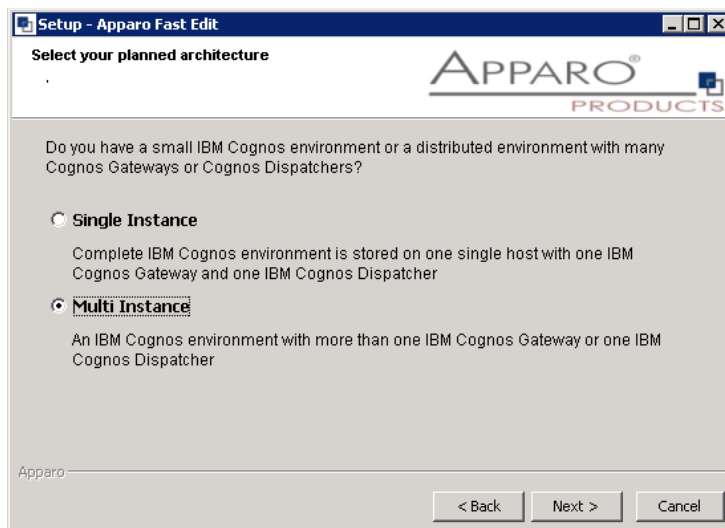
Confirm the beginning of the installation by clicking „**Next**“.

3.1 License agreement



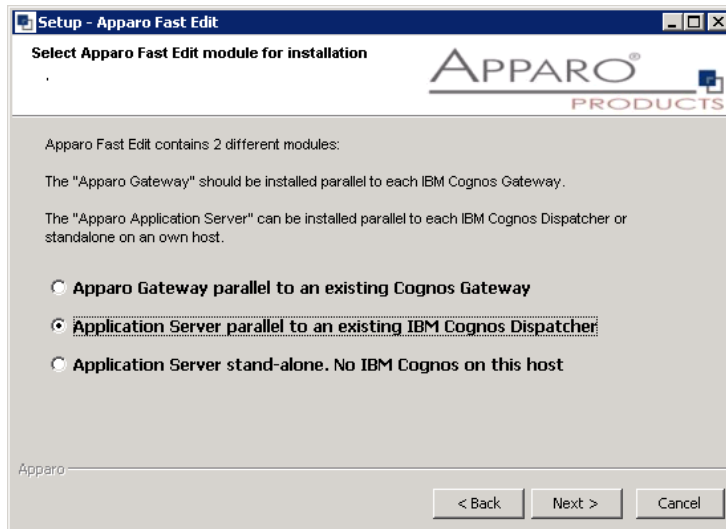
Read and confirm the license agreement by clicking „**Next**“.

3.2 Selecting the architecture



Select “**Multi Instance**” and choose „**Next**>“.

Now it's the time to choose the right Apparo application server.

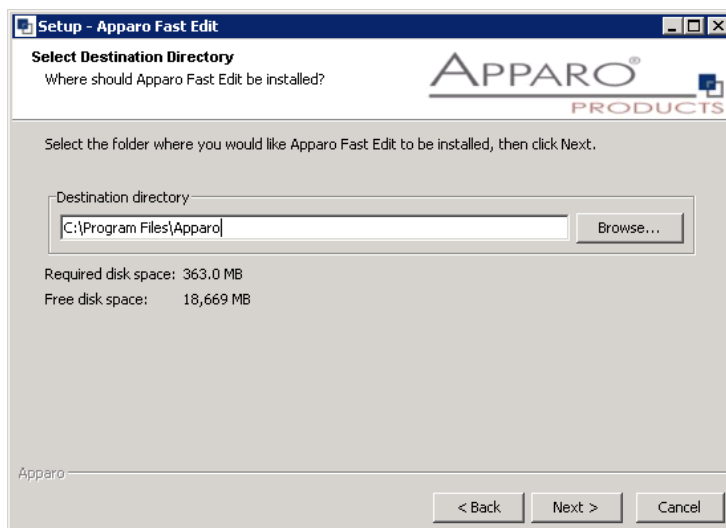


Select

- **Apparo application server parallel to an existing IBM Cognos Dispatcher**
If you want to install this application server parallel to an existing IBM Cognos dispatcher
- **Apparo application server standalone**
If you want to install this application server on a host without an IBM Cognos dispatcher

Please select “Apparo application server parallel to an existing IBM Cognos Dispatcher” and choose „Next>”.

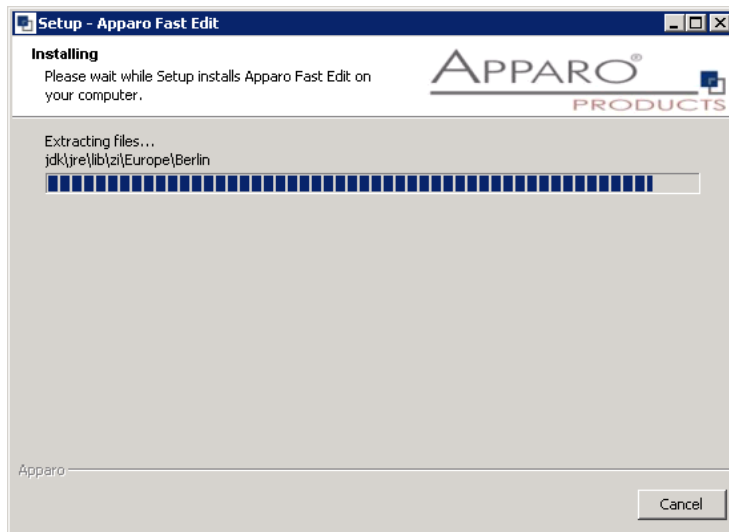
3.3 Defining the target file directory



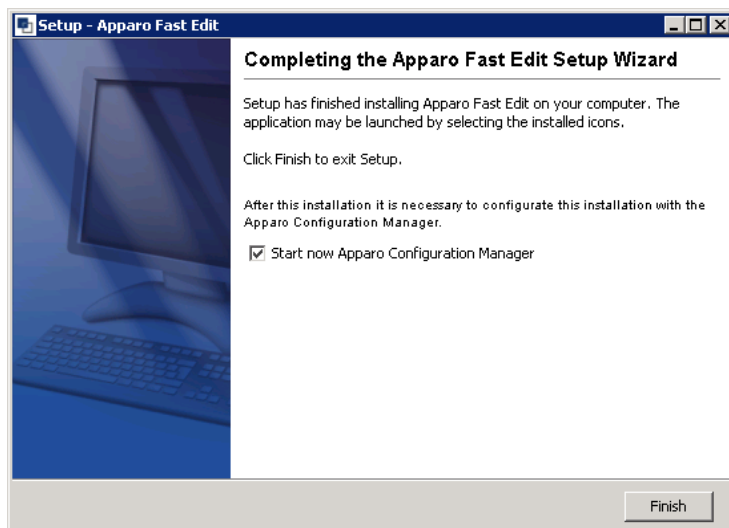
Please define the path and choose „Install”.

3.4 Carrying out the installation

Finally the installation of Apparo Fast Edit with the selected architecture will start.
After that this installation must be configured with the **Apparo Configuration Manager**.



3.5 Installation finish



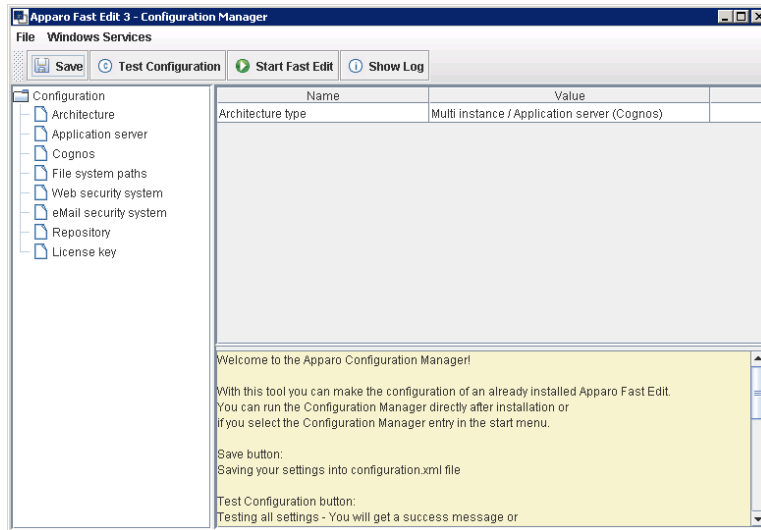
Now it's time to **configure** the installation with the **Apparo Configuration Manager**.

Click „**Finish**“ for completing the installation and to start the configuration.

4 Configuration of all Apparo application servers

1	Preparation <ul style="list-style-type: none"> • Analysing environment • Creation of a database user for the Apparo repository • Defining the IBM Cognos Connection folder for the Apparo Designer entry • Defining a new IBM Cognos Connection entry for the Apparo Designer
2	Installation of all Apparo application servers
3	Configuration of all Apparo application servers Configuration using the Apparo Configuration Manager
4	Installation of all Apparo gateways
5	Configuration of all Apparo gateway Configuration the web servers and the Apparo gateway using the Apparo Configuration Manager
6	Creating the Apparo Designer entry in IBM Cognos Connection Creating the start entry of Apparo Designer
7	Installing clients

With the **Apparo Configuration Manager** you are able to configure the already installed Apparo application server.



The settings are grouped into chapters (left side).

For each setting you can read a helpful description text in the yellow box.

To do list:

1	Define all settings
2	Press the „Test Configuration“ button for testing all settings
3	Press the „ <u>Start Fast Edit</u> “ button for starting the application server
4	<p>You can see the log file of the application server with pressing „<u>Show Log</u>“</p> <p>If the application server is running then you can see in the log:</p> <pre> 2019-11-07 02:37:41,831 INFO com +++++ + Apparo Fast Edit 3.2.x.0 (Build nnn) was successfully started at 07.11.2019 02:37:41 + +++++ </pre>

Test of an Apparo application servers without using an Apparo gateway:

<http://<applicationserver:<startport>/KFE/pages/apptest.jsf>

Example: <http://appserver1:18000/KFE/pages/apptest.jsf>

With this URL you can test if the Apparo application server is running fine or has problems.

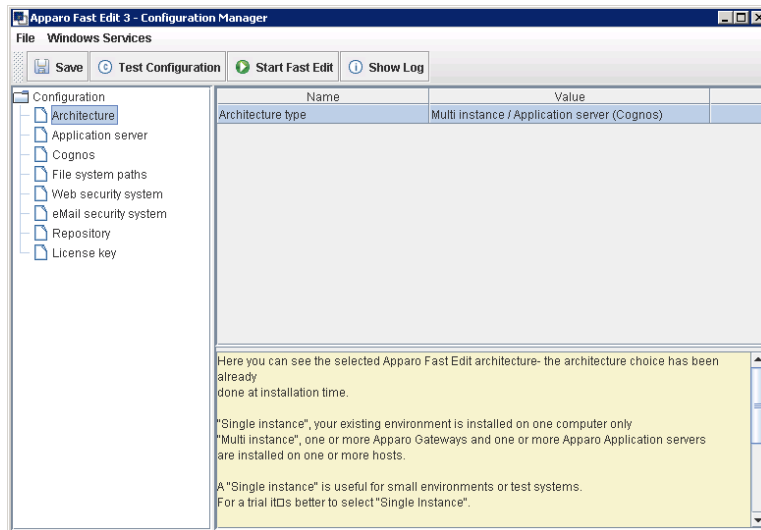
The configuration of Apparo Fast Edit is stored in file configuration.xml
in file directory [APPARO_HOME]\FastEdit\cm .

If you plan a parallel/cluster system then it's sometimes comfortable to copy this file into the target system.

If you open the Apparo Configuration Manager then you will see the same configuration settings like of your source system and it's possible to change it comfortable.

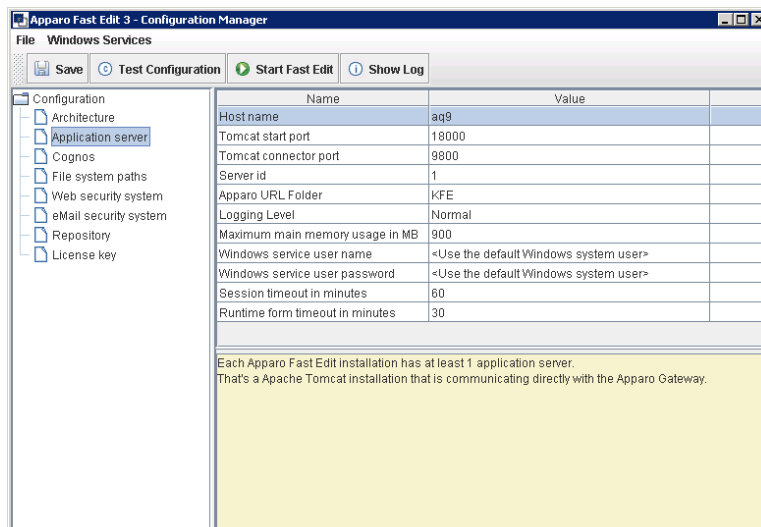
4.1 Architecture

In this section of the Configuration Managers you can find the selected Fast Edit architecture. This architecture was defined at installation time and is not changeable now.



4.2 Application server

Settings for the application server:

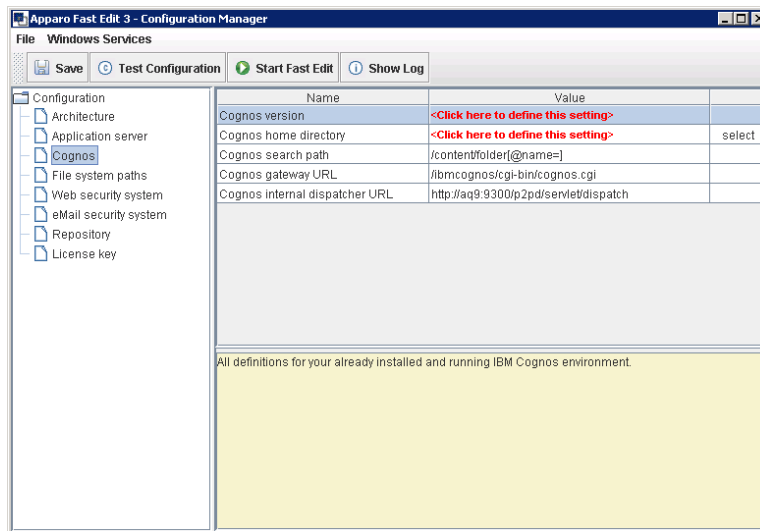


The setting **Server ID** is important in a multi-application environment. Each application server has an unique ID starting with 1, then 2,3,4...

This Server ID must be used later in the **Apparo gateway settings too**.

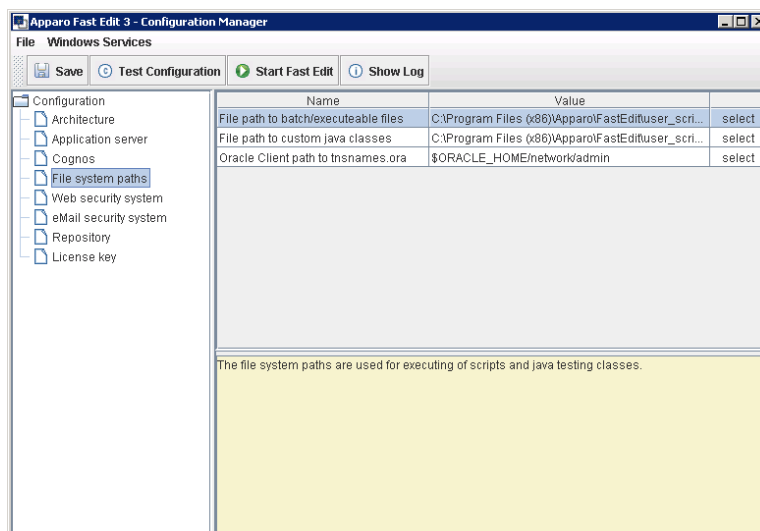
4.3 IBM Cognos

Settings for the already installed Cognos environment:



4.4 File system paths

File directories for the server side scripts and user defined Java classes:



It is important that the Windows system user or the user that is running the Windows Service of Apparo Fast Edit has write and read access to these file directories.

Hint: If you use many application servers then all application server must use the same file directory.

Therefore it's possible to use Windows shares, e.g. [\\server1\scripts](#)

If using shares it's necessary that the Windows service of Apparo Fast Edit **must not use a local system account.**

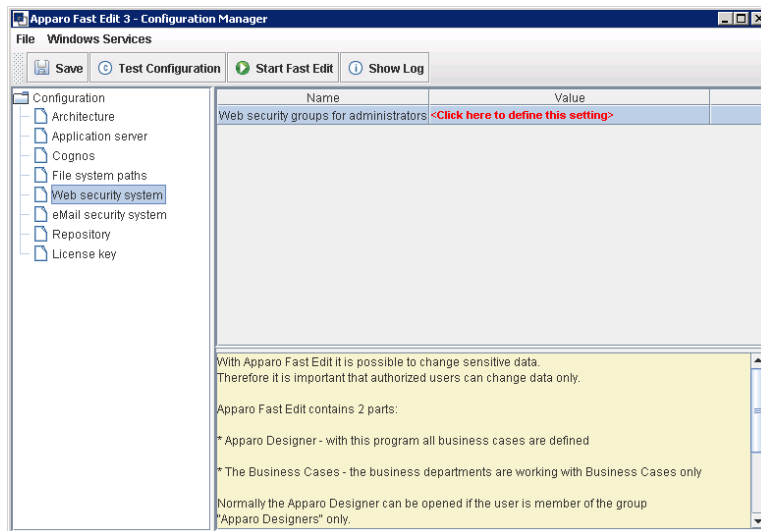
Using a Windows Administrator account is for example a solution.

4.5 Web security system

All settings for the used security system:

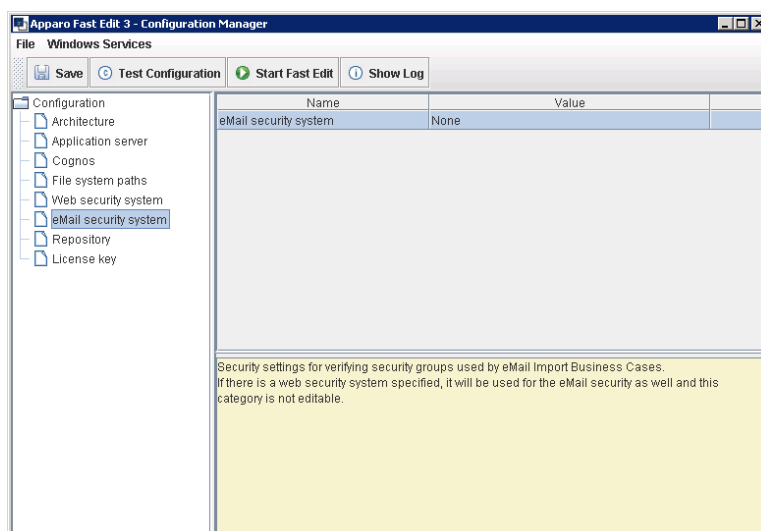
In this chapter you can define the security group of all users that is necessary to be able to open the Apparo Designer with full access.

If there is no security group defined then all users can open the Apparo Designer with full access.



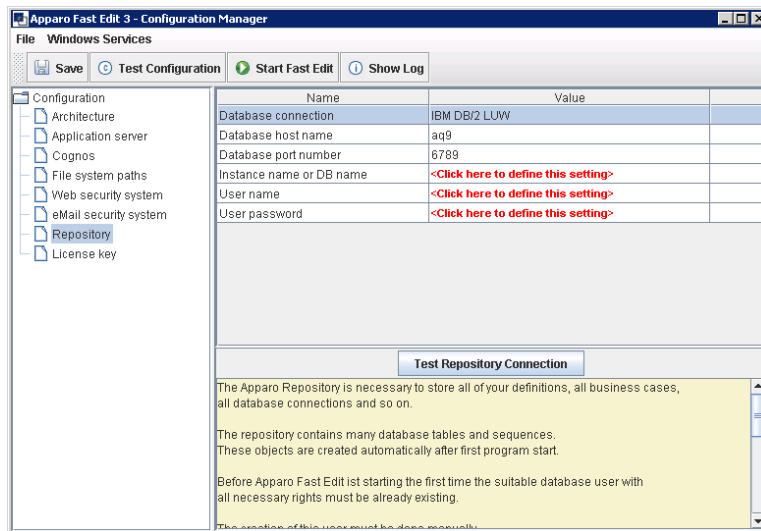
4.6 eMail security system

This security system is used by Business Cases of type “eMail Import Business Cases”



4.7 Repository

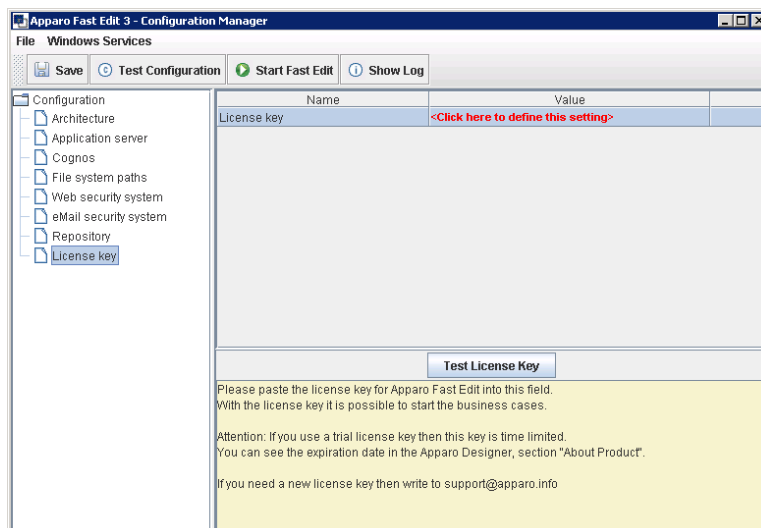
The database connection to the Apparo repository:



4.8 License key

In this section you can add & change the license key. This key is necessary to run Apparo Fast Edit.

Hint: A license key for a version 3.1 is not valid anymore.

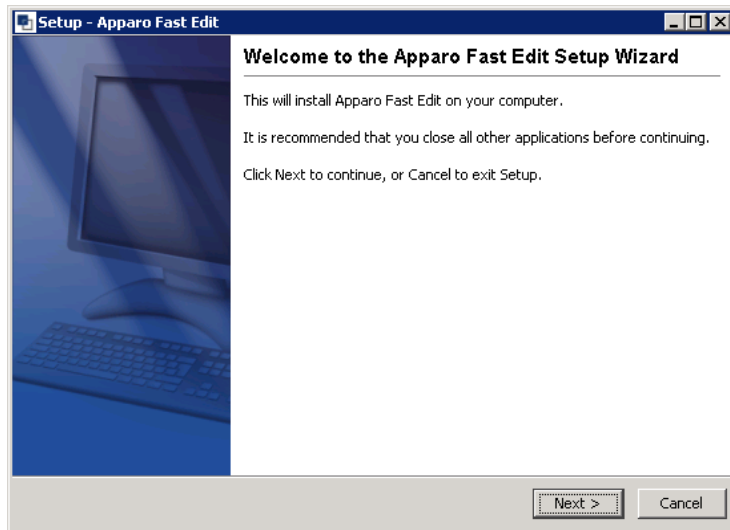


5 Installation of all Apparo gatewayss

1	Preparation <ul style="list-style-type: none"> • Analysing environment • Creation of a database user for the Apparo repository • Defining the IBM Cognos Connection folder for the Apparo Designer entry • Defining a new IBM Cognos Connection entry for the Apparo Designer
2	Installation of all Apparo application servers
3	Configuration of all Apparo application servers Configuration using the Apparo Configuration Manager
4	Installation of all Apparo gateways
5	Configuration of all Apparo gateway Configuration the web servers and the Apparo gateway using the Apparo Configuration Manager
6	Creating the Apparo Designer entry in IBM Cognos Connection Creating the start entry of Apparo Designer
7	Installing languages

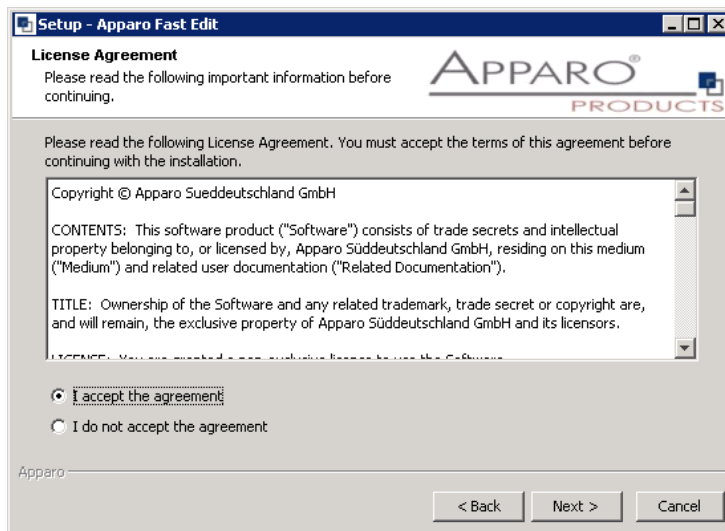
Start the Installation by execute the file for a Windows 64 bit environment:

FastEdit3.2.x.x_yyy_win64_tomcat_cognos.exe

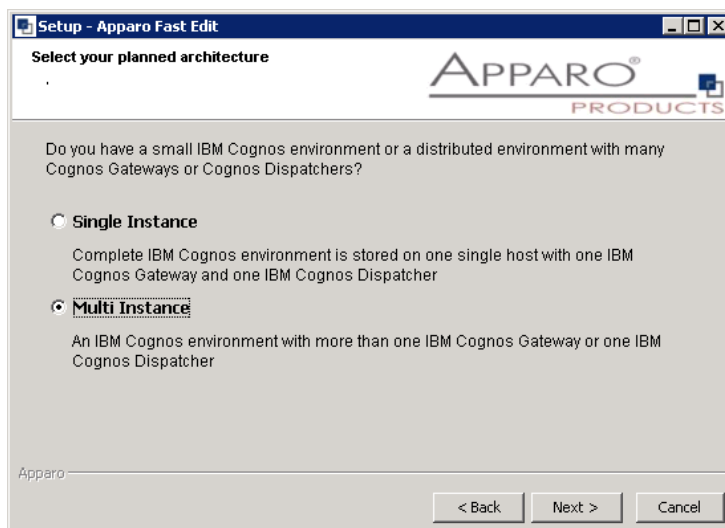


Confirm the beginning of the installation by clicking „**Next**“.

5.1 License agreement

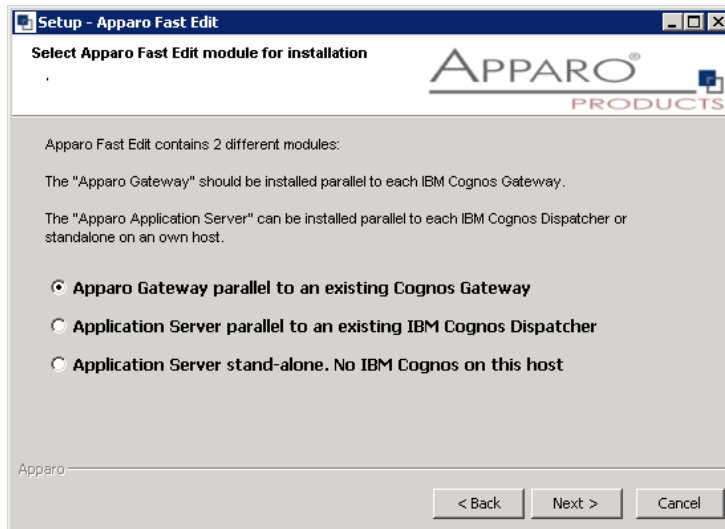


5.2 Architecture



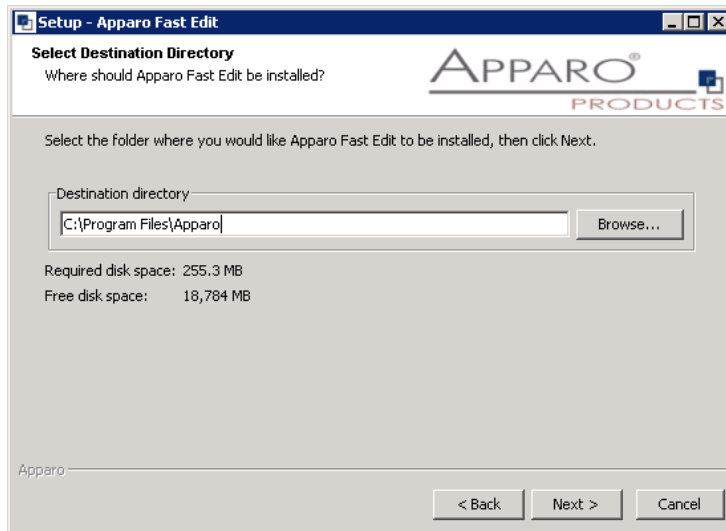
Select **"Multi Instance"** and choose **"Next>"**.

Now it's the time to choose the entry for the **Apparo gateway**.



Select **Apparo gateway** and choose „**Next>**“.

5.3 Defining the target file directory



The default path is

C:\Program Files\Apparo

Please define the path and choose „**Next**“.

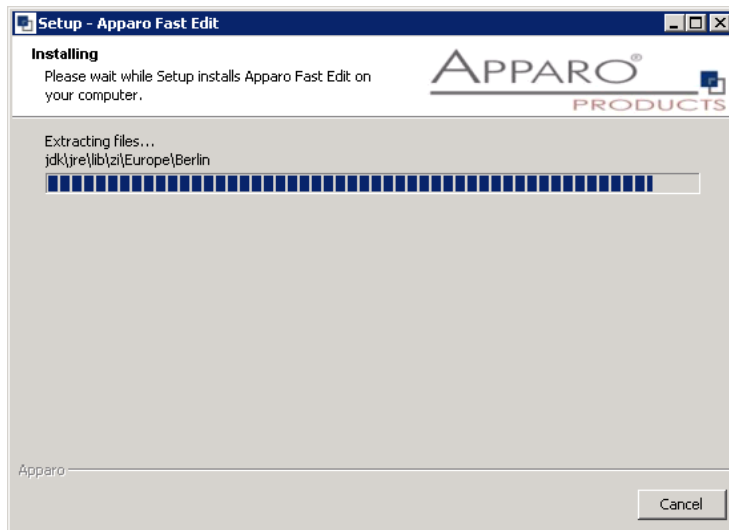
The configuration of Apparo Fast Edit is stored in file configuration.xml in file directory [APPARO_HOME]\FastEdit\cm .

Hint:

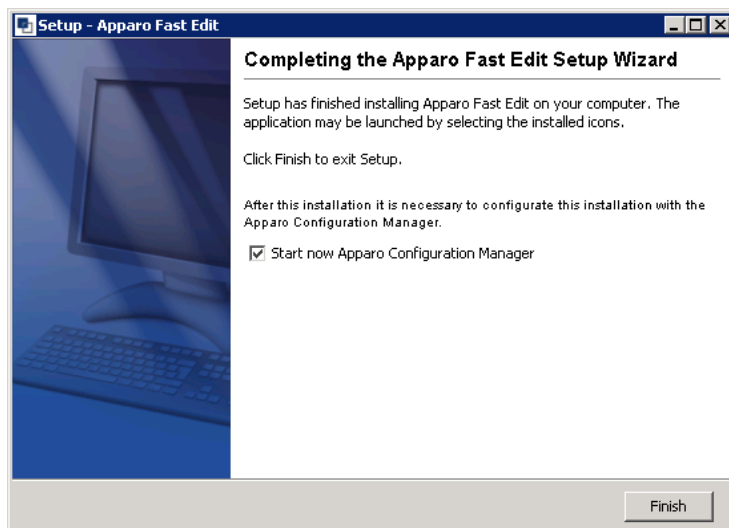
If you want to install the Apparo gateway parallel to the same server like an Apparo application server then you must use another target file directory, e.g. c:\Program Files\ApparoGateway

5.4 Carrying out the installation

Finally the installation of Apparo Fast Edit with the selected architecture will start.
After that this installation must be configured with the **Apparo Configuration Manager**.



5.5 Installation finish



Now it's time to **configure** the installation with the **Apparo Configuration Manager**.

Click „**Finish**“ for completing the installation and to start the configuration.

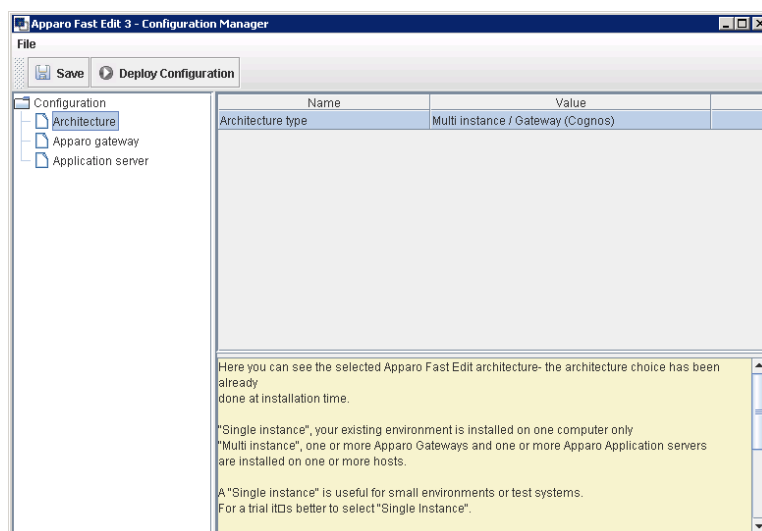
6 Configuration of all Apparo gateway

1	Preparation <ul style="list-style-type: none"> Analysing environment Creation of a database user for the Apparo repository Defining the IBM Cognos Connection folder for the Apparo Designer entry Defining a new IBM Cognos Connection entry for the Apparo Designer
2	Installation of all Apparo application servers
3	Configuration of all Apparo application servers Configuration using the Apparo Configuration Manager
4	Installation of all Apparo gateways
5	Configuration of all Apparo gateway Configuration the web servers and the Apparo gateway using the Apparo Configuration Manager
6	Creating the Apparo Designer entry in IBM Cognos Connection Creating the start entry of Apparo Designer
7	Installing clients Installing the languages in Apparo Designer

Important

Before starting of the Apparo configuration it is important that the configuration of all Apparo application servers with the Apparo Configuration Manager is successfully finished and the application servers are already running with pressing Button "Start Fast Edit".

With the **Apparo Configuration Manager** you are able to configure the already installed Apparo gateway.



The settings are grouped into chapters (left side).

For each setting you can read a helpful description text in the yellow box.

To do list:

- | | |
|---|--|
| 1 | Define all settings. |
| 2 | Press the „Deploy Configuration“ button for deploying. |
| 3 | Press the „Save“ button for storing the settings. |

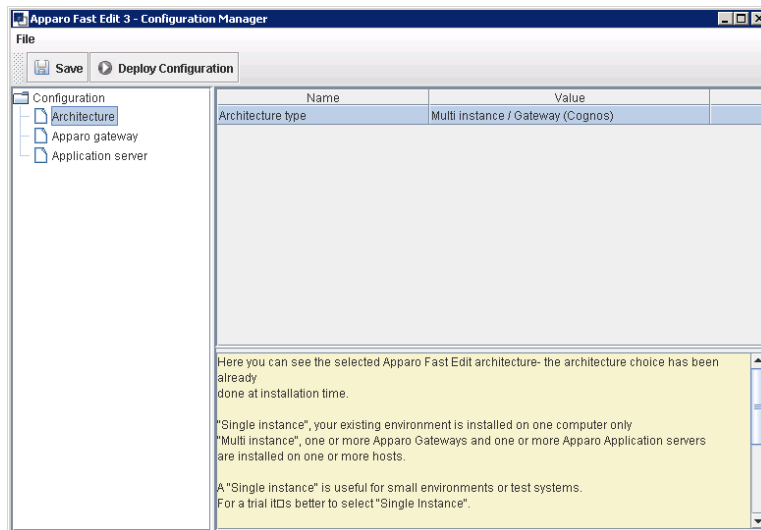
**The configuration of Apparo Fast Edit is stored in file configuration.xml
in file directory [APPARO_HOME]\FastEdit\cm .**

If you plan a parallel/cluster system then it's sometimes comfortable to copy this file into the target system.

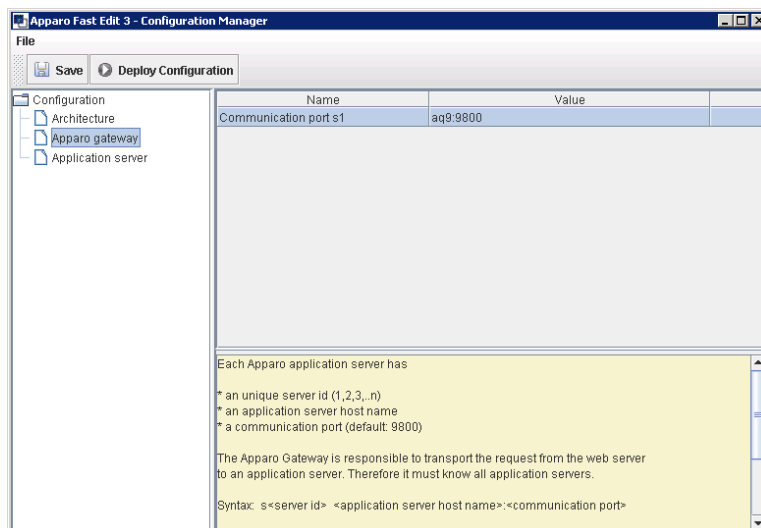
If you open the Apparo Configuration Manager then you will see the same configuration settings like of your source system and it's possible to change it comfortable.

6.1 Architecture

In this section of the Configuration Managers you can find the selected Apparo Fast Edit architecture. This architecture was defined at installation time and is not changeable now.



6.2 List of application servers



You can add an Apparo application server entry with pressing the right mouse button.

The setting **Server ID** is important in a multi-application environment. Each application server has an unique ID starting with 1, then 2, 3, 4, ...

This Server ID must be used in the **Apparo application settings too**.

6.3 Configuration of the Microsoft Internet Information Server (IIS) 7 and higher

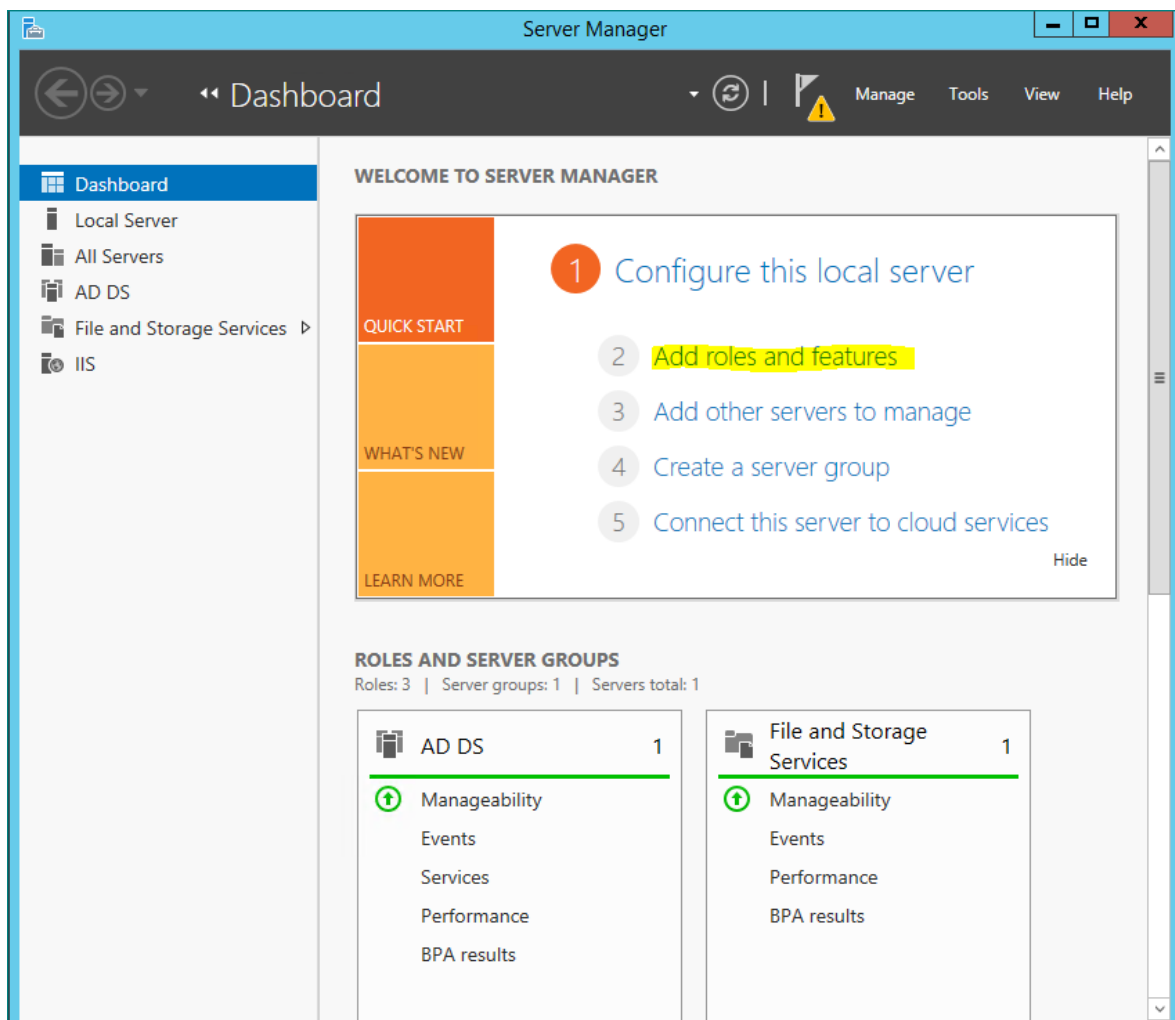
This chapter is describing the configuration of IIS 7 and higher.

The IIS must support ISAPI modules. This enhancement must be installed first.

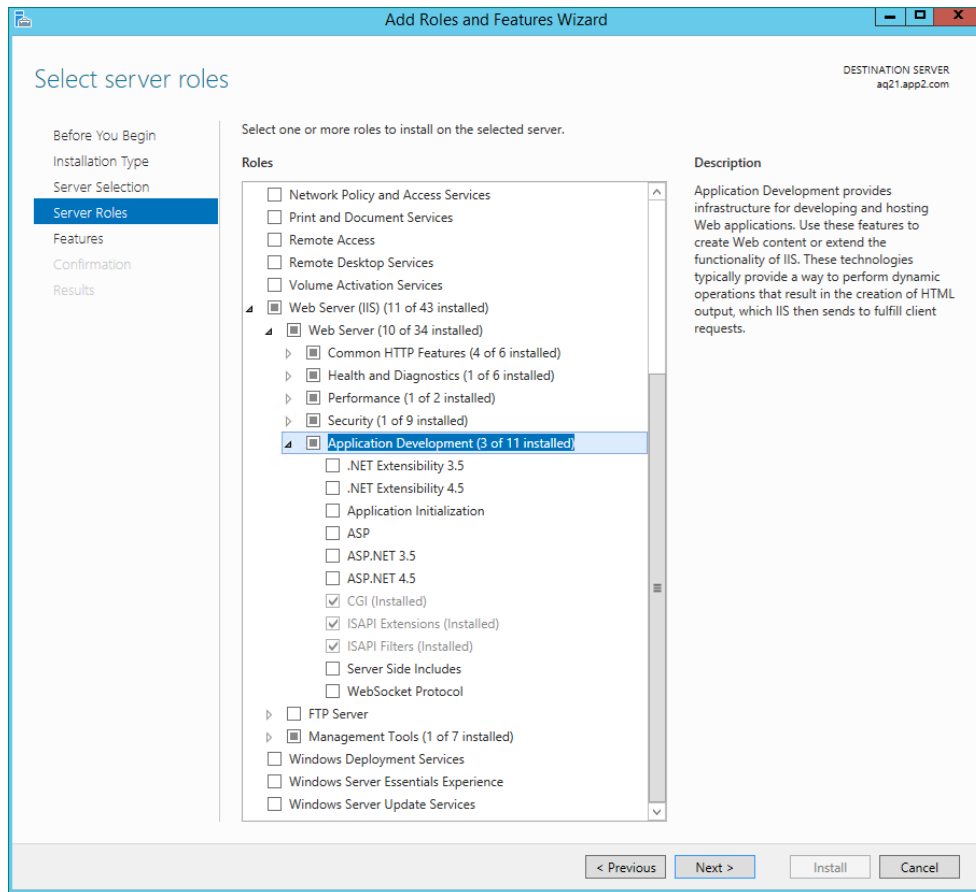
Please start the **Server Manager** of the Windows operating system.

Select:

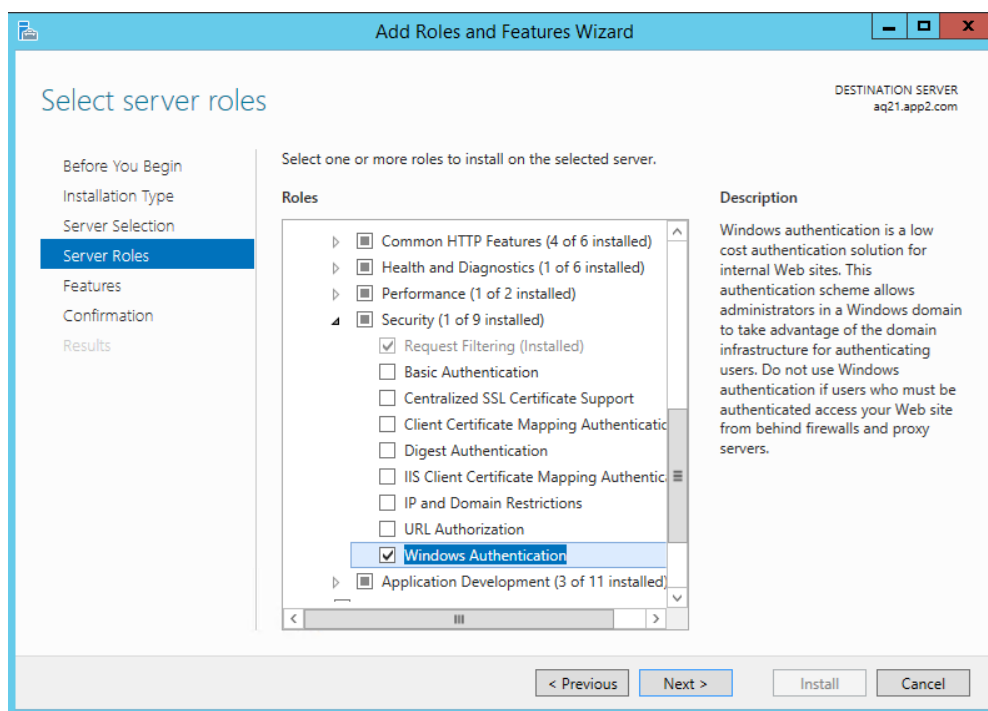
- Add roles and feature:



Please check if selections **ISAPI Extensions** and **ISAPI Filters** are enabled.



Please enable in chapter „**Security**“ the feature „**Windows Authentication**“:



After that the IIS is ready for the next installation tasks.

Following steps are necessary:

1	A new virtual directory apparo must show to file directory „cgi-bin“
2	Allowing ISAPI filter
3	Installation of the ISAPI filter with the name apparo using IIS_fastedit.dll

Important

Before starting of the Apparo gateway installation it is important that the configuration with the Apparo Configuration Manager is successfully finished and the application server is already running with pressing button “Start Fast Edit”.

The IIS configuration guide is also available as tutorial video in our YouTube channel:

<http://movies.apparo.solutions>

1

A new virtual directory apparo must show to file directory „cgi-bin“

**You must use a local Windows Administrator account for installation.
Using a domain account with administrator role is not always working correctly.**

Open the file directory [APPARO_HOME]\FastEdit\cgi-bin

You see 2 files:

- IIS_fastedit_32bit.dll
- IIS_fastedit_64bit.dll

If your operating system is running with 32 bit then use first file.

You can use an own Application Pool or the DefaultAppPool for Apparo Fast Edit.

You must use the same Application Pool for Cognos, Apparo and Default Web Site.

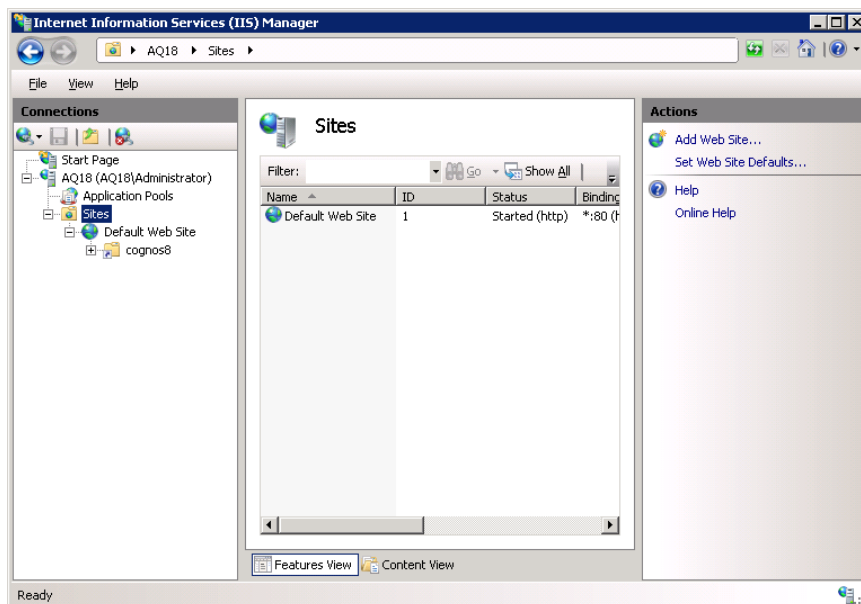
If your operating system is using 64 bit then check if this pool is accepting 32bit applications (see setting “Enable 32bit Applications”) too. If yes then use the file “IIS_fastedit_32bit.dll”.

If not then use the “IIS_fastedit_64bit.dll”.

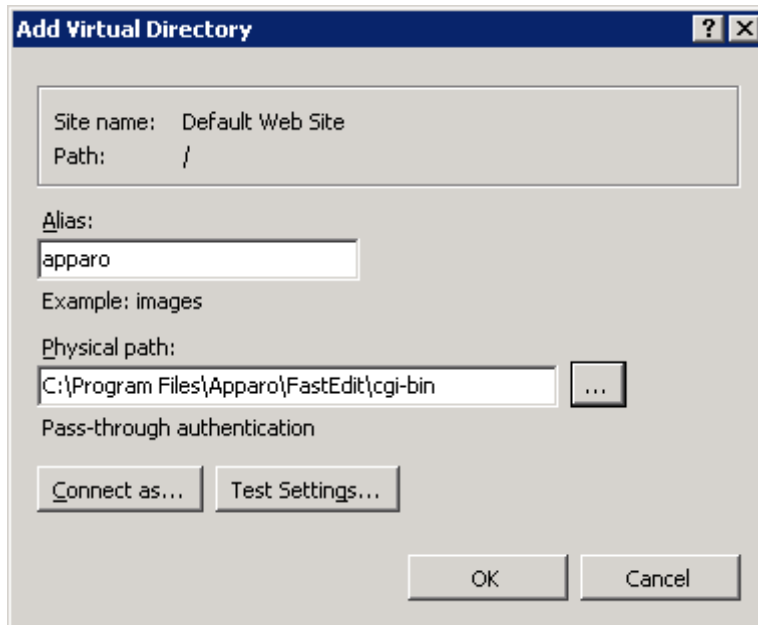
Copy the right file to “IIS_fastedit.dll” into the same cgi-bin file directory.

Next step:

Open the IIS console:

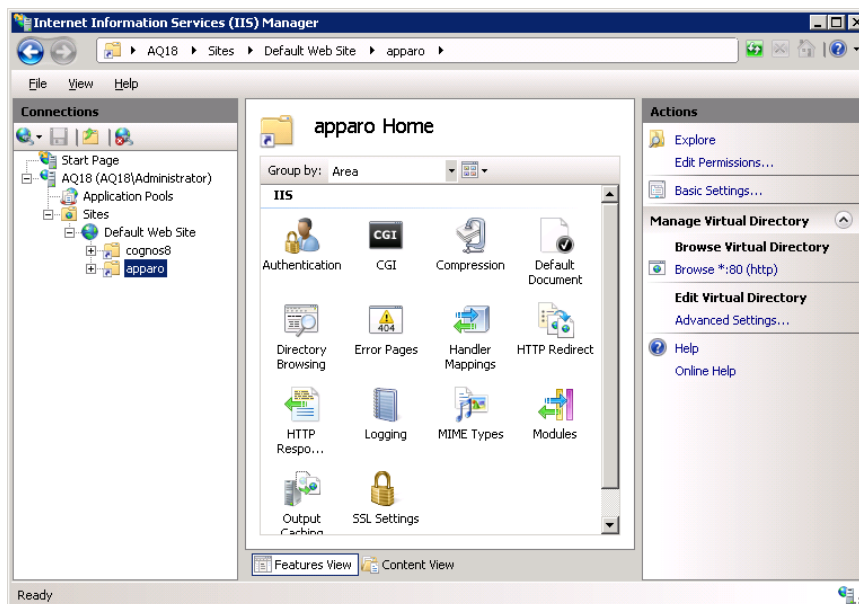


Choose the „Default Web Site“, press right mouse button and select „Add virtual Directory“.



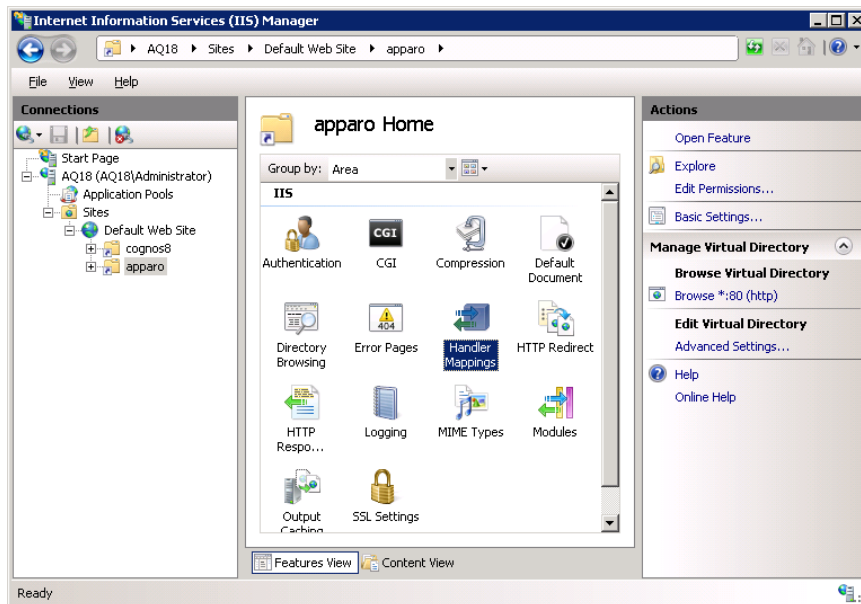
Enter the alias “**apparo**” and the path to the cgi-bin file directory of Apparo Fast Edit.

Press „**OK**“

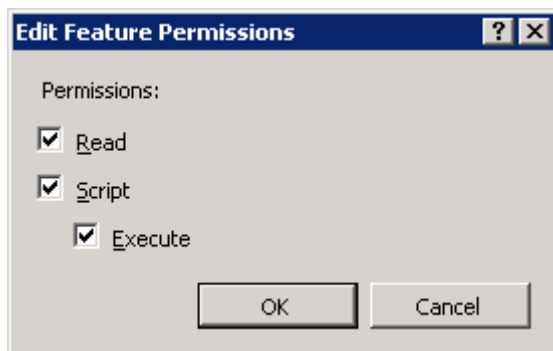


This directory must have **executable** rights:

Select “**apparo**” folder again and double-click “**Handler Mappings**”



Select on the right side “**Edit Feature Permissions...**” and enable “**Execute**”.



Press “**OK**”.

Defining the mapping:

Choose the new created virtual directory „**apparo**“.



Handler
Mappings

Double click - now you can define a new mapping.

Select entry „**Add Module Mapping...**“ from the right side.

Now you see a new window for the mapping definition.

Please enter the necessary entries:

Add Module Mapping

Request path:
*.dll
Example: *.bas, wsvc.axd

Module:
IsapiModule

Executable (optional):
C:\Program Files\Apparo\FastEdit\cgi-bin\IIS_fastedit.dll ...

Name:
apparo

Request Restrictions...

OK Cancel

„**Executable**“ must contain the valid path to the used ISAPI file IIS_fastedit.dll.

Now press „**Ok**“ and

Add Module Mapping

Do you want to allow this ISAPI extension? Click "Yes" to add the extension with an "Allowed" entry to the ISAPI and CGI Restrictions list or to update an existing extension entry to "Allowed" in the ISAPI and CGI Restrictions list.

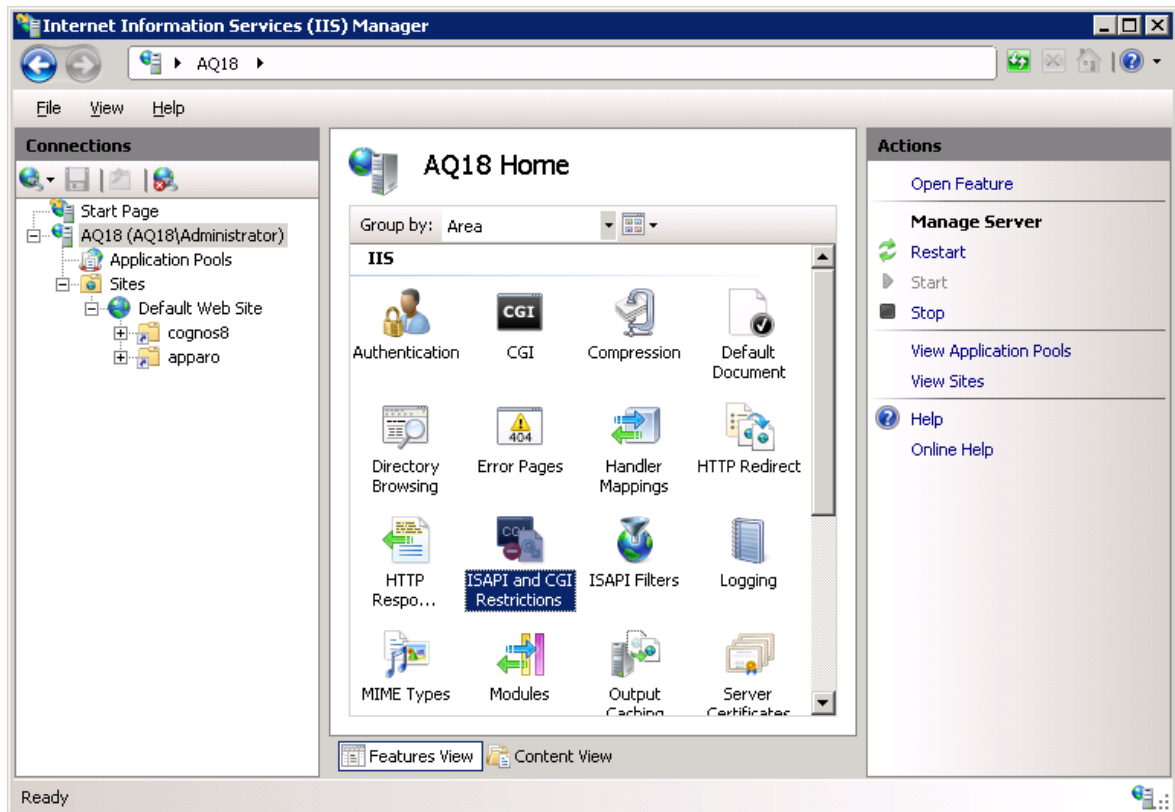
Yes No Cancel

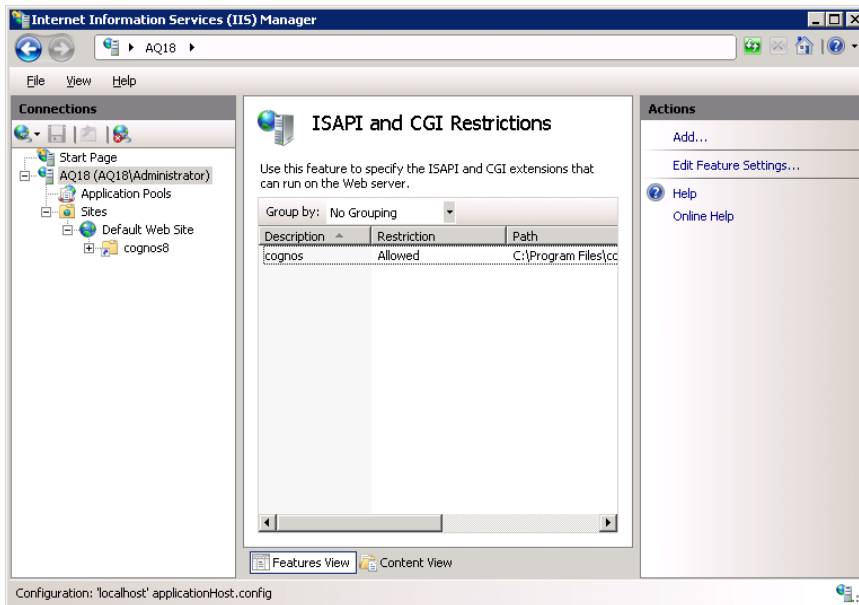
then „**Yes**“.

2

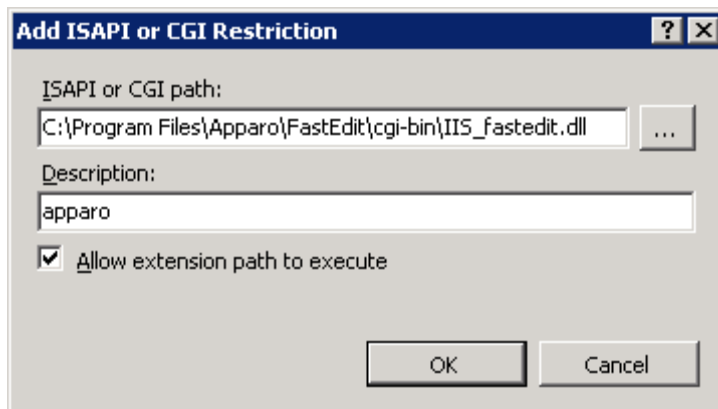
Allowing ISAPI filter

Select the server name entry (here: AQ18) and double click “ISAPI and CGI Restrictions”:





Press “Add...” and input:

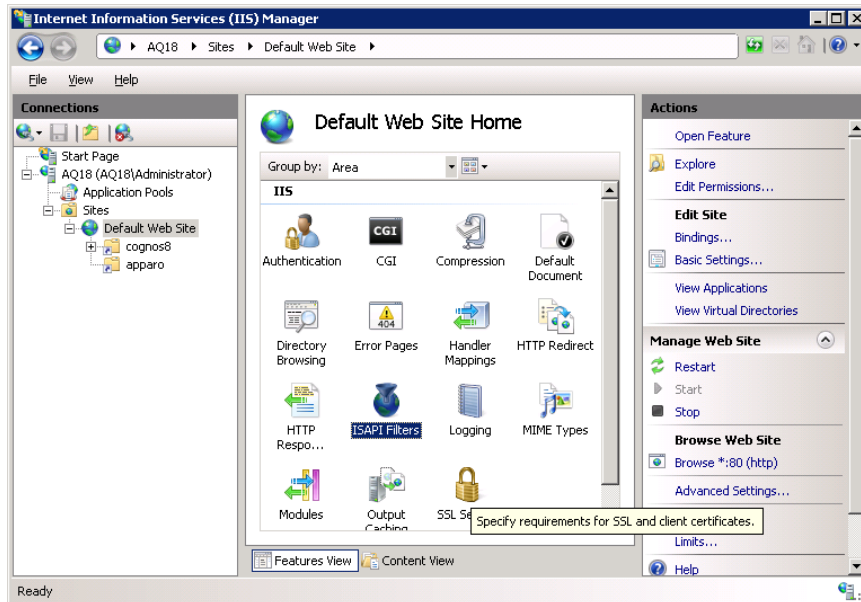


Enable “Allow extension path to execute” and press “OK”.

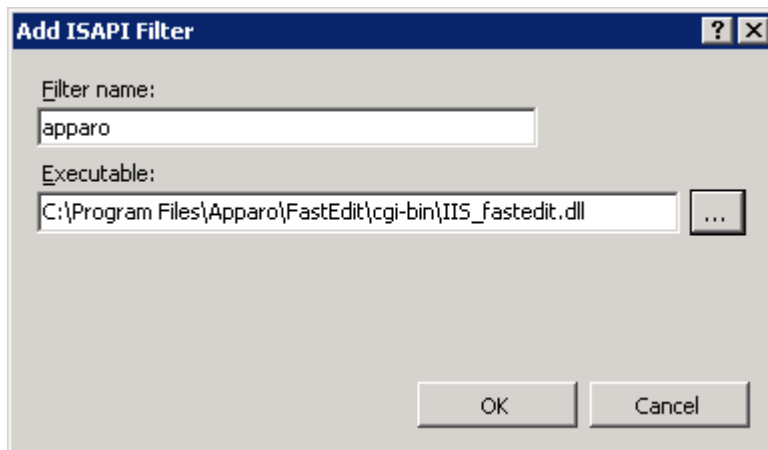
3

Installation of the ISAPI filter with the name apparo using IIS_fastedit.dll

Select again “Default Web Site” and double click “ISAPI Filters”:



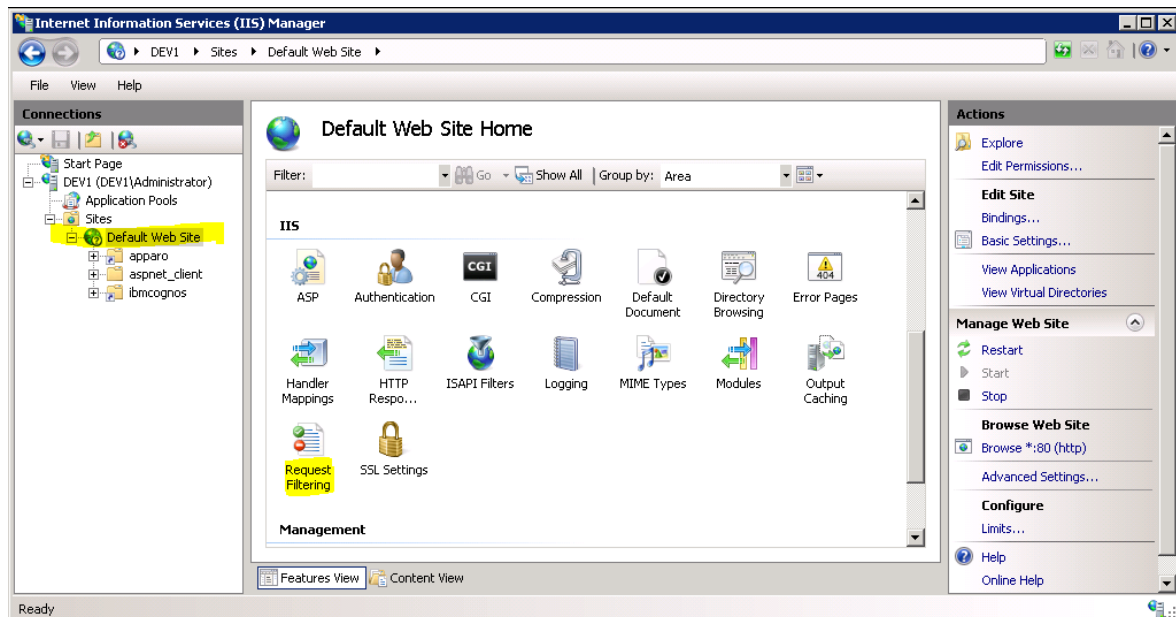
Press “Add...”



Input the filter name „**apparo**“ and select the **IIS_fastedit.dll** in file directory „[APPARO_HOME]\FastEdit\cgi-bin“

Press “OK” .

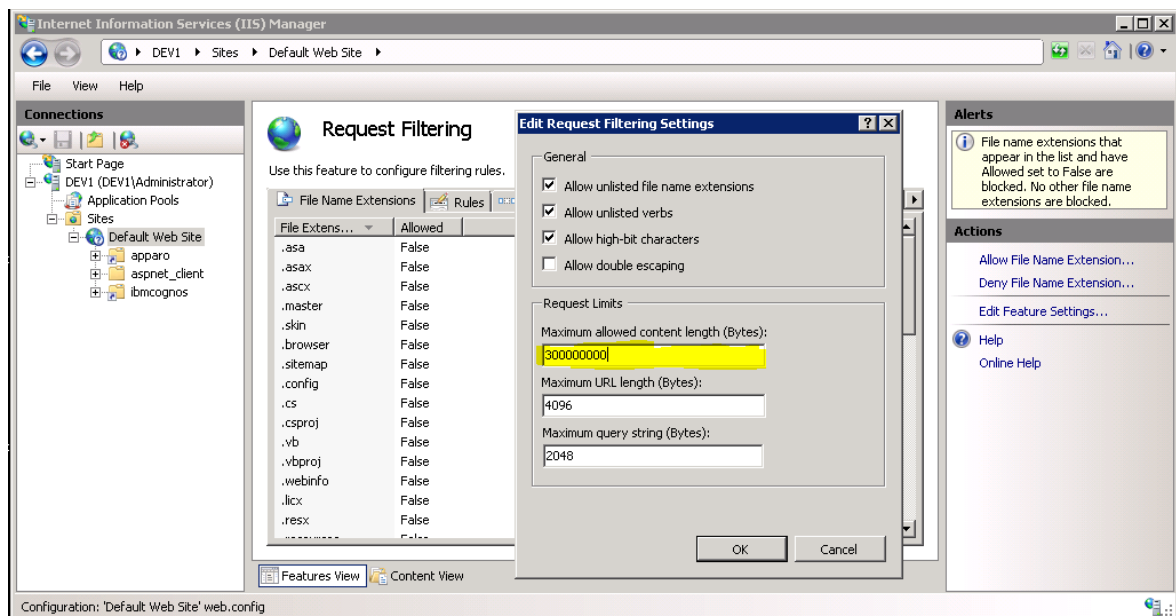
Resizing the upload limit



Select "Default Web Site" in the tree view, left side.

Select „Request Filtering“ with double-click.

Select "Edit Feature Settings" on right side.



Change value of Maximum allowed content length (Bytes) to 300 000 000 (= 300 MB).

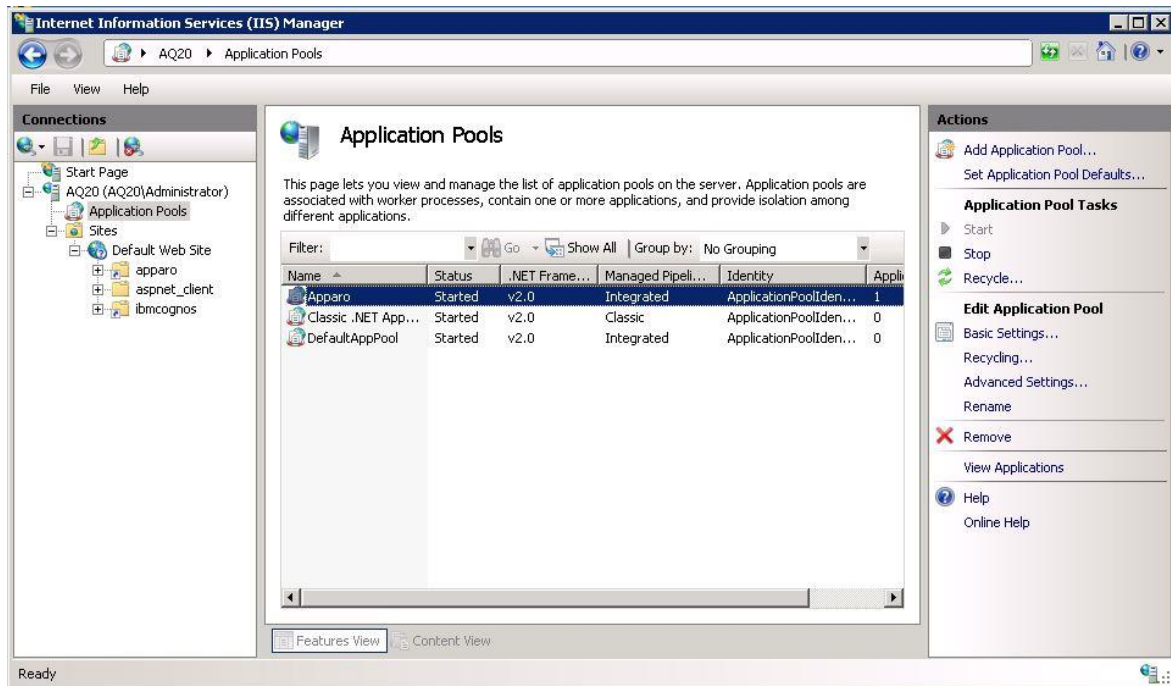
Now the installation of the Apparo gateway is successfully finished.

If you can't see this message then:

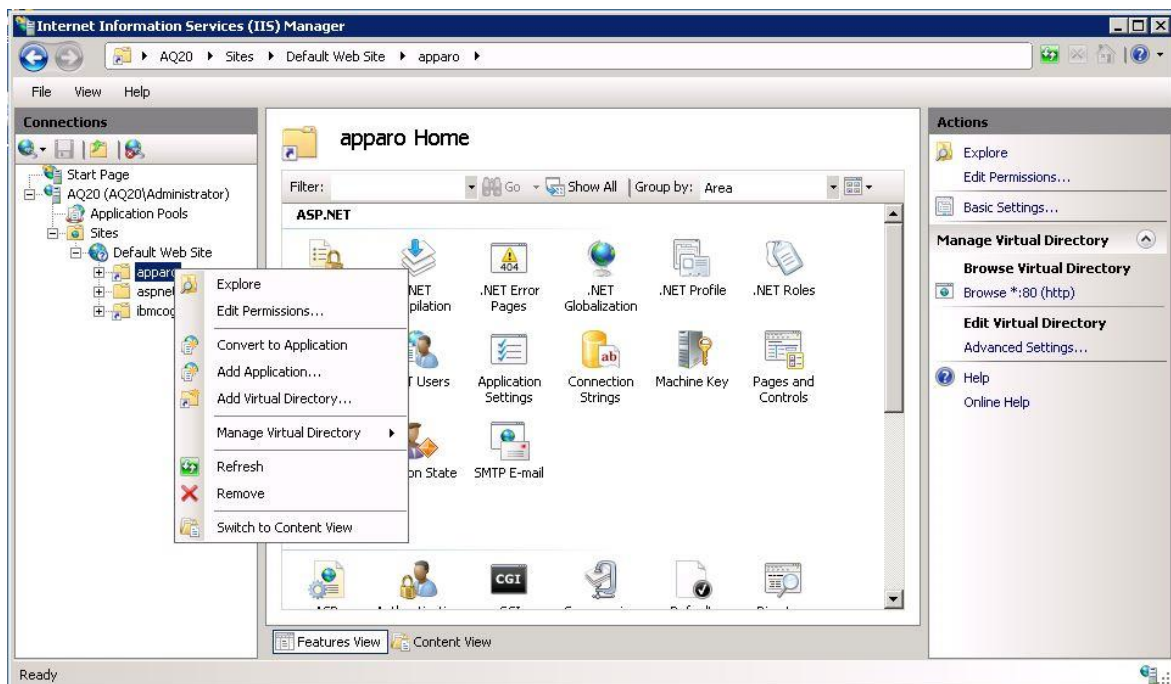
- test if the virtual directory is defined and it points to file directory cgi-bin
- test if the virtual directory has the right to execute
- test if this ISAPI filter is allowed
- restart the IIS

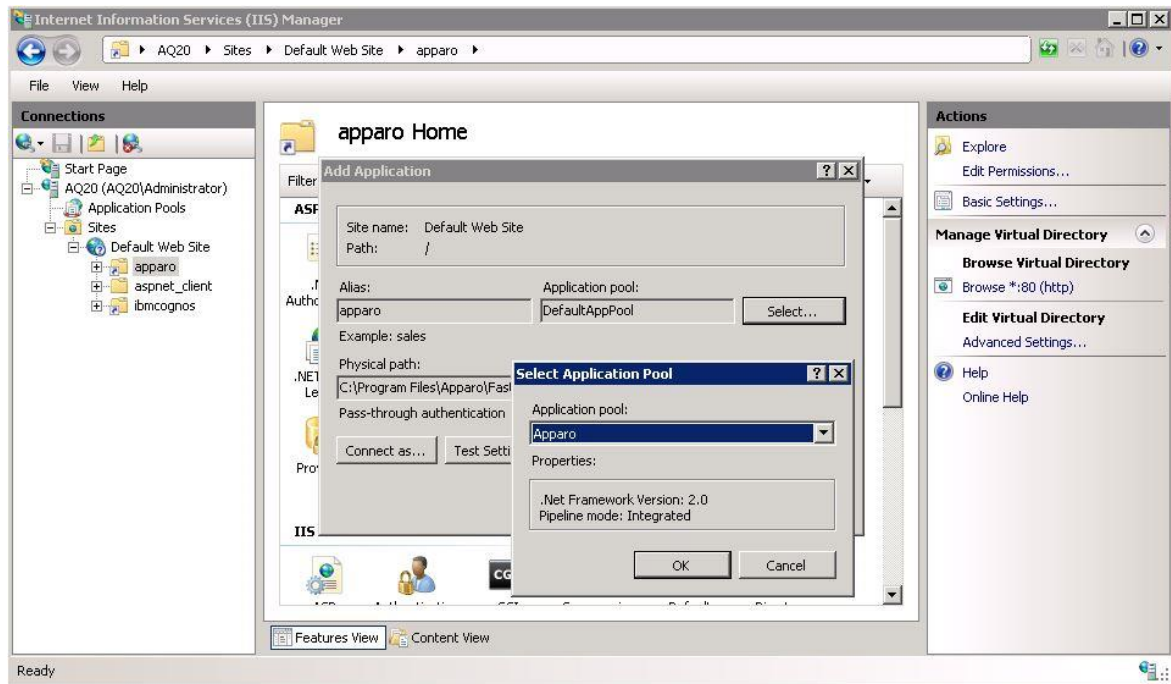
6.4 Using an own Application Pool

If you want to use a separate application pool instead of the “DefaultAppPool” then additional settings are required.

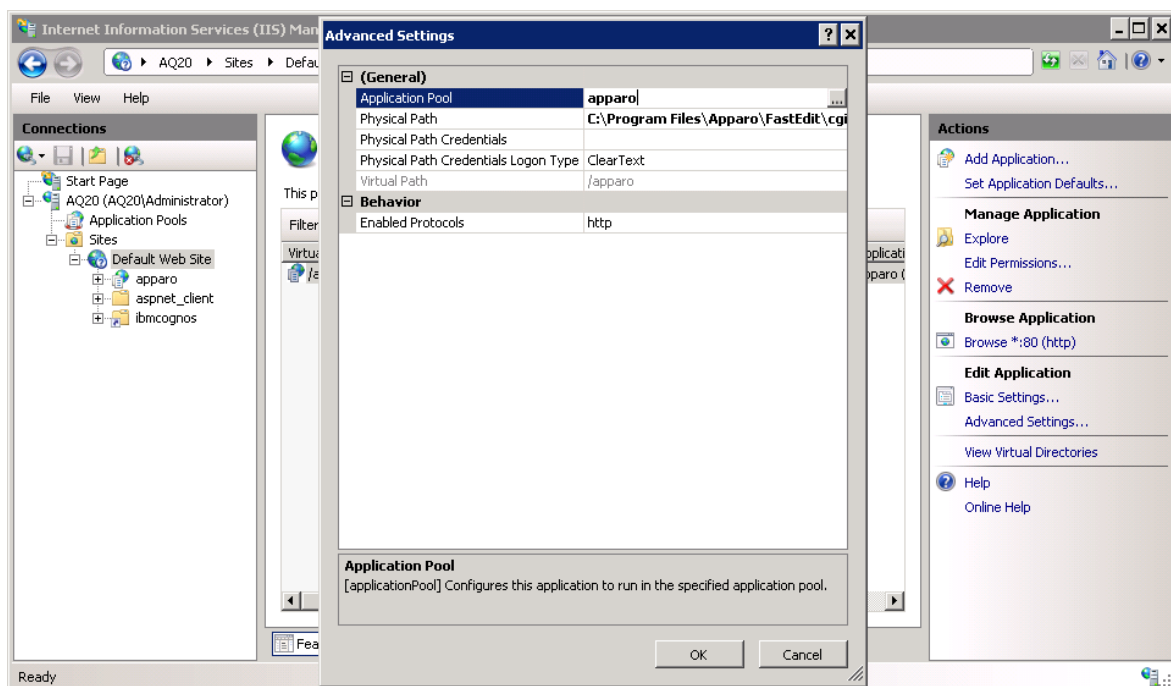


Click with the right mouse button on the virtual directory 'apparo' and select ,Convert to Application'





Then select the desired Application Pool with the “Select ...” button.



The “Default Web Site” must use the same Application Pool (Advanced Settings)

Other applications like Cognos are not affected by the application pool setting of the default web site.

Hint:

When using 64 Bit Windows, please check the settings of the Application Pool regarding the usage of the 32bit version (Advanced Settings -> Enable 32bit Application).

In case it is set to “true”, please use the file IIS_FastEdit_32bit.dll.

6.5 Configuration of the Apache web server

This chapter is describing the configuration of Apache web server 2.4 and higher.

Hint: The configuration of Apparo Fast Edit using Apparo Configuration Manager must be already finished before you can continue.

Following installation steps are necessary:

1. Configure the ajp proxy and the ajp proxy balancer modules, by modifying **httpd.conf** of your Apache web server **httpd.conf**

```
LoadModule proxy_module modules/mod_proxy.so
LoadModule proxy_ajp_module modules/mod_proxy_ajp.so
LoadModule proxy_balancer_module modules/mod_proxy_balancer.so
```

2. Configure the load balancer members under <IfModule mod_proxy.c>:
Open text file „ **http_ajp_proxy_settings.txt** “ that is stored in directory cgi-bin in a text editor.

Replace in httpd.conf the line “<IfModule mod_proxy.c> “ with the content of the text file or use the complete text of http_ajp_proxy_settings.txt. Example – a configuration with 1 node:

```
<IfModule mod_proxy.c>
  ProxyPass /KFE balancer://ApparoFastEdit/KFE
  ProxyPassReverse /KFE balancer://ApparoFastEdit/KFE
  ProxyIOBufferSize 32768
  <Proxy balancer://ApparoFastEdit>
    BalancerMember ajp://aq34:9800 route=s1 loadfactor=1
    ProxySet timeout=300
    ProxySet lbmethod=bytraffic
    ProxySet nofailover=On
    ProxySet stickysession=JSESSIONID|jsessionid
  </Proxy>
  <Location /balancer-manager>
    SetHandler balancer-manager
  </Location>
</IfModule>
```

Save the file `httpd.conf` and restart the web server.

Hint if using RedHat Linux:

If you get an Apache error like:

[error] (13)Permission denied: proxy: AJP: attempt to connect to <servername:9800> failed

Please enter following command:

```
/usr/sbin/setsebool -P httpd_can_network_connect 1
```

Server Time out:

Please check that your Apache web server configuration has the setting

TimeOut 1800

Apparo Fast Edit need much time for importing/exporting/upgrading and Excel import.

Now the installation of the Apparo gateway for Apache web server is finished.

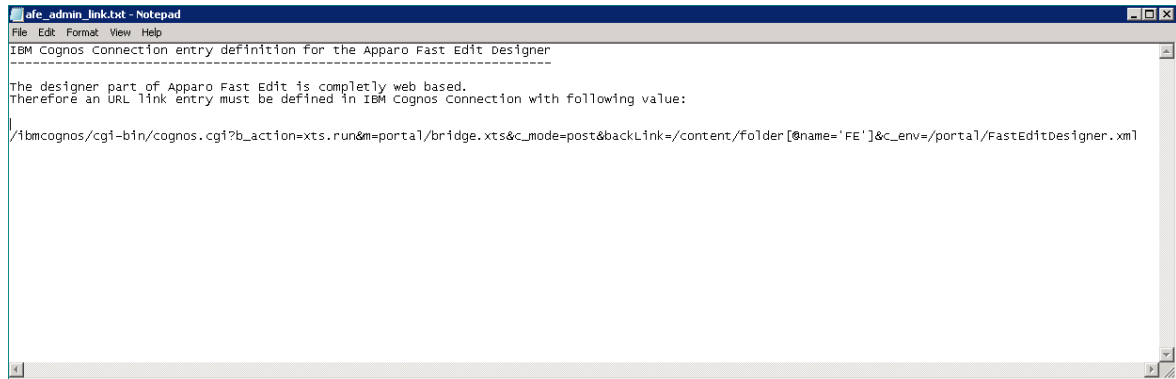
7 Creating the Apparo Designer entry in IBM Cognos Connection

1	Preparation <ul style="list-style-type: none"> • Analysing environment • Creation of a database user for the Apparo repository • Defining the IBM Cognos Connection folder for the Apparo Designer entry • Defining a new IBM Cognos Connection entry for the Apparo Designer
2	Installation of all Apparo application servers
3	Configuration of all Apparo application servers Configuration using the Apparo Configuration Manager
4	Installation of all Apparo gateways
5	Configuration of all Apparo gateway Configuration the web servers and the Apparo gateway using the Apparo Configuration Manager
6	Creating the Apparo Designer entry in IBM Cognos Connection Creating the start entry of Apparo Designer
7	Installing clients

With the Apparo Designer you can create new business cases, new database connection and so on. The Apparo Designer can be started with selecting an entry in IBM Cognos Connection.

Open the Windows **Start menu**, select **Apparo** chapter, select entry “**Designer link**”

Now a text file is opening:

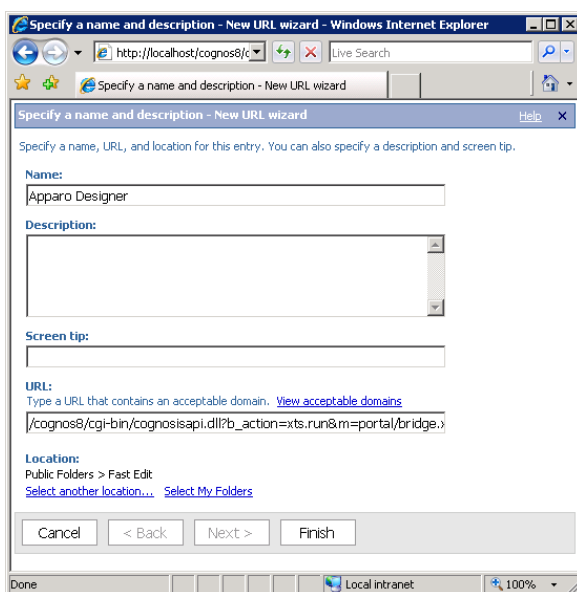


Copy the complete generated URL entry.

Login into IBM Cognos Connection using one of the user names which has design rights for Apparo Designer (default: everybody can open the Apparo Designer).

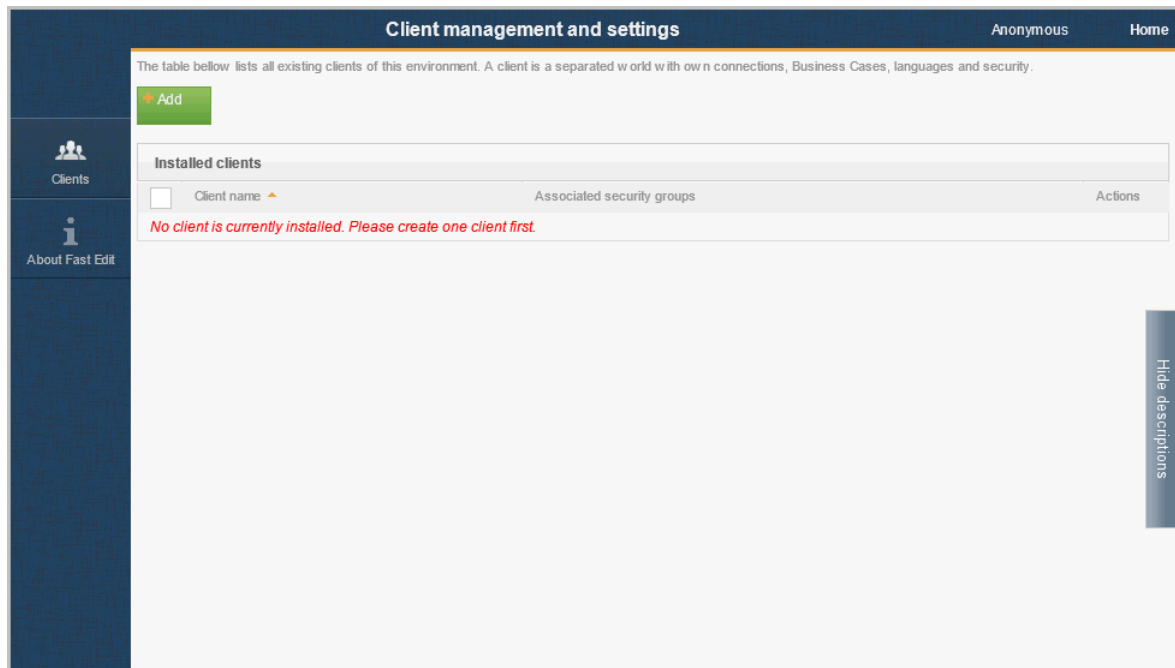
Go to your folder in that that the Apparo Designer entry must be stored to (the same folder like defined in Apparo Configuration Manager):

Create a new link entry and copy & paste the complete URL into the URL property:



Now try to start the Apparo Designer – just **select the “Apparo Designer” entry.**

The following window should open:

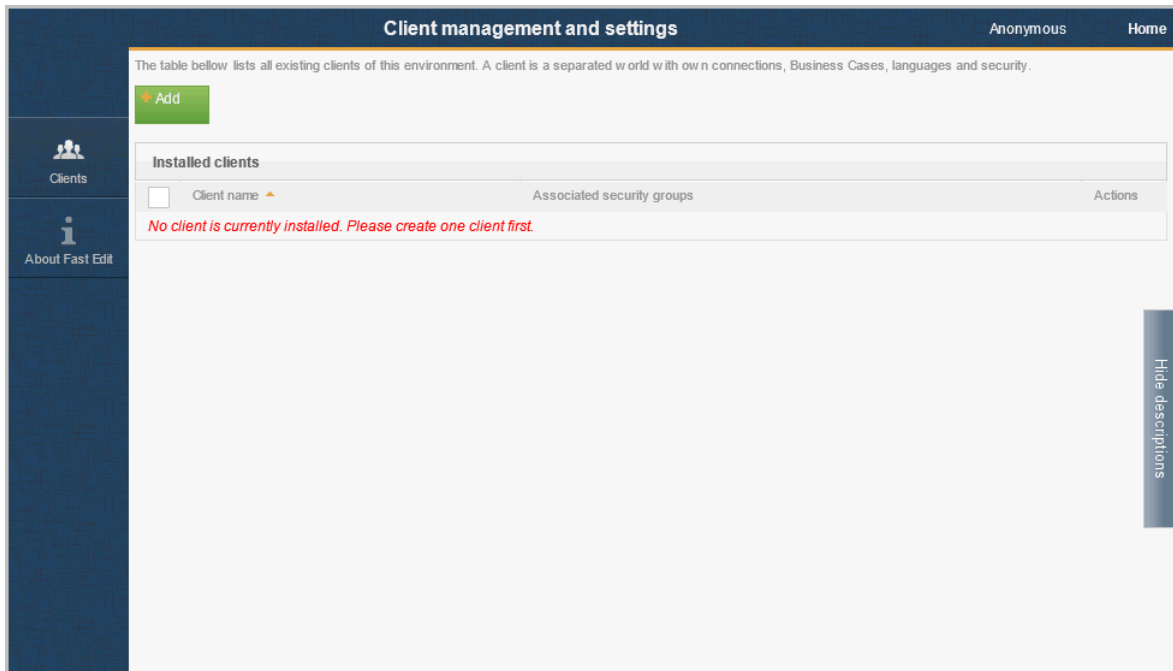


If you get the message “You have insufficient privileges” then you must add the current user into the security group that is necessary to be able to open the Apparo Designer with full access.

8 Installation clients

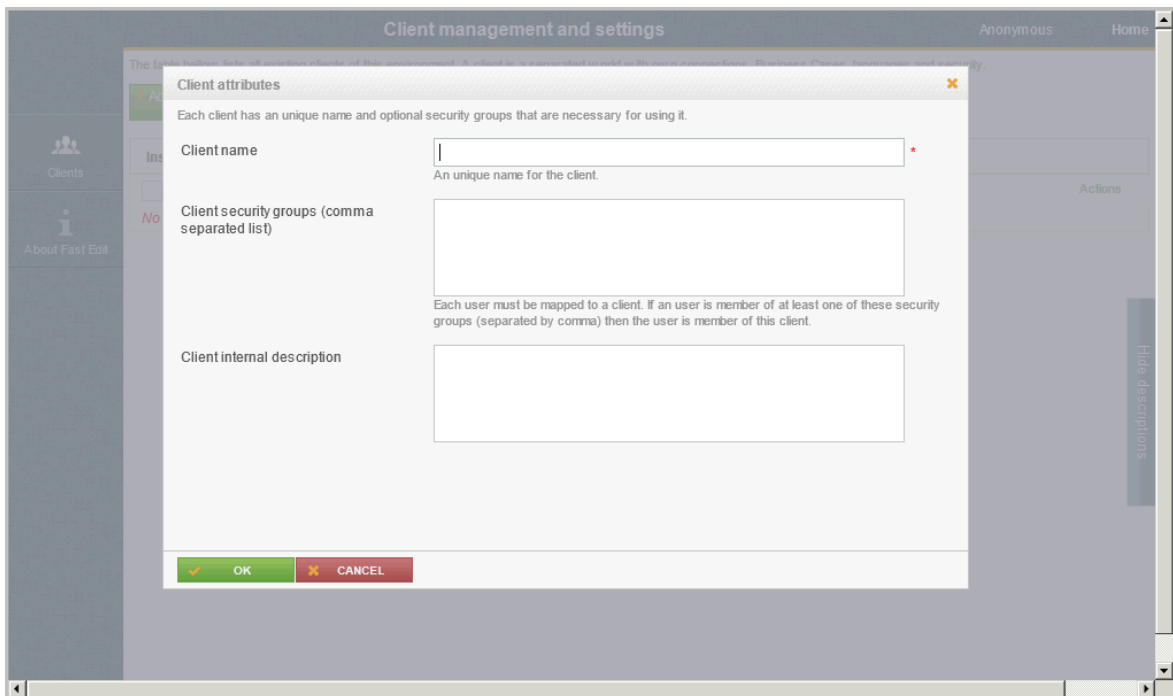
1	Preparation <ul style="list-style-type: none"> • Analysing environment • Creation of a database user for the Apparo repository • Defining the IBM Cognos Connection folder for the Apparo Designer entry • Defining a new IBM Cognos Connection entry for the Apparo Designer
2	Installation of all Apparo application servers
3	Configuration of all Apparo application servers Configuration using the Apparo Configuration Manager
4	Installation of all Apparo gateways
5	Configuration of all Apparo gateway Configuration the web servers and the Apparo gateway using the Apparo Configuration Manager
6	Creating the Apparo Designer entry in IBM Cognos Connection Creating the start entry of Apparo Designer
7	Installing clients

Now it is necessary to install the clients that will be used by users into Apparo Fast Edit.



Please select “Show description” button on the right side to see descriptions for each feature.

Press the “Add” button and create a new client.



Define a short “client name” and press the **OK** button.

Apparo Fast Edit **Client management and settings** Anonymous client1 Home

The table below lists all existing clients of this environment. A client is a separated world with own connections, Business Cases, languages and security.

[Add](#) [Import](#) [Export](#)

Installed clients			
<input type="checkbox"/>	Client name ▲	Associated security groups	Actions
<input type="checkbox"/>	▶ client1		✕

Hide descriptions

Now select the client (here: client1) to get the properties of the client:

Apparo Fast Edit **Settings of client client1** Anonymous client1 Home

Client head General Languages Default numeric & datetime formats Access rights Automatic table/column creation Export formats License key

Client name

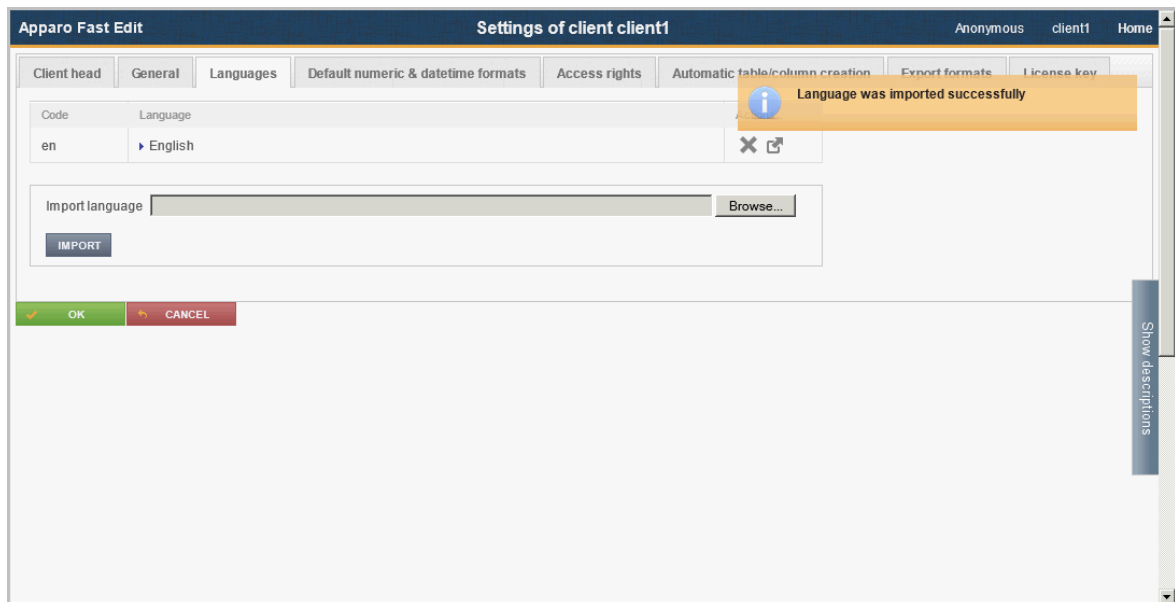
Client security groups (comma separated list)

Client internal description

[OK](#) [CANCEL](#)

Show descriptions

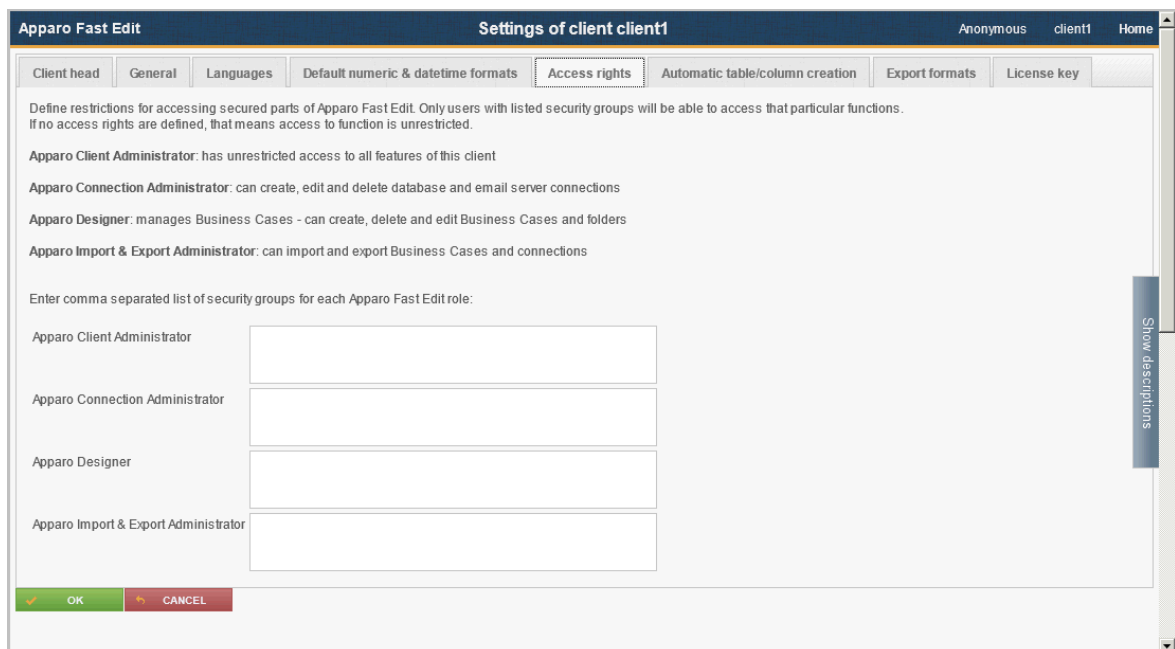
In tab “Languages” you can load all necessary languages for this client:



Please select the right language and press the IMPORT button.

In tab “Access rights” you can define all **security groups for different features**.

These settings are optional.



After that please press the OK for leaving the client settings.

You can find a detail description of client management in “Configuration guide”.

The installation & configuration on serverside is now successfully completed.

Please also read the following chapter 'Browser requirements'.

We recommend to read the document "Training Guide" for the fundamental usage for the first steps.

You can find all documentations and movies in

Windows Start (left corner) / All Programs / Apparo / Documentation

-  Configuration Manager
-  Designer entry
-  Documentation
-  Program version

Movies about Apparo Fast Edit:

<http://movies.apparo.solutions>

9 Configuration of an IBM Cognos BI environment with many dispatchers

If your IBM Cognos BI environment has many parallel dispatchers and you have dispatchers that have no parallel installed Apparo application server then you must copy manually some XML files into Cognos folders:

Copy following files from the file directory **[APPARO_HOME]\FastEdit\etc**

- **FastEditBusinessCase.xml**
- **FastEditDesigner.xml**

into the Cognos dispatcher file directory:

[COGNOS_HOME]\templates\ps\portal

These files are necessary to be able to call external applications like Apparo Fast Edit from the Cognos connection portal.

10 Configuration Manager using command line

It is possible to automate the configuration process of the Configuration Manager.

The complete configuration is stored in the file **configuration.xml**

You can find this file in the [APPARO_HOME]/FastEdit/cm file directory.

Using this command line the configuration can be restored:

```
[APPARO_HOME]\FastEdit\cm\cmc.bat parameter1 parameter2 ...
```

Parameter name	Functionality
-?,--help	Displays this help text
-deploy true/false	Configuration Manager will deploy the setting files
-start true/false	Start Apparo Fast Edit (if no gateway)

11 Import/Export definitions using command line

You can export and import clients (including languages, folder, Business Cases, connections, DB-messages), Business Cases, folder and connections using command scripts.

11.1 Importing definitions

Important: At this time the Apparo Fast Edit application must already run.

The import program is stored in the file directory "import": [APPARO_HOME]\FastEdit\import

Use script **afe-import.bat** (If you start the script without arguments then you see the possible arguments)

-afeUrl <URL>	The Apparo Fast Edit URL address that will export the data. Example: http://localhost:18000/KFE. If you don't use this argument then the export is using the application server of this installation and its installation port.
-clientId <CLIENT_ID>	ID of a client that Business Cases, language definitions, database messages or connection definitions will be imported into.
-f <FILE>	The file that contains the client, Business Case, language definition, database messages or connection definitions.
-h	Displays this help text
-importSecurity <true false>	Business cases and folders may contain a list of user groups defining who can access them. If this option is set to false, such security information will not be imported.
-overwriteBc <true false>	If true then Business Cases from the import file will overwrite already existing Business Cases if their Business Case ID are the same. If false, Business Cases with such conflicting identifiers will be skipped.
-overwriteClient <true false>	If true then clients from the import file will overwrite already existing clients with the same identifiers including client content like Business Cases. If false then clients with such conflicting identifiers will be skipped.
-overwriteConnection <true false>	If true then database and email connections from the import file will overwrite already existing connections with the same names. If false then connections with such conflicting names will be skipped.

All import activities are logged server side in file directory logs, file afeimport.log

Sample: **afe-import.bat -f \etc\definition.xml -clientId Samples**

11.2 Exporting definitions

The export program is stored in the file directory "export": [APPARO_HOME]\FastEdit\export

Use script **afe-export.bat**

If you start the script without arguments then you can see the possible arguments:

-afeUrl <URL>	The Apparo Fast Edit URL address that will export the data. Example: http://localhost:18000/KFE. If you don't use this argument then the export is using the application server of this installation and its installation port.
-bcid <BUSINESS_CASE_ID>	ID of a Business Case you want to export.
-clientId <CLIENT_ID>	ID of a client you either want to export or an ID of a client the target object (Business Case, folder or connection) belongs to.
-dbc <CONN_NAME>	Name of a database connection you want to export.
-emailc <CONN_NAME>	Name of an email connection you want to export.
-f <FILEPATH>	Filename & path where to write the exported XML.
-folderPath <PATH>	Path of a folder you want to export. It should start with a slash character '/' which should also be used as a path separator.
-h	Displays this help text

All export activities are logged server side in file directory logs, file afeexport.log

Sample: **afe-export.bat -f \etc\definition.xml -clientId DemoClient**

12 Browser requirements

12.1 Supported browsers and versions

Microsoft Internet Explorer 8 (not recommended, execution is slow)
 Microsoft Internet Explorer 9
 Microsoft Internet Explorer 10
 Microsoft Internet Explorer 11

Hint: Compatibility mode for Internet Explorer 8 must be disabled.

Mozilla Firefox (current version)
 Google Chrome (current version)
 Apple Safari (current version)

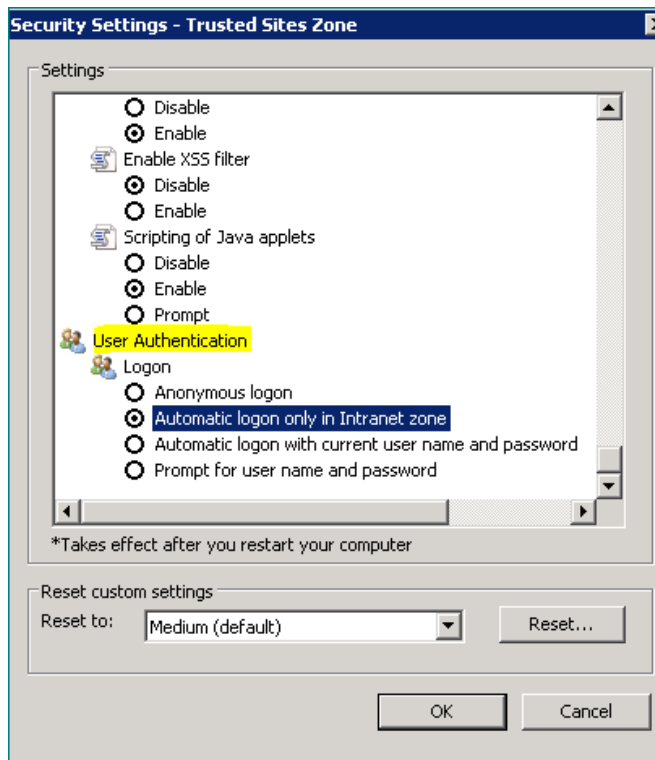
12.2 Supported operating systems for client browsers

Microsoft Windows

12.3 Additional settings for Microsoft Internet Explorer only

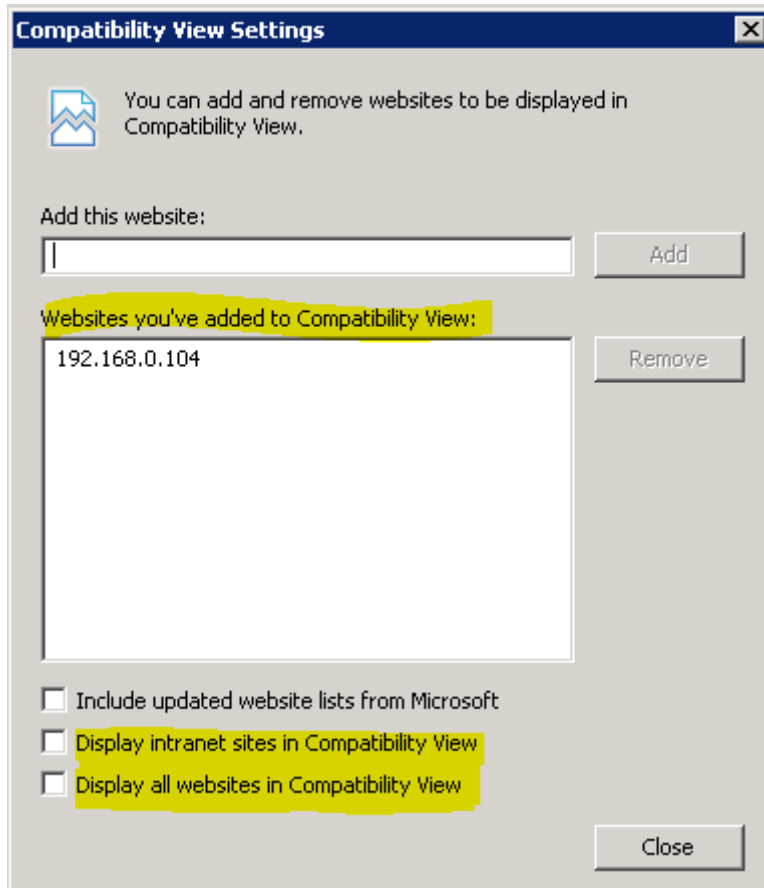
- Domain name of Apparo Fast Edit web server must be in trusted sites
- “about:blank” must be in trusted sites

Settings for Single Sign On (SSO) for standalone versions of Apparo Fast Edit:



Hint: Apparo Fast Edit is not supporting Internet Explorer 7.

Therefore the settings “Display intranet in Compatibility View” and “Display all websites in Compatibility View” must be **disabled**.



Solution: Placing these domains into the “Websites you’ve added to Compatibility View” because in this case Apparo Fast Edit can disable the Compatibility View automatically.

12.4 Additional settings for all browsers

- Popup blocker must be **disabled**
- File download (Excel files) must be allowed

13 Support

If you need support then please write an eMail to:

support@apparo.solutions