

SSL Installation Guide

Apparo Fast Edit



1	<i>What is a secured environment</i>	3
2	<i>Necessary steps</i>	4
2.1	Installation of an SSL certificate for the web server	4
2.2	Changing the IBM Cognos Gateway	4
2.3	Changes in Apparo Configuration Manager	5
2.4	Example URL	6
3	<i>Support</i>	7

1 What is a secured environment

Communication between browser and web server can be secured using **HTTPS**.

Normally it is not necessary to secure the internal server communication (default port 9300).

In this example the server has the name “aq12” and the internal communication is using port 9300.

2 Necessary steps

2.1 Installation of an SSL certificate for the web server

2.2 Changing the IBM Cognos Gateway

The screenshot shows the Cognos Configuration - aq12 application window. The 'Environment - Group Properties' dialog is open, displaying a table of configuration properties. The 'Gateway URI' property is highlighted, showing its value as 'https://aq12:443/cognos8/cgi-bin/cognos.cgi'. Other properties include file locations, dispatcher URIs, and font settings.

Name	Value
Deployment files location	../deployment
Data files location	../data
* Map files location	../maps
Temporary files location	../temp
Encrypt temporary files?	False
* Format specification file location	../configuration/cogformat.xml
Sort buffer size in MB	4
Gateway Settings	
* Gateway URI	https://aq12:443/cognos8/cgi-bin/cognos.cgi
Gateway namespace	
Allow namespace override?	False
* Dispatcher URIs for gateway	http://aq12:9300/p2pd/servlet/dispatch/ext
* Controller URI for gateway	http://aq12:80/cognos8/controllerServer
Dispatcher Settings	
* External dispatcher URI	http://aq12:9300/p2pd/servlet/dispatch
* Internal dispatcher URI	http://aq12:9300/p2pd/servlet/dispatch
Dispatcher password	*****
Other URI Settings	
* Dispatcher URI for external applications	http://aq12:9300/p2pd/servlet/dispatch
* Content Manager URIs	http://aq12:9300/p2pd/servlet
Font Settings	
* Physical fonts locations	../bin/fonts;C:\WINDOWS\FONTS
Physical fonts map	<click the edit button>
Fonts to embed (batch report service)	<click the edit button>
Fonts to embed (report service)	<click the edit button>

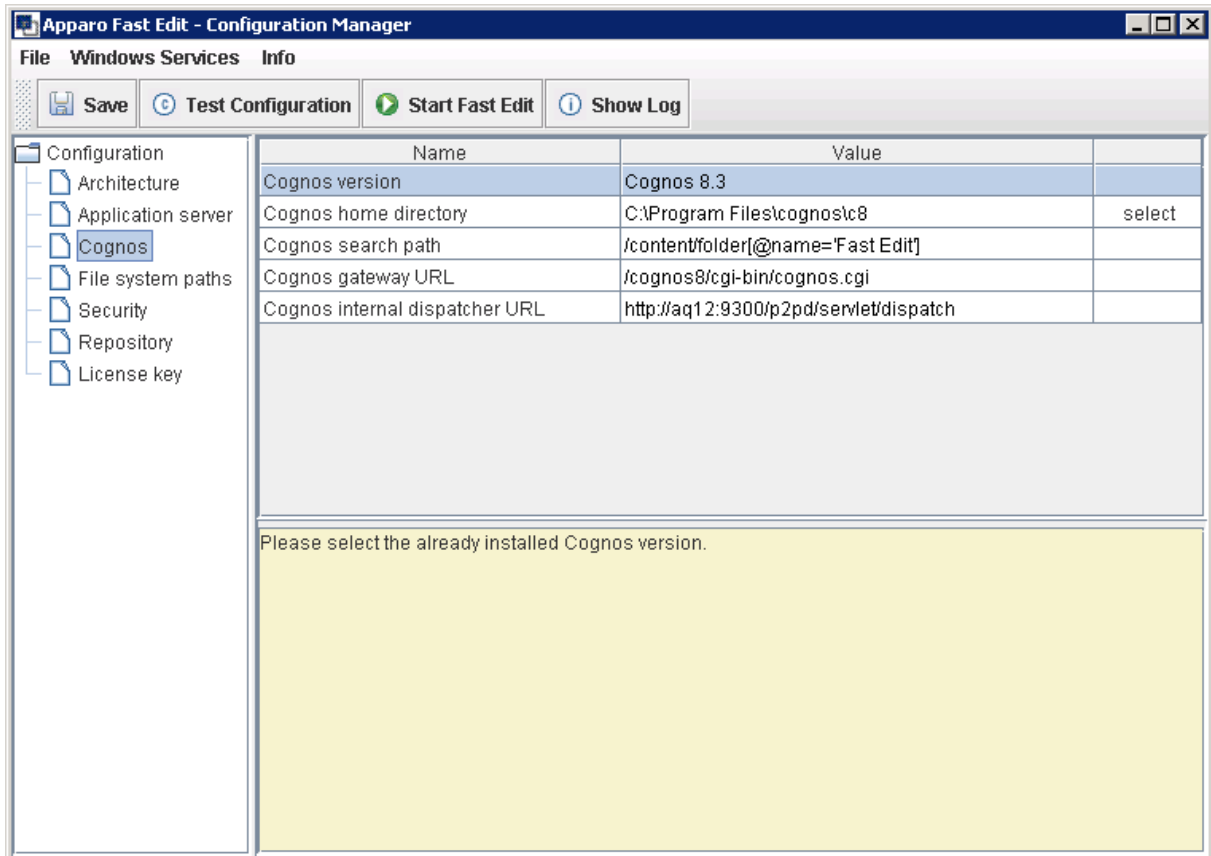
Defines a group of properties that specifies gateway information.
Use this group of properties to set the information associated with the gateway.

Checking if the Cognos 8 service is running...

The setting „Gateway URI“ must be changed for using „**https**“ and default port **443**.

All other URIs like dispatcher URIs **remain unchanged**.

2.3 Changes in Apparo Configuration Manager



There are **no changes in Apparo Configuration Manager necessary** because in the setting “Cognos gateway URL” there is no protocol defined. Therefore Apparo Fast Edit is using the same protocol like IBM Cognos.

The “Cognos internal dispatcher URL” is using http because the communication between IBM Cognos and Apparo Fast Edit is completely server side only – there is no unsecured network between both applications.

2.4 Example URL

Example for calling the Apparo Designer (Cognos 8.0 – 8.3)

```
/cognos8/cgi-bin/cognos.cgi?b_action=xts.run&m=portal/bridge.xts&c_env=/portal/env.xml&c_mode=post&c_cmd=/KFE/pages/businessCaseList.jsf&backLink=/content/folder[@name='Fast Edit']
```

Example for calling the Apparo Designer (starting with Cognos 8.4)

```
/cognos8/cgi-bin/cognos.cgi?b_action=xts.run&m=portal/bridge.xts&c_env=/portal/FastEditDesigner.xml&c_mode=post&backLink=/content/folder[@name='Fast Edit']
```

3 Support

If you need support please write an email to:

support@apparo.info

You can open the **Apparo support homepage** with

<http://support.apparo.info>